

ASTEROID

New Features and Enhancements in ASTEROID 5



ASTEROID Support:

Email

AsteroidHelp@roymorgan.com

Table of Contents

New Features and Enhancements in ASTEROID 5	3
1. ASTEROID User Interface.....	3
2. Grid H view	3
3. New Charting Features	3
4. Improvement in speed	4
Frequently Asked Questions.....	4
1. Where do I find Settings now?	4
2. How do I run a Dictionary check?.....	5
3. How do I extract RID information?.....	5
4. How do I change the details (font, etc) in a text box or balloon on a chart?	5
5. Will ASTEROID 5 run on my current (old) databases or do I need a new database?.....	6
6. Does ASTEROID 5 run on XP or do I need Vista or W7?	6
7. Do I need Office 2007 or Office 2010?.....	6
8. Do I need a new computer?	6
9. What has been fixed?.....	6

New Features and Enhancements in ASTEROID 5

NOTE: Installing ASTEROID 5 will upgrade any recent versions already installed. To re-install an earlier version, ASTEROID 5 should first be removed.

1. ASTEROID User Interface

We have changed the ASTEROID user interface to greatly improve aesthetics and work flow processes within the software.

- Look and feel of Microsoft 2007
- Fluent Ribbon bar
 - Tasks, settings, etc grouped more effectively and efficiently to provide more intuitive and logical workflows

2. Grid H view

ASTEROID now provides two Grid view options to display tabulation data; Grid-V, the traditional table display used by ASTEROID (the default view), or Grid-H, an inverted view of the same data presented horizontally.

3. New Charting Features

Several new features have been introduced to enhance the graphical and technical aspects:

- **Quickly detect trends** – by positioning the mouse in any chart element other elements are dimmed out allowing you to focus attention on that specific series and its attributes, and easily identify trends and other important elements in your data.
- **Dynamic filtering** – similar to above, by positioning the mouse over a chart axis, ASTEROID will activate a dynamic filter that highlights the value and the chart points that plot above that specific value. As you continue to move the mouse along the axis ASTEROID will reapply the filter highlighting the appropriate data, allowing you to clearly see relationships in your chart.
- **Colour palettes** – ASTEROID now gives you the flexibility to customise your presentation by supplying you a choice of predefined palettes. You can select from the standard Roy Morgan palette or alternatively from a number of pre-defined industry palettes.
- **Charting Templates** – ASTEROID Charting Templates gives you the power to customize the way you visualize your data. You can use one of the Industry-proven Roy Morgan standard templates or create your own. Either way, you will save time in producing presentation ready market research analysis charts out of the box.

PLEASE NOTE: Charts are now only able to be saved as .bmp files.

4. Improvement in speed

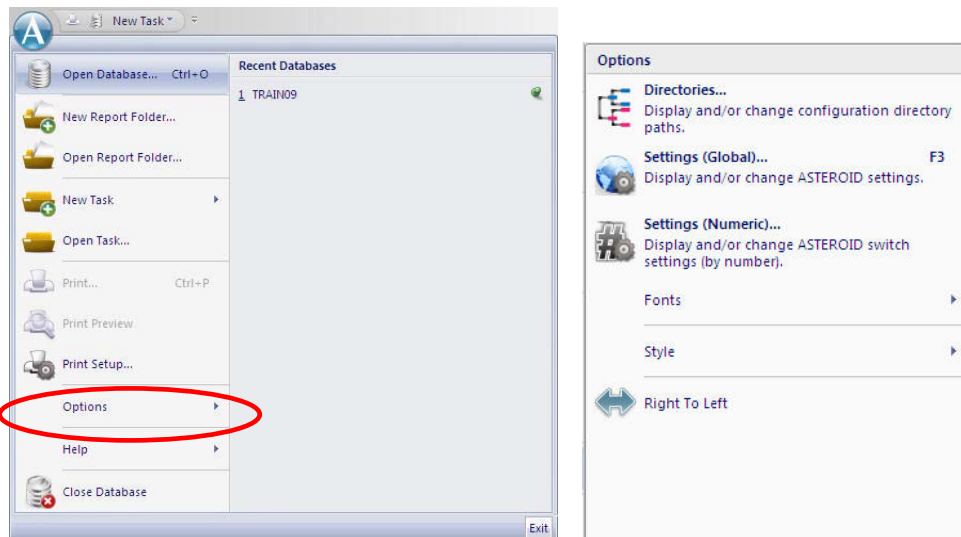
This version consolidates the improvements in speed made in previous versions with the multi-threading initiative.

For speed critical projects, performance can now be improved substantially by building the database in 'Pegasus' format.

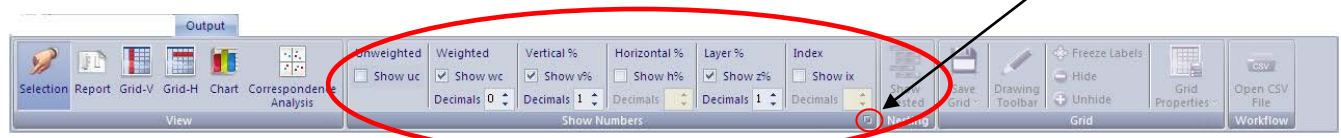
Frequently Asked Questions

1. Where do I find Settings now?

You can now access Settings (Global) and (Numeric) via the Application button, Options.



Settings (Show Numbers) is no longer a side bar. These settings are now located on the Output tab of the Ribbon bar. You can open the full Settings window by clicking on the small arrow in the bottom left corner, or by going to the Settings Task button on the Task ribbon tab.



Settings (Task) is no longer a tool bar. These settings are now located on the Output tab of the Ribbon bar.



2. How do I run a Dictionary check?

Private Dictionary is now located on the Home tab of the Ribbon bar. Use the down arrow to access the various functions of the Dictionary.

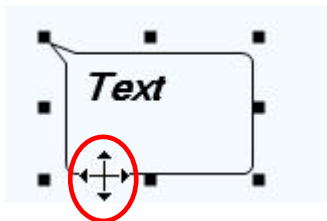


3. How do I extract RID information?

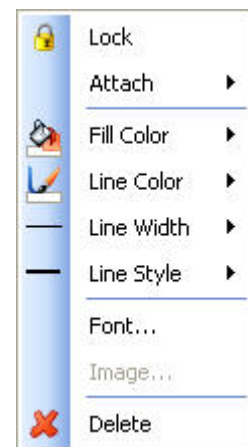
After creating an RID example and finding out the sample size you must click the Run button to run the RID task, which will prompt for an output filename and do the export.

4. How do I change the details (font, etc) in a text box or balloon on a chart?

If you wish to add a Text Box or Balloon to a chart, click on the relevant icon on the Annotate Toolbar and draw a square on the chart, then type directly into this text box.



To make changes within the Text Box (or Balloon) you need to ensure you have the cursor placed exactly on a border of the Text Box so that the 4-directional arrow appears (as per diagram at left) then right-click and select from the option list presented (at right):

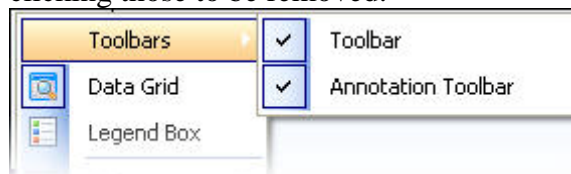


It may sometimes appear, after making changes, that there are then two Text Boxes or Balloons, but moving to another area of the chart will correct this.



Note: If the cursor is not placed exactly on the border line, you may be presented with a different option list (at left) which will actually change the font of the point labels, data grid, etc, so you must make sure you have the correct option list to choose from.

If you wish to increase the area available for displaying the chart, remove one or both of the toolbars by selecting Toolbars from the top of the list at left and clicking those to be removed.



PLEASE NOTE: Charts are now only able to be saved as .bmp files.

5. Will ASTEROID 5 run on my current (old) databases or do I need a new database?

You do not need a new database – ASTEROID 5 will operate with your current database.

6. Does ASTEROID 5 run on XP or do I need Vista or W7?

ASTEROID 5 will run on XP, Vista or W7.

7. Do I need Office 2007 or Office 2010?

No, you do not need to upgrade Office. ASTEROID 5 will operate with (export to/from, etc) Office 2003.

8. Do I need a new computer?

The answer to this question depends entirely on which of the new benefits of ASTEROID you are wishing to gain the most advantage from, which depends on the age of the computer you are now using. ASTEROID 5 will run on any computer that ASTEROID 4 runs on but you can get significant performance improvements on large databases by using a multi-core computer.

9. What has been fixed?

1. In MediaPLANNER tasks the number of print media allowed was 50. For some clients this was limiting.
→The print media limit has increased to 120 per schedule.
2. When nesting items, where the base to the branch under which the items are nested the indicator for vertical percentages was n%.
→To clearly indicate the nested items are based to the branch, the nested vertical percentages have been changed to nv%.

Please continue to provide feedback so that we are able to better meet your needs.

AsteroidHelp@roymorgan.com