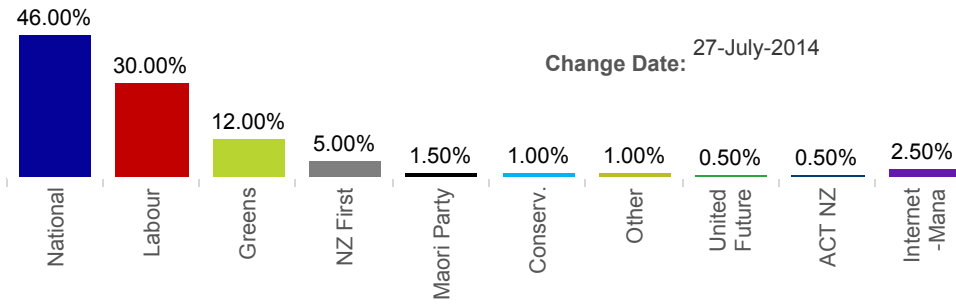


New Zealand National Poll



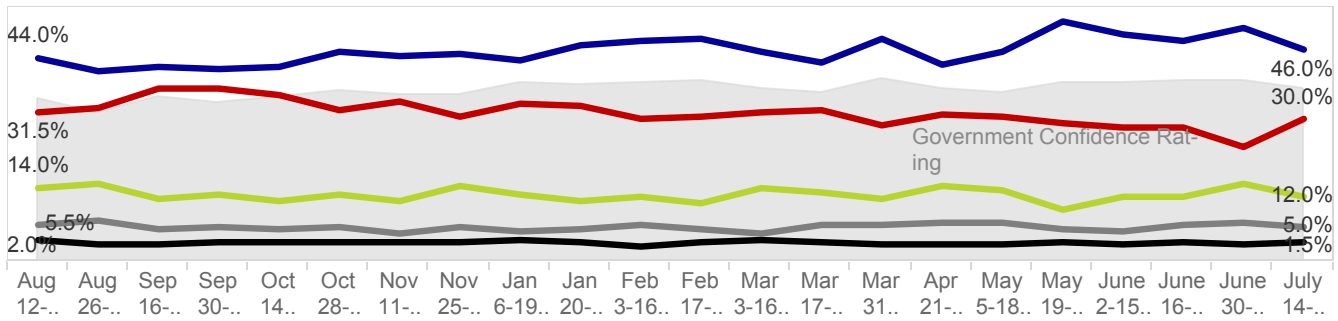
Latest Party Voting Intention for 27-July-2014



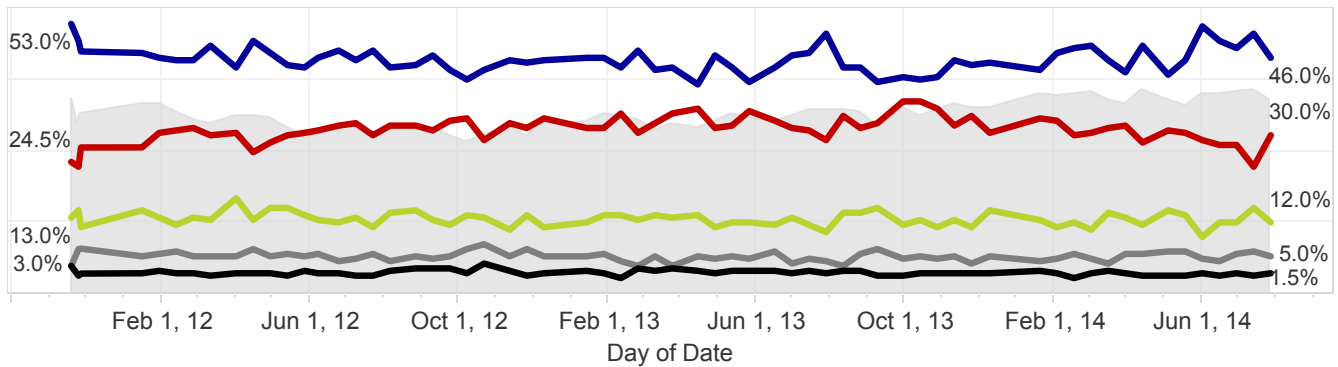
Latest Roy Morgan New Zealand Government Confidence Rating:
Confidence Rating:
 Change (-7.5pts)
135.0

Grey shaded area on graphs

Recent Voting Intention: Since resignation of David Shearer as Labour Leader (August 22, 2013)



New Zealand Party Voting Intention since last New Zealand Election (November 26, 2011)



Long-term New Zealand Party Voting Intention (2002-2014)

