

Discover your *edge*

Friday, 13 June 2014

Roy Morgan Research 'closer to reality' than the ABS according to a majority of Australians

A clear majority of Australians (55%, down 3% since June 2013*) say the Roy Morgan May unemployment estimate (9.7%) is 'closer to reality' than the far lower official ABS May unemployment number (5.8%); 32% (up 11%) believe the ABS number while a further 13% (down 8%) can't say.

Analysis by Gender & Age

Analysis by gender shows women (62%, up 1%) are more likely than men (48%, down 7%) to say the Roy Morgan unemployment figure is 'closer to reality'. More men (40%, up 14%) than women (25%, up 9%) say the ABS unemployment figure is 'closer to reality'.

Analysis by age groups shows people of all ages are more likely to believe the Roy Morgan figures - 53% of 18-24yr olds believe the Roy Morgan unemployment figure is 'closer to reality', 50% of 25-34yr olds, 60% of 35-49yr olds, 58% of 50-64yr olds and 51% of 65+yr olds.

Analysis by Voting Intention – shows change of Government changes perceptions

Analysis by voting intention shows a clear difference between supporters of the two major parties and also huge changes from a year ago when there was an ALP Government.

The improvement in belief in the ABS unemployment estimate has been entirely driven by L-NP supporters. Now 46% (up 31% from a year ago during the Rudd Government) of L-NP supporters say the ABS unemployment estimate is 'closer to reality' compared to 39% (down 29%) that say the Roy Morgan unemployment estimate is 'closer to reality'. **This is a huge shift in only a year and underlines how supporters can comprehensively favour their own side of politics.**

ALP supporters have also changed their views – although not to the same extent. Now 62% (up 17%) of ALP supporters say the Roy Morgan unemployment estimate is 'closer to reality' compared to 28% (down 4%) that believe the ABS unemployment estimate. Greens supporters have seen a similar change with 71% (up 27%) saying the Roy Morgan unemployment figures are 'closer to reality' compared to only 20% (down 3%) that say the ABS figures are. A clear majority of Palmer United Party supporters (70%) agree with the Roy Morgan employment estimate.

Gary Morgan says:

"A clear majority of Australians (55%, down 3% since June 2013) say the [Roy Morgan unemployment estimate \(9.7% in May\)](#) is 'closer to reality' compared to 32% (up 11%) that say the official ABS unemployment estimate (5.8% in May) is 'closer to reality'.

*"Analysis of this research conducted under an ALP Government and an L-NP Government shows clearly that **supporters of the party in Government** are more likely to believe official Government statistics such as the ABS unemployment figure.*

"The Coalition Government has missed a unique opportunity to use the real unemployment figures to drive the changes needed to reduce unemployment and under-employment by changing work practices – it's impossible to argue major Government policy changes relating to taxes and expenditure are needed when the ABS says unemployment is under 6%!"

This special telephone Morgan Poll was conducted over the last three nights (June 10-12, 2014) with an Australia-wide cross-section of 637 Australians aged 18+.

Australians were asked: "The ABS Unemployment rate in April/May was 5.8%. The Roy Morgan estimate for May was 9.7%. Which do you believe is closer to reality?"

Telephone Morgan Poll								
	Interviewing Dates Electors		Voting Intention					
	June 2013	June 10-12, 2014	L-NP	ALP	Greens	Palmer	Ind./Other	Can't say#
Roy Morgan	58	55	39	62	71	70	65	71
ABS	21	33	46	28	20	20	23	8
Can't say	21	12	15	10	9	10	12	21
TOTAL	100	100	100	100	100	100	100	100

#Figures for some these demographics must be treated with caution as there are under 50 interviews.

Telephone Morgan Poll									
	Australians 14+		Gender		Age				
	June 2013	June 10-12, 2014	Men	Women	18-24	25-34	35-49	50-64	65+
Roy Morgan	58	55	48	62	53	50	60	58	51
ABS	21	32	40	25	35	38	29	28	38
Can't say	21	13	12	13	12	12	11	14	11
TOTAL	100	100	100	100	100	100	100	100	100

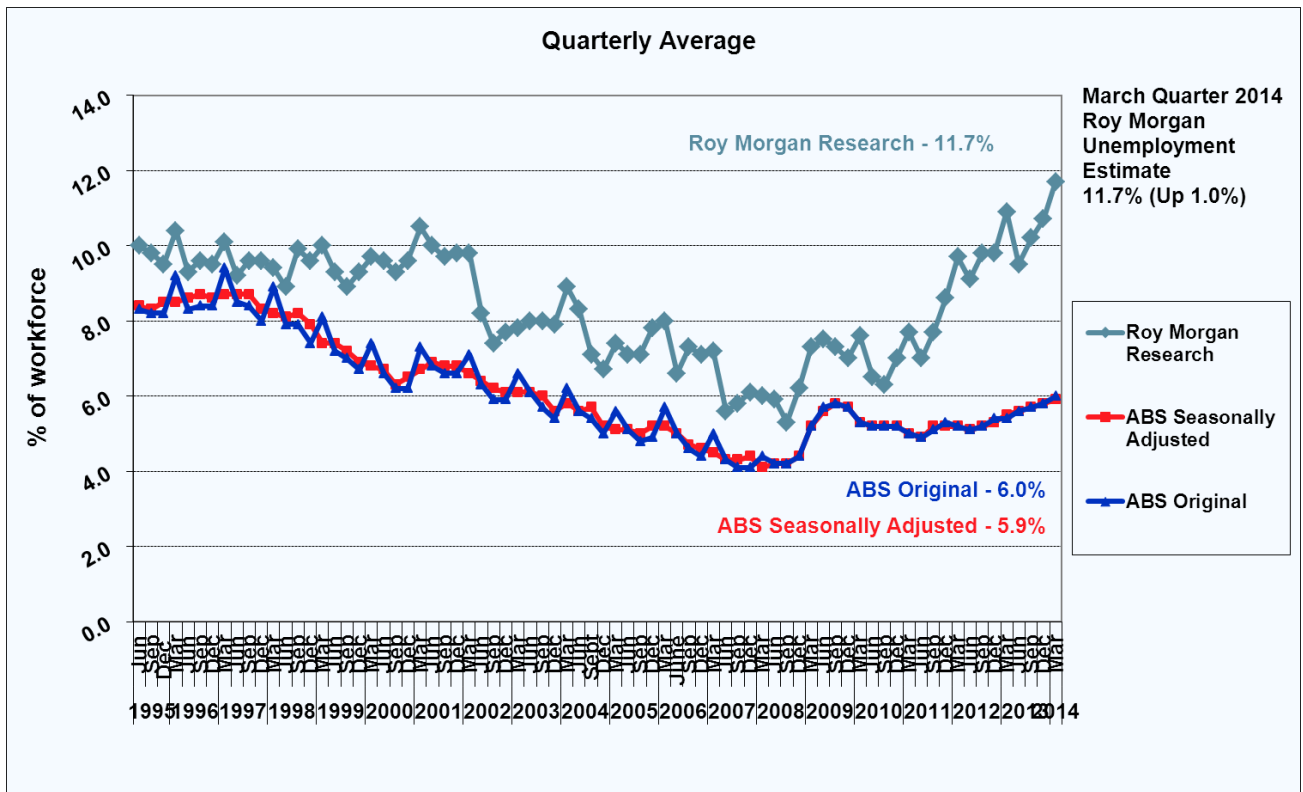
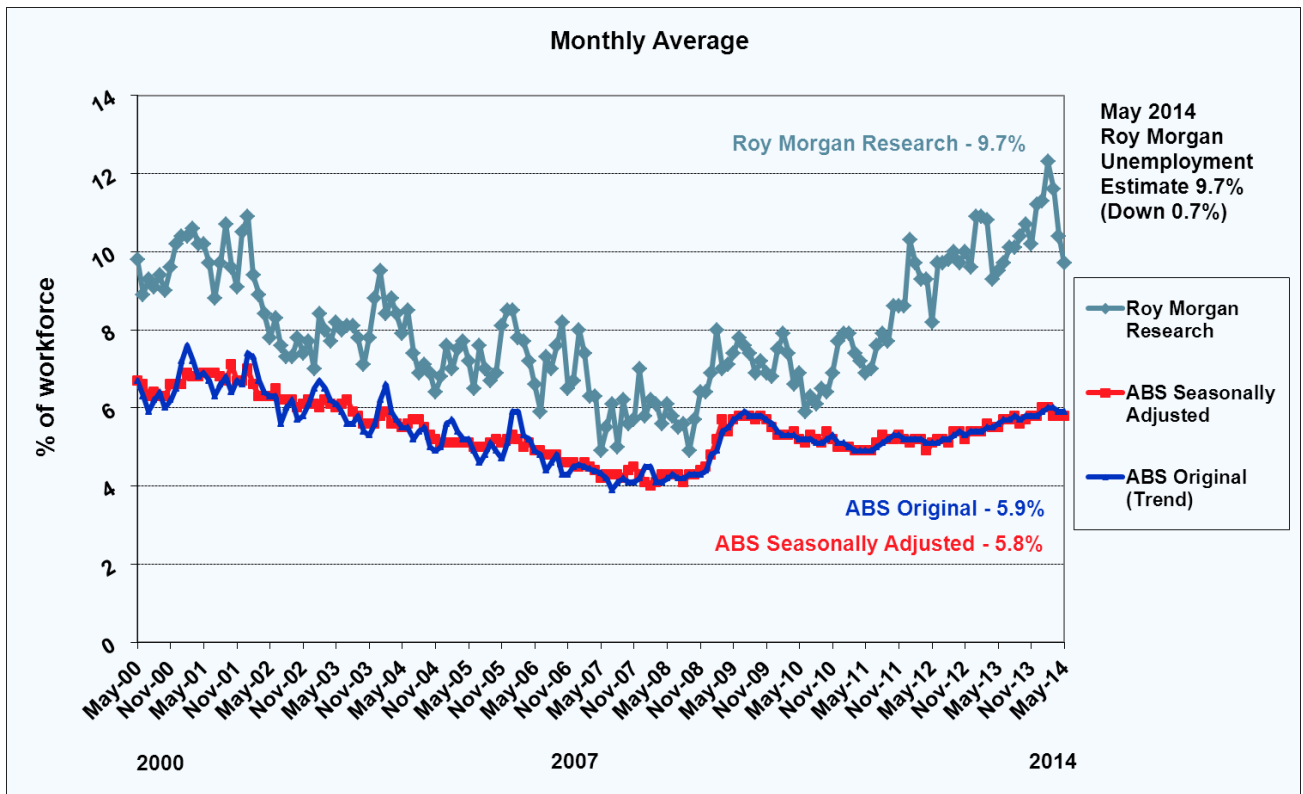
Telephone Morgan Poll								
	Australians 14+		State					
	June 2013	June 10-12, 2014	NSW	VIC	QLD	WA	SA	TAS
Roy Morgan	58	55	53	63	51	50	49	77
ABS	21	32	37	26	35	36	27	17
Can't say	21	13	10	11	14	14	24	6
TOTAL	100	100	100	100	100	100	100	100

*In June 2013 the Roy Morgan unemployment figure was 9.7% and the ABS unemployment figure was 5.7% - i.e. about the same as now.

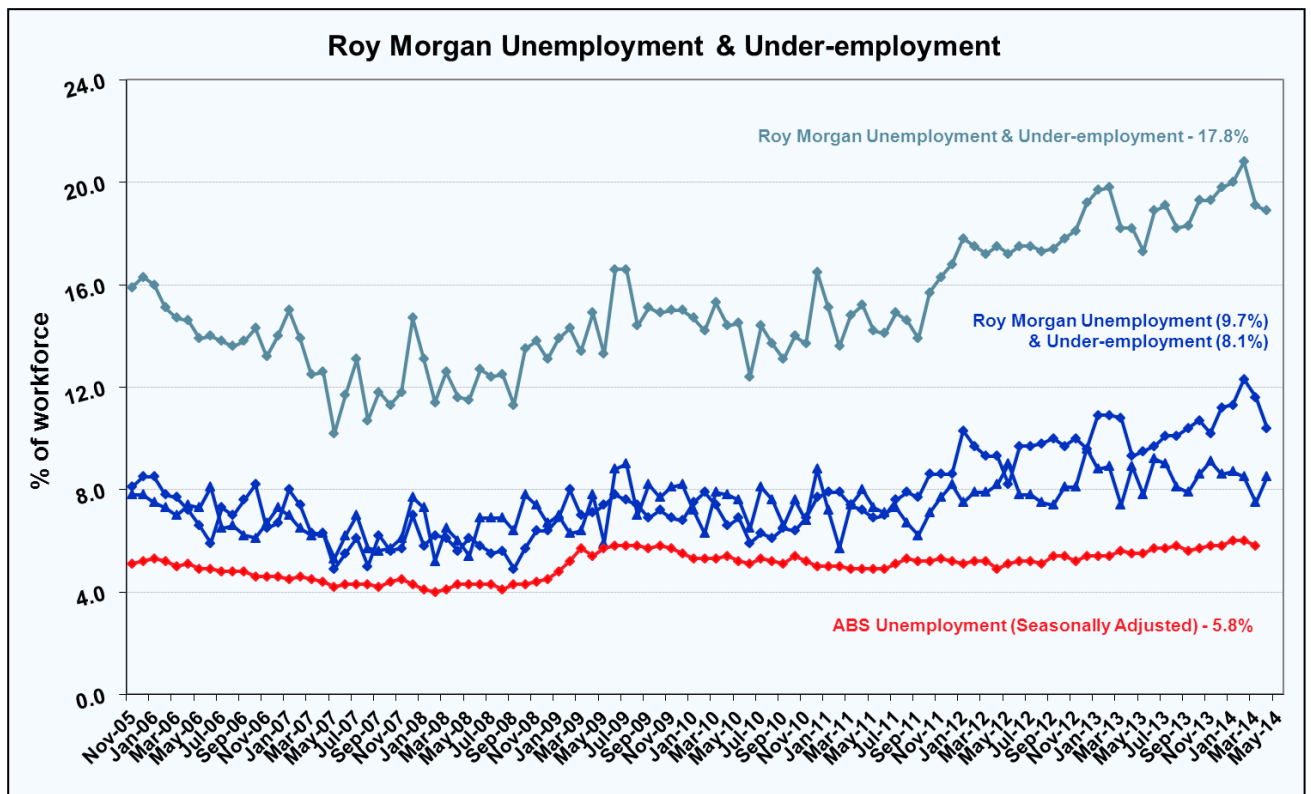
For further information:

Contact	Office	Mobile
Gary Morgan:	+61 3 9224 5213	+61 411 129 094
Michele Levine:	+61 3 9224 5215	+61 411 129 093

ROY MORGAN RESEARCH VS. ABS UNEMPLOYMENT ESTIMATES



FOR IMMEDIATE RELEASE



**ROY MORGAN MEASURES REAL UNEMPLOYMENT IN AUSTRALIA
NOT THE 'PERCEPTION' OF UNEMPLOYMENT – JUNE 8, 2012**

<http://www.roymorgan.com/~media/Files/Papers/2012/20120603.pdf>

The Roy Morgan Unemployment estimate is obtained by surveying an Australia-wide cross section by face-to-face interviews. A person is classified as unemployed if they are looking for work, no matter when.

The results are not seasonally adjusted and provide an accurate measure of monthly unemployment estimates in Australia.

The Australian Bureau of Statistics Unemployment estimates are obtained by mostly telephone interviews. Households selected for the ABS Survey are interviewed each month for eight months, with one-eighth of the sample being replaced each month. The first interview is conducted face-to-face. Subsequent interviews are then conducted by telephone.

The ABS classifies a person as unemployed if, when surveyed, they have been actively looking for work in the four weeks up to the end of the reference week and if they were available for work in the reference week.

The Australian Bureau of Statistics Unemployment estimates are also seasonally adjusted.

For these reasons the Australian Bureau of Statistics Unemployment estimates are different from the Roy Morgan Unemployment estimate. Gary Morgan's concerns regarding the ABS Unemployment estimate is clearly outlined in his letter to the Australian Financial Review, which was not published.

<http://www.roymorgan.com/news/papers/2003/20030801>