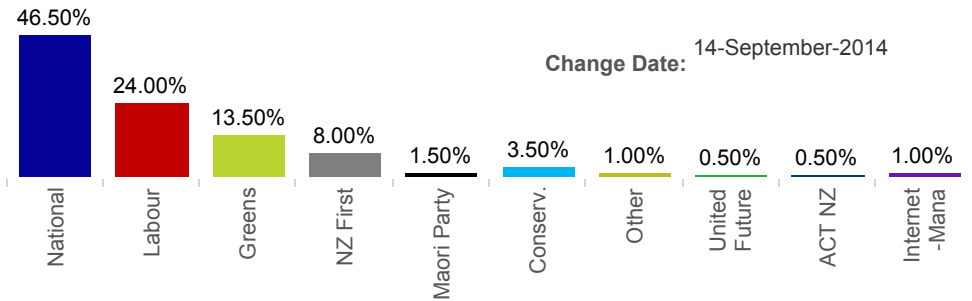


# New Zealand National Poll



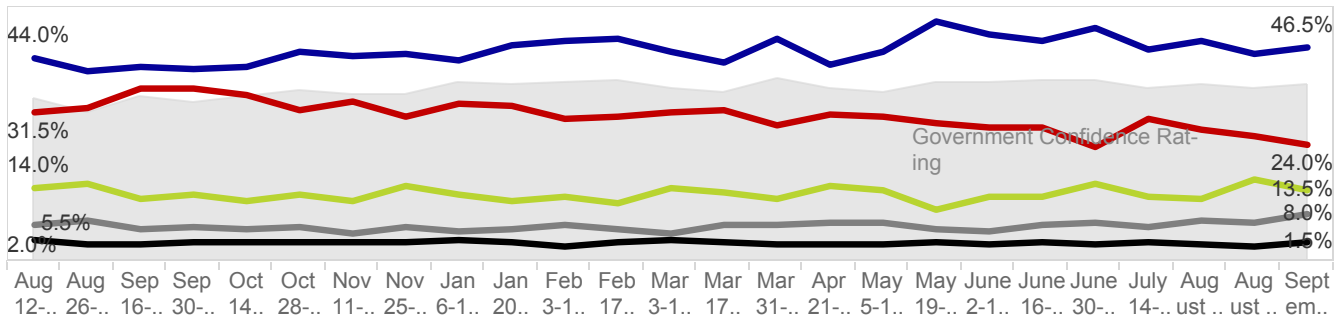
## Latest Party Voting Intention for 14-September-2014



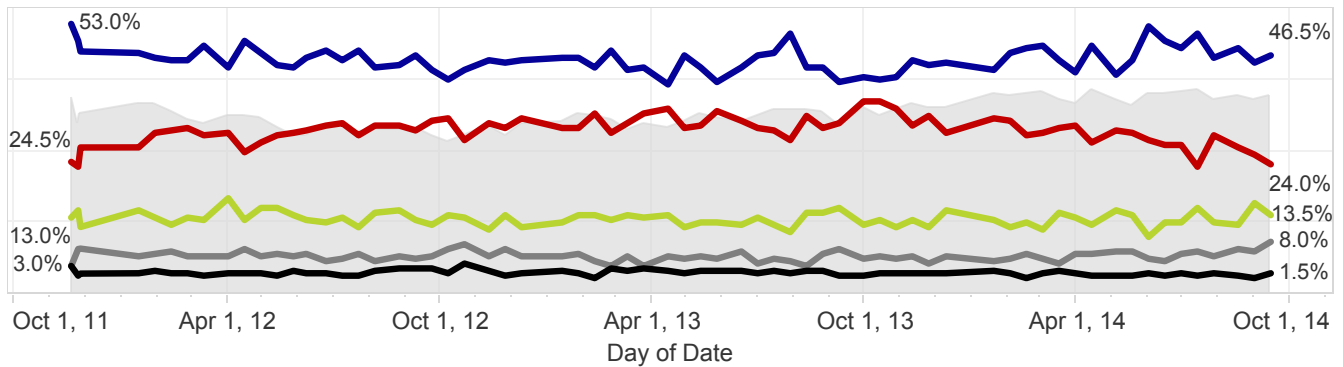
**Latest Roy Morgan New Zealand Government Confidence Rating:**  
**Change (+2.0pts)**  
**138.0**

Grey shaded area on graphs

## Recent Voting Intention: Since resignation of David Shearer as Labour Leader (August 22, 2013)



## New Zealand Party Voting Intention since last New Zealand Election (November 26, 2011)



## Long-term New Zealand Party Voting Intention (2002-2014)

