

Wednesday, 24 June 2015

National Government support down to 49.5% as New Zealand growth slows to 0.2% in March Quarter – slowest in two years

During June support for National was down 4.5% to 49.5% after the 2015 NZ Budget. However, despite the fall the National-led Government has a large lead over a potential Labour/Greens alliance with their support at 39% (up 3%), according to the latest Roy Morgan New Zealand Poll.

If a National Election were held now the latest New Zealand Roy Morgan Poll shows that National would win and be able to govern in their own right.

Support for National supporters the Maori Party was unchanged at 1% while support is unchanged for both Act NZ 1% and United Future 0%.

Support has increased for all three Parliamentary Opposition parties: Labour's support is now at 26% (up 0.5%), Greens 13% (up 2.5%) and NZ First 6.5% (up 0.5%). For the parties outside Parliament the Conservative Party of NZ is 1% (unchanged) while the Internet-Mana Party alliance is at 0% (unchanged) and support for Independent/ Others is 2% (up 1%).

The latest NZ Roy Morgan Government Confidence Rating has fallen slightly to 135.5pts (down 1pt). There are now 62.5% (down 0.5%) of NZ electors saying NZ is 'heading in the right direction' compared to 27% (up 0.5%) that say NZ is 'heading in the wrong direction'. NZ Government Confidence is substantially higher than in Australia – [Australian Government Confidence last week was at 98.5pts.](#)

Gary Morgan, Executive Chairman, Roy Morgan Research, says:

"National lost support in June – now at 49.5% (down 4.5%), following New Zealand's slowest GDP growth (0.2%) in two years during the March Quarter 2015. Anticipating the growth slowdown the Reserve Bank of New Zealand cut interest rates to 3.25% in June – the first cut in interest rates for over four years since March 2011. However, despite the drop, National retains a very strong lead over a potential Labour/ Greens alliance 39% (up 3%)."

"The slowdown in the New Zealand economy in recent months is evident when one looks at the [ANZ-Roy Morgan New Zealand Consumer Confidence Rating – now 119.9 in June](#). Consumer Confidence has now fallen in the past two months from 128.8 in April to 123.9 in May and now down to 119.9 in June (down 8.9pts (6.9%) in the past two months). In addition, the New Zealand Dollar has fallen from 77.2 US cents in late April to 68.6 US cents today – a fall of 8.6 cents (11.1%)."

"However, despite the worries, there is still good news with New Zealand Government Confidence at 135.5 in June with 62.5% of New Zealand electors saying New Zealand is 'heading in the right direction' far higher than 'across the ditch' in Australia where [Government Confidence is 98.5](#) with only 40% of Australians saying Australia is 'heading in the right direction'."

Electors were asked: "If a New Zealand Election were held today which party would receive your party vote?" This latest New Zealand Roy Morgan Poll on voting intention was conducted by telephone – both landline and mobile telephone, with a NZ wide cross-section of 905 electors in June 2015. Of all electors surveyed 5% (unchanged) didn't name a party.

For further information:

Contact	Office	Mobile
Gary Morgan:	+61 3 9224 5213	+61 411 129 094
Michele Levine:	+61 3 9224 5215	+61 411 129 093

Margin of Error

The margin of error to be allowed for in any estimate depends mainly on the number of interviews on which it is based. The following table gives indications of the likely range within which estimates would be 95% likely to fall, expressed as the number of percentage points above or below the actual estimate. The figures are approximate and for general guidance only, and assume a simple random sample. Allowance for design effects (such as stratification and weighting) should be made as appropriate.

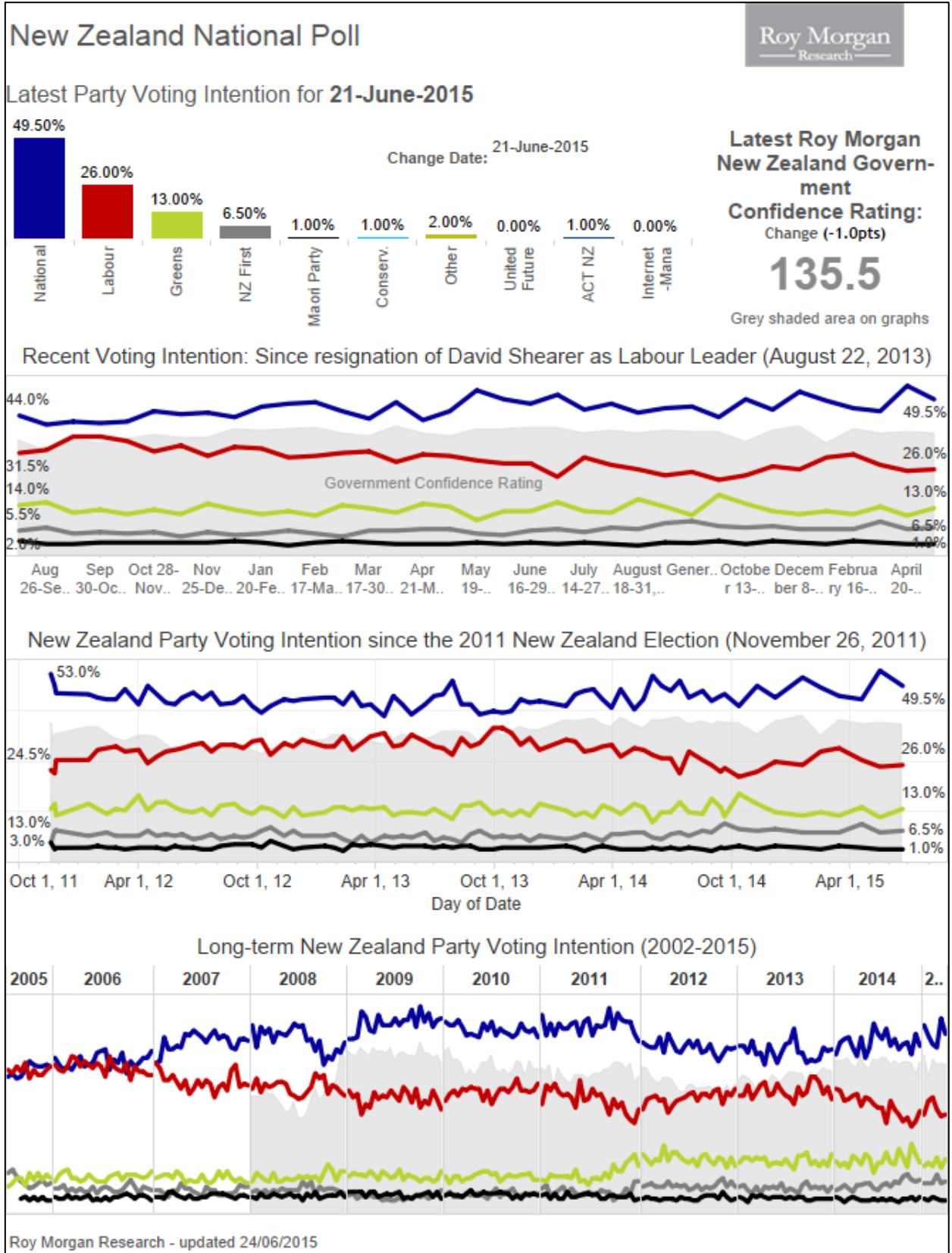
Sample Size	Percentage Estimate			
	40%-60%	25% or 75%	10% or 90%	5% or 95%
1,000	±3.2	±2.7	±1.9	±1.4
1,500	±2.6	±2.2	±1.5	±1.1

Roy Morgan New Zealand Interactive Voting Charts

These interactive charts allow a deeper look at voting patterns in New Zealand over varying timeframes and provide election observers with the ability to pinpoint key turning points for the political parties.

[View interactive New Zealand Election charts here.](#)

Purchase the latest Roy Morgan [New Zealand Electorate Profiles.](#)



Voting Intention Summary

The following table compares the latest New Zealand Roy Morgan Polls on Voting Intention with the result from the September 20, 2014 General Election:

PARTY VOTE ELECTIONS	National %	Labour %	Green Party* %	NZ First %	Maori Party* %	ACT NZ %	United Future* %	Conserva tives* %	Mana Party* %	Internet* %	Other %
October 12, 1996*	33.87	28.19	10.10	13.35	n/a	6.10	0.88	n/a	n/a	n/a	7.51
November 27, 1999	30.50	38.74	5.16	4.26	n/a	7.04	1.66	n/a	n/a	n/a	12.64
July 27, 2002	20.93	41.26	7.00	10.38	n/a	7.14	6.69	n/a	n/a	n/a	6.60
September 17, 2005	39.10	41.10	5.30	5.72	2.12	1.51	2.67	n/a	n/a	n/a	2.48
November 8, 2008	44.93	33.99	6.72	4.07	2.39	3.65	0.87	n/a	n/a	n/a	3.38
November 26, 2011	47.31	27.48	11.06	6.59	1.43	1.07	0.60	2.65	1.08	n/a	0.73
September 20, 2014	47.04	25.13	10.70	8.66	1.32	0.69	0.22	3.97	1.42	n/a	0.85
ROY MORGAN POLL											
Sep 29-Oct 12, 2014	43.5	22.5	17.5	7	2	0.5	0.5	5	1	^	0.5
Oct 27-Nov 9, 2014	49.5	24	14.5	6.5	1	0.5	^	2	0.5	^	1.5
Nov 24-Dec 7, 2014	46	27	12	7	2	1.5	^	2.5	1	^	1
January 5-18, 2015	52	26	11	6	1.5	1	^	2	^	^	0.5
February 2-15, 2015	49	30	12	6	1	^	^	1.5	^	^	0.5
March 2-15, 2015	46.5	31	11	6	2	1	^	1.5	^	^	1
April 6-19, 2015	45.5	27.5	13.5	8.5	1.5	1	^	1	^	^	1.5
May 4-17, 2015	54	25.5	10.5	6	1	1	^	1	^	^	1
June 8-21, 2015	49.5	26	13	6.5	1	1	^	1	^	^	2

^ Result less than 0.5%. *The 1996 Election was the first New Zealand Election contested via MMP (Mixed Member Proportional). At the 1996 Election the Greens Party contested as part of the "Alliance" political grouping with four other political parties. *United Future was formed via a merger in 2000 between the United Party and the Future New Zealand Party, which separately contested the 1999 Election. *The Maori Party was launched in July 2004; The Mana Party was launched in July 2011. The Conservative Party was launched in August 2011. The Internet Party was launched in January 2014. The Internet Party & Mana Party announced an alliance in May 2014 that jointly contested the 2014 NZ Election. The combined result for the Internet-Mana Party Alliance is included in the Mana Party result (1.42%).

Two-Party Preferred: National Party-led Government vs. Parliamentary Opposition Parties

The following table compares the latest New Zealand Roy Morgan Polls on Voting Intention with the result from the September 20, 2014 General Election:

	National Party-led Government*	Parliamentary Opposition Parties#
Election, November 8, 2008	51.84	48.16
Election, November 26, 2011	50.41	46.21
Election, September 20, 2014	49.27	44.49
ROY MORGAN POLL		
September 29 – October 12, 2014	46.5	47
October 27 – November 9, 2014	51	45
November 24 – December 7, 2014	49.5	46
January 5-18, 2015	54.5	43
February 2-15, 2015	50	48
March 2-15, 2015	49.5	48
April 6-19, 2015	48	49.5
May 4-7, 2015	56	42
June 8-21, 2015	51.5	45.5

*National-led Government: National Party, Maori Party, ACT NZ, United Future; #Opposition Parties: Labour Party, Green Party, NZ First. Parties not represented: Conservative Party, Internet Party, Mana Party & Other not included as they are not represented in Parliament.

Finding No. 6300 taken from Computer Report No. 2421

The Roy Morgan Poll is conducted by the **ONLY** Australian and NZ member of the Gallup International Association.

No other public opinion poll taken in Australia or New Zealand has this qualification.

NEW ZEALAND: HEADING IN "RIGHT" OR "WRONG" DIRECTION?

Electors were asked: "Generally speaking, do you feel that things in New Zealand are heading in the right direction or would you say things are seriously heading in the wrong direction?"

NZ Roy Morgan Government Confidence Rating: Interviewing Dates (National Party Govt.)

	July 1-14, <u>2013</u> %	July 15-28, <u>2013</u> %	July 29-Aug 11, <u>2013</u> %	Aug 12-25, <u>2013</u> %	Aug 26-Sep 8, <u>2013</u> %	Sep 16-29, <u>2013</u> %	Sep 30-Oct 13, <u>2013</u> %	Oct 14-27, <u>2013</u> %
Right direction	58	58.5	58	58	52.5	59	55	57.5
Wrong direction	29.5	30	30	30.5	35.5	29.5	31	28.5
Roy Morgan GCR#	128.5	128.5	128	127.5	117	129.5	124	129
Can't say	12.5	11.5	12	11.5	12	11.5	14	14
TOTAL	100	100	100	100	100	100	100	100

NZ Roy Morgan Government Confidence Rating: Interviewing Dates (National Party Govt.)

	Oct 28-Nov 10, <u>2013</u> %	Nov 11-24, <u>2013</u> %	Nov 25-Dec 8, <u>2013</u> %	Jan 6-19, <u>2014</u> %	Jan 20-Feb 2, <u>2014</u> %	Feb 3-16, <u>2014</u> %	Feb 17-Mar 2, <u>2014</u> %
Right direction	61	59	58.5	63	63.5	63.5	65
Wrong direction	27.5	29	28.5	23.5	24.5	23.5	23.5
Roy Morgan GCR#	133.5	130	130	139.5	139	140	141.5
Can't say	11.5	12	13	13.5	12	13	11.5
TOTAL	100	100	100	100	100	100	100

NZ Roy Morgan Government Confidence Rating: Interviewing Dates (National Party Govt.)

	Mar 3-16, <u>2014</u> %	Mar 17-30, <u>2014</u> %	Mar 31-Apr 13, <u>2014</u> %	Apr 21-May 4, <u>2014</u> %	May 5-18, <u>2014</u> %	May 19-June 1, <u>2014</u> %	June 2-15, <u>2014</u> %
Right direction	61	61	65	62	60	64.5	63.5
Wrong direction	25.5	28	22	26.5	28	24	24
Roy Morgan GCR#	135.5	133	143	135.5	132	140.5	139.5
Can't say	13.5	11	13	11.5	12	11.5	12.5
TOTAL	100	100	100	100	100	100	100

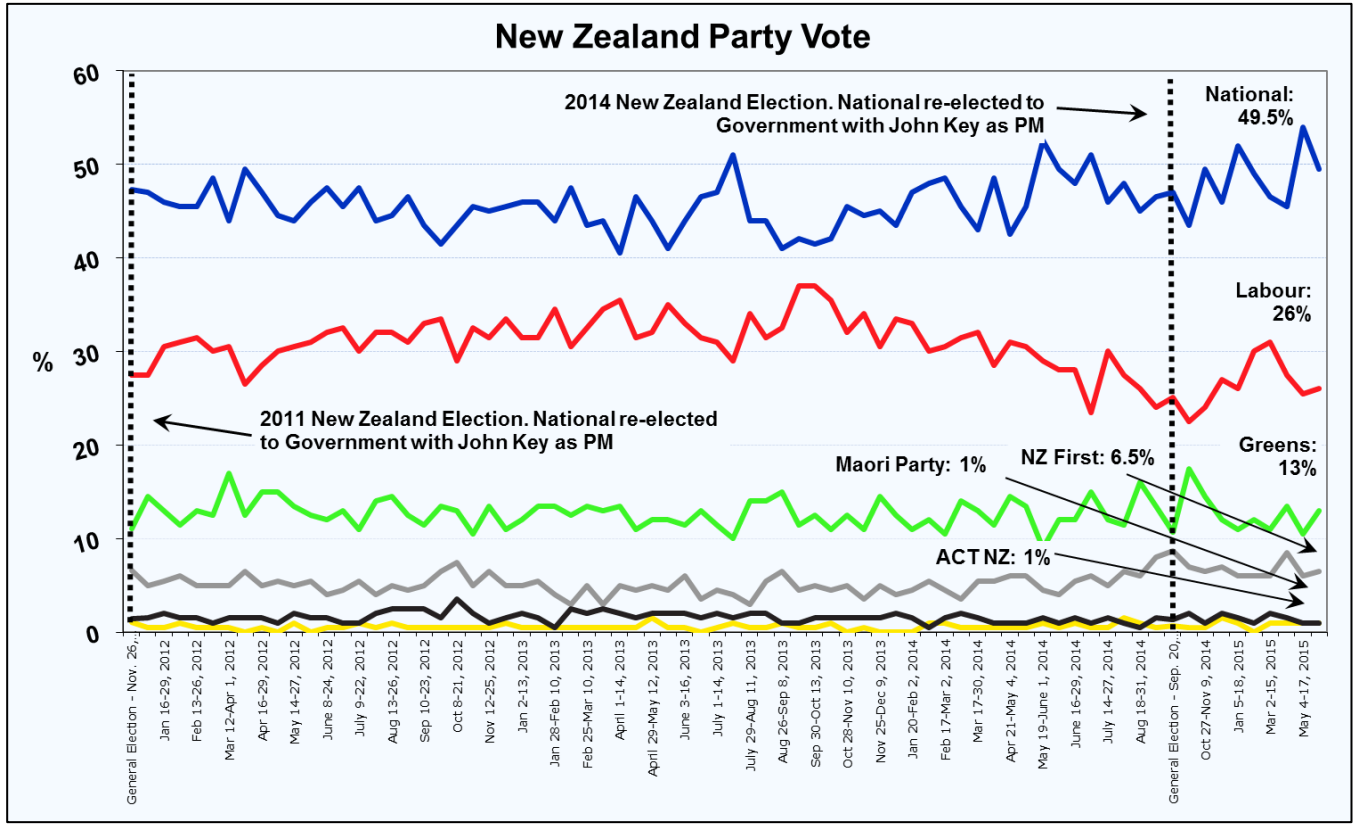
NZ Roy Morgan Government Confidence Rating: Interviewing Dates (National Party Govt.)

	June 16-29, <u>2014</u> %	June 30-July 13, <u>2014</u> %	July 14-27, <u>2014</u> %	Aug 4-17, <u>2014</u> %	Aug 18-31, <u>2014</u> %	Sep 1-14, <u>2014</u> %	Sep 29-Oct 12, <u>2014</u> %	Oct 27-Nov 9, <u>2014</u> %
Right direction	65	65.5	60	63.5	61	62	61.5	56
Wrong direction	23.5	23	25	24.5	25	24	24.5	30
Roy Morgan GCR#	141.5	142.5	135	139	136	138	137	126
Can't say	11.5	11.5	15	12	14	14	14	14
TOTAL	100	100	100	100	100	100	100	100

NZ Roy Morgan Government Confidence Rating: Interviewing Dates (National Party Govt.)

	Nov 24-Dec 7, <u>2014</u> %	Jan 5-18, <u>2015</u> %	Feb 2-15, <u>2015</u> %	Mar 2-15, <u>2015</u> %	April 6-19, <u>2015</u> %	May 4-17, <u>2015</u> %	June 8-21, <u>2015</u> %
Right direction	62.5	67	55	64.5	62	63	62.5
Wrong direction	24.5	23	31	24	27	26.5	27
Roy Morgan GCR#	138	144	124	140.5	135	136.5	135.5
Can't say	13	10	14	11.5	11	11	10.5
TOTAL	100	100	100	100	100	100	100

New Zealand Party Vote



New Zealand Roy Morgan GCR

