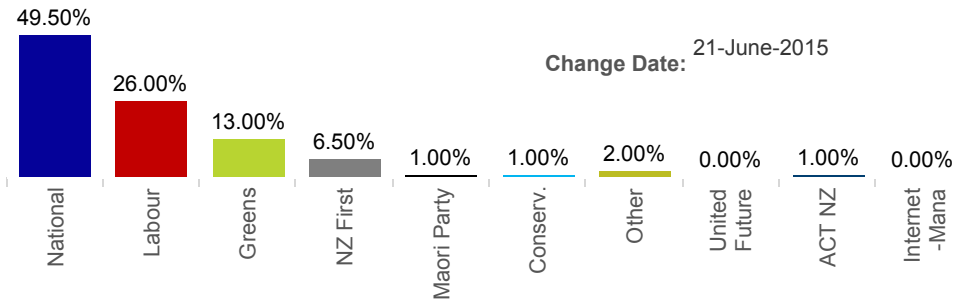


# New Zealand National Poll



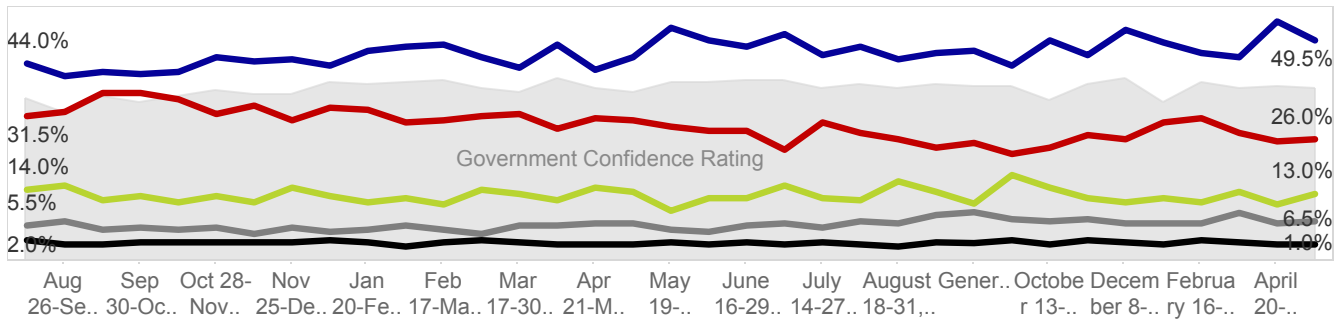
## Latest Party Voting Intention for 21-June-2015



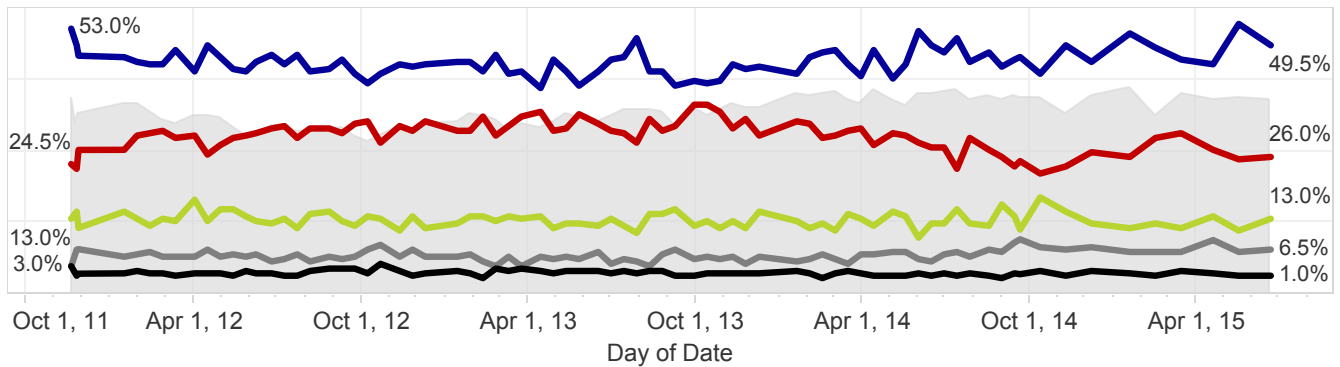
**Latest Roy Morgan New Zealand Government Confidence Rating:**  
 Change (-1.0pts)  
**135.5**

Grey shaded area on graphs

## Recent Voting Intention: Since resignation of David Shearer as Labour Leader (August 22, 2013)



## New Zealand Party Voting Intention since the 2011 New Zealand Election (November 26, 2011)



## Long-term New Zealand Party Voting Intention (2002-2015)

