

Thursday, 28 May 2015

Positive news in lead up to New Zealand Budget helps National Government support jump to 54% - highest since October 2011

During May support for the National Government was up 8.5% to 54% as positive news on the NZ Budget was progressively released. The National-led Government has a large lead over a potential Labour/Greens/ NZ First alliance with their support at 42% (down 7.5%), according to the latest Roy Morgan New Zealand Poll.

If a National Election were held now the latest New Zealand Roy Morgan Poll shows that National would win easily and be able to govern in their own right.

Support for the Maori Party (National partners) dropped to 1% (down 0.5%) while support is unchanged for both Act NZ 1% and United Future 0%.

Support has decreased for all three Parliamentary Opposition parties: Labour's support is now at 25.5% (down 2%), Greens 10.5% (down 3%) and NZ First 6% (down 2.5%). For the parties outside Parliament the Conservative Party of NZ is 1% (unchanged) while the Internet-Mana Party alliance is at 0% (unchanged) and support for Independent/ Others is 1% (down 0.5%).

The latest NZ Roy Morgan Government Confidence Rating has risen to 136.5pts (up 1.5pts). There are now 63% (up 1%) of NZ electors saying NZ is 'heading in the right direction' compared to 26.5% (down 0.5%) that say NZ is 'heading in the wrong direction'. NZ Government Confidence is substantially higher than in Australia – [Australian Government Confidence last week was at 99.5pts.](#)

Gary Morgan, Executive Chairman, Roy Morgan Research, says:

"National has enjoyed a strong increase in support in the lead up to last week's New Zealand Budget – rising to 54% (up a large 8.5% since April). Prime Minister John Key promised in last year's New Zealand election campaign that he would 'govern for all New Zealanders' with his brand of 'compassionate conservatism'. Today's New Zealand Morgan Poll shows his message is getting through to the broader electorate.

"Last week's NZ Budget provided a strong reflection of the strength of the NZ economy including the first increase in welfare benefits in 43 years outside regular inflation adjustments including for families suffering hardship (targeted at the poorest families).

"In addition there were positive economic forecasts for the future including average economic growth of nearly 3% over the next four years, an increase in average wages to \$63,000 per year by 2019 and a Budget surplus in 2015/16, set to increase strongly to over \$3.5 billion by 2018/19.

"The positive overtones from the Budget are also reflected in this month's New Zealand Government Confidence – now at 136.5 (up 1.5pts) with 63% (up 1%) of New Zealanders saying New Zealand is 'heading in the right direction' – far higher than in Australia where only 41.5% of Australians say Australia is 'heading in the right direction' and the [Australian Government Confidence Rating](#) is stuck below 100 at 99.5."

Electors were asked: "If a New Zealand Election were held today which party would receive your party vote?" This latest New Zealand Roy Morgan Poll on voting intention was conducted by telephone – both landline and mobile telephone, with a NZ wide cross-section of 866 electors from May 4-17, 2015. Of all electors surveyed 5% (up 1%) didn't name a party.

For further information:

Contact	Office	Mobile
Gary Morgan:	+61 3 9224 5213	+61 411 129 094
Michele Levine:	+61 3 9224 5215	+61 411 129 093

Margin of Error

The margin of error to be allowed for in any estimate depends mainly on the number of interviews on which it is based. The following table gives indications of the likely range within which estimates would be 95% likely to fall, expressed as the number of percentage points above or below the actual estimate. The figures are approximate and for general guidance only, and assume a simple random sample. Allowance for design effects (such as stratification and weighting) should be made as appropriate.

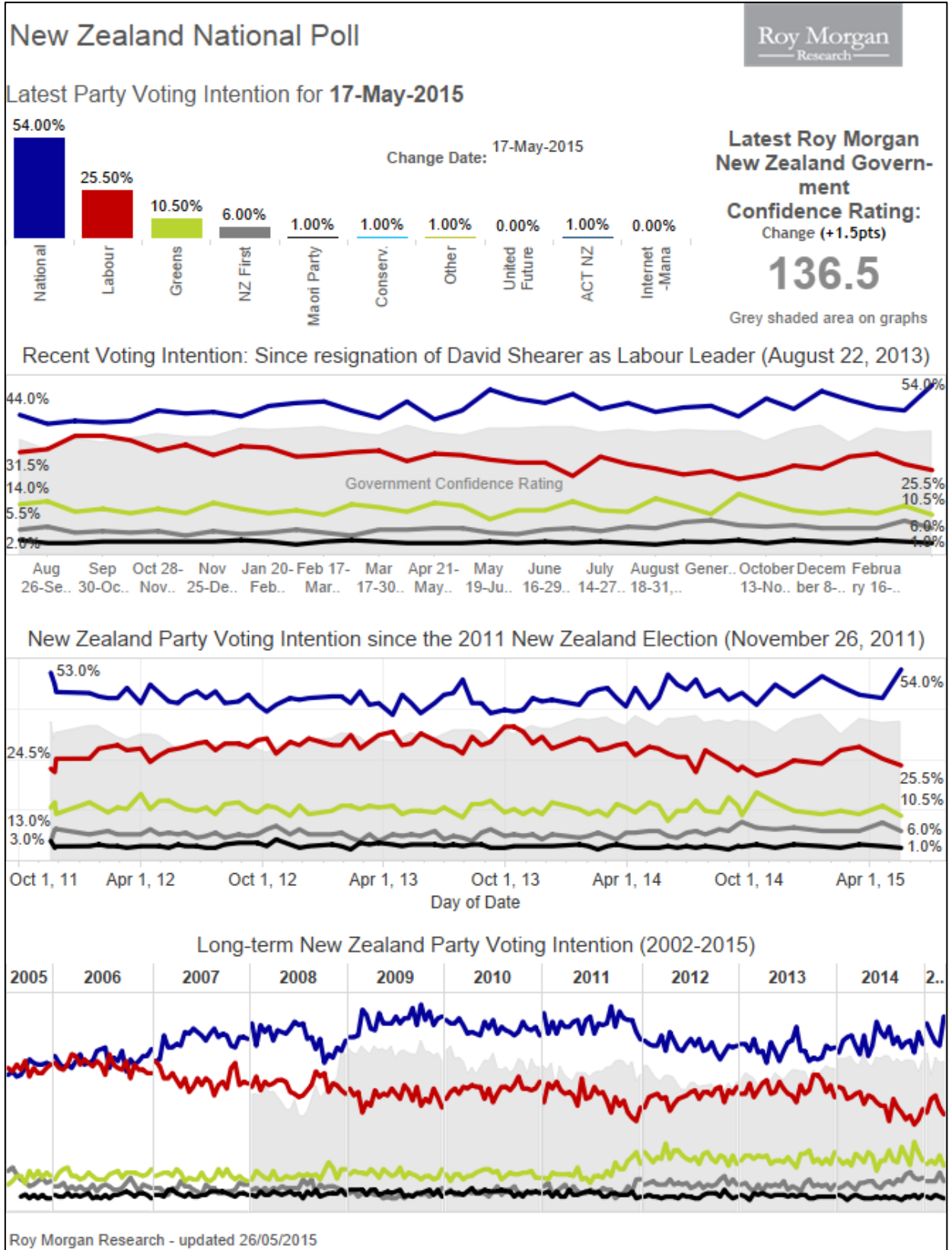
Sample Size	Percentage Estimate			
	40%-60%	25% or 75%	10% or 90%	5% or 95%
1,000	±3.2	±2.7	±1.9	±1.4
1,500	±2.6	±2.2	±1.5	±1.1

Roy Morgan New Zealand Interactive Voting Charts

These interactive charts allow a deeper look at voting patterns in New Zealand over varying timeframes and provide election observers with the ability to pinpoint key turning points for the political parties.

[View interactive New Zealand Election charts here.](#)

Purchase the latest Roy Morgan [New Zealand Electorate Profiles.](#)



Voting Intention Summary

The following table compares the latest New Zealand Roy Morgan Polls on Voting Intention with the result from the September 20, 2014 General Election:

PARTY VOTE ELECTIONS	<u>National</u> %	<u>Labour</u> %	<u>Green Party*</u> %	<u>NZ First</u> %	<u>Maori Party*</u> %	<u>ACT NZ</u> %	<u>United Future*</u> %	<u>Conserva tives*</u> %	<u>Mana Party*</u> %	<u>Internet*</u> %	<u>Other</u> %
October 12, 1996*	33.87	28.19	10.10	13.35	n/a	6.10	0.88	n/a	n/a	n/a	7.51
November 27, 1999	30.50	38.74	5.16	4.26	n/a	7.04	1.66	n/a	n/a	n/a	12.64
July 27, 2002	20.93	41.26	7.00	10.38	n/a	7.14	6.69	n/a	n/a	n/a	6.60
September 17, 2005	39.10	41.10	5.30	5.72	2.12	1.51	2.67	n/a	n/a	n/a	2.48
November 8, 2008	44.93	33.99	6.72	4.07	2.39	3.65	0.87	n/a	n/a	n/a	3.38
November 26, 2011	47.31	27.48	11.06	6.59	1.43	1.07	0.60	2.65	1.08	n/a	0.73
September 20, 2014	47.04	25.13	10.70	8.66	1.32	0.69	0.22	3.97	1.42	n/a	0.85
<u>ROY MORGAN POLL</u>											
Sep 29-Oct 12, 2014	43.5	22.5	17.5	7	2	0.5	0.5	5	1	^	0.5
Oct 27-Nov 9, 2014	49.5	24	14.5	6.5	1	0.5	^	2	0.5	^	1.5
Nov 24-Dec 7, 2014	46	27	12	7	2	1.5	^	2.5	1	^	1
January 5-18, 2015	52	26	11	6	1.5	1	^	2	^	^	0.5
February 2-15, 2015	49	30	12	6	1	^	^	1.5	^	^	0.5
March 2-15, 2015	46.5	31	11	6	2	1	^	1.5	^	^	1
April 6-19, 2015	45.5	27.5	13.5	8.5	1.5	1	^	1	^	^	1.5
May 4-17, 2015	54	25.5	10.5	6	1	1	^	1	^	^	1

^ Result less than 0.5%. *The 1996 Election was the first New Zealand Election contested via MMP (Mixed Member Proportional). At the 1996 Election the Greens Party contested as part of the "Alliance" political grouping with four other political parties. *United Future was formed via a merger in 2000 between the United Party and the Future New Zealand Party, which separately contested the 1999 Election. *The Maori Party was launched in July 2004; The Mana Party was launched in July 2011. The Conservative Party was launched in August 2011. The Internet Party was launched in January 2014. The Internet Party & Mana Party announced an alliance in May 2014 that jointly contested the 2014 NZ Election. The combined result for the Internet-Mana Party Alliance is included in the Mana Party result (1.42%).

Two-Party Preferred: National Party-led Government vs. Parliamentary Opposition Parties

The following table compares the latest New Zealand Roy Morgan Polls on Voting Intention with the result from the September 20, 2014 General Election:

	<u>National Party-led Government*</u>	<u>Parliamentary Opposition Parties#</u>
Election, November 8, 2008	51.84	48.16
Election, November 26, 2011	50.41	46.21
Election, September 20, 2014	49.27	44.49
<u>ROY MORGAN POLL</u>		
September 29 – October 12, 2014	46.5	47
October 27 – November 9, 2014	51	45
November 24 – December 7, 2014	49.5	46
January 5-18, 2015	54.5	43
February 2-15, 2015	50	48
March 2-15, 2015	49.5	48
April 6-19, 2015	48	49.5
May 4-7, 2015	56	42

*National-led Government: National Party, Maori Party, ACT NZ, United Future; #Opposition Parties: Labour Party, Green Party, NZ First. Parties not represented: Conservative Party, Internet Party, Mana Party & Other not included as they are not represented in Parliament.

Finding No. 6248 taken from Computer Report No. 2419

The Roy Morgan Poll is conducted by the **ONLY** Australian and NZ member of the Gallup International Association.

No other public opinion poll taken in Australia or New Zealand has this qualification.

NEW ZEALAND: HEADING IN "RIGHT" OR "WRONG" DIRECTION?

Electors were asked: "Generally speaking, do you feel that things in New Zealand are heading in the right direction or would you say things are seriously heading in the wrong direction?"

NZ Roy Morgan Government Confidence Rating: Interviewing Dates (National Party Govt.)

	June 3-16, <u>2013</u>	June 17-30, <u>2013</u>	July 1-14, <u>2013</u>	July 15-28, <u>2013</u>	July 29-Aug 11, <u>2013</u>	Aug 12-25, <u>2013</u>	Aug 26-Sep 8, <u>2013</u>	Sep 16-29, <u>2013</u>
	%	%	%	%	%	%	%	%
Right direction	54	57	58	58.5	58	58	52.5	59
Wrong direction	33.5	32	29.5	30	30	30.5	35.5	29.5
Roy Morgan GCR#	120.5	125	128.5	128.5	128	127.5	117	129.5
Can't say	12.5	11	12.5	11.5	12	11.5	12	11.5
TOTAL	100	100	100	100	100	100	100	100

NZ Roy Morgan Government Confidence Rating: Interviewing Dates (National Party Govt.)

	Sep 30-Oct 13, <u>2013</u>	Oct 14-27, <u>2013</u>	Oct 28-Nov 10, <u>2013</u>	Nov 11-24, <u>2013</u>	Nov 25-Dec 8, <u>2013</u>	Jan 6-19, <u>2014</u>	Jan 20-Feb 2, <u>2014</u>
	%	%	%	%	%	%	%
Right direction	55	57.5	61	59	58.5	63	63.5
Wrong direction	31	28.5	27.5	29	28.5	23.5	24.5
Roy Morgan GCR#	124	129	133.5	130	130	139.5	139
Can't say	14	14	11.5	12	13	13.5	12
TOTAL	100	100	100	100	100	100	100

NZ Roy Morgan Government Confidence Rating: Interviewing Dates (National Party Govt.)

	Feb 3-16, <u>2014</u>	Feb 17-Mar 2, <u>2014</u>	Mar 3-16, <u>2014</u>	Mar 17-30, <u>2014</u>	Mar 31-Apr 13, <u>2014</u>	Apr 21-May 4, <u>2014</u>	May 5-18, <u>2014</u>
	%	%	%	%	%	%	%
Right direction	63.5	65	61	61	65	62	60
Wrong direction	23.5	23.5	25.5	28	22	26.5	28
Roy Morgan GCR#	140	141.5	135.5	133	143	135.5	132
Can't say	13	11.5	13.5	11	13	11.5	12
TOTAL	100	100	100	100	100	100	100

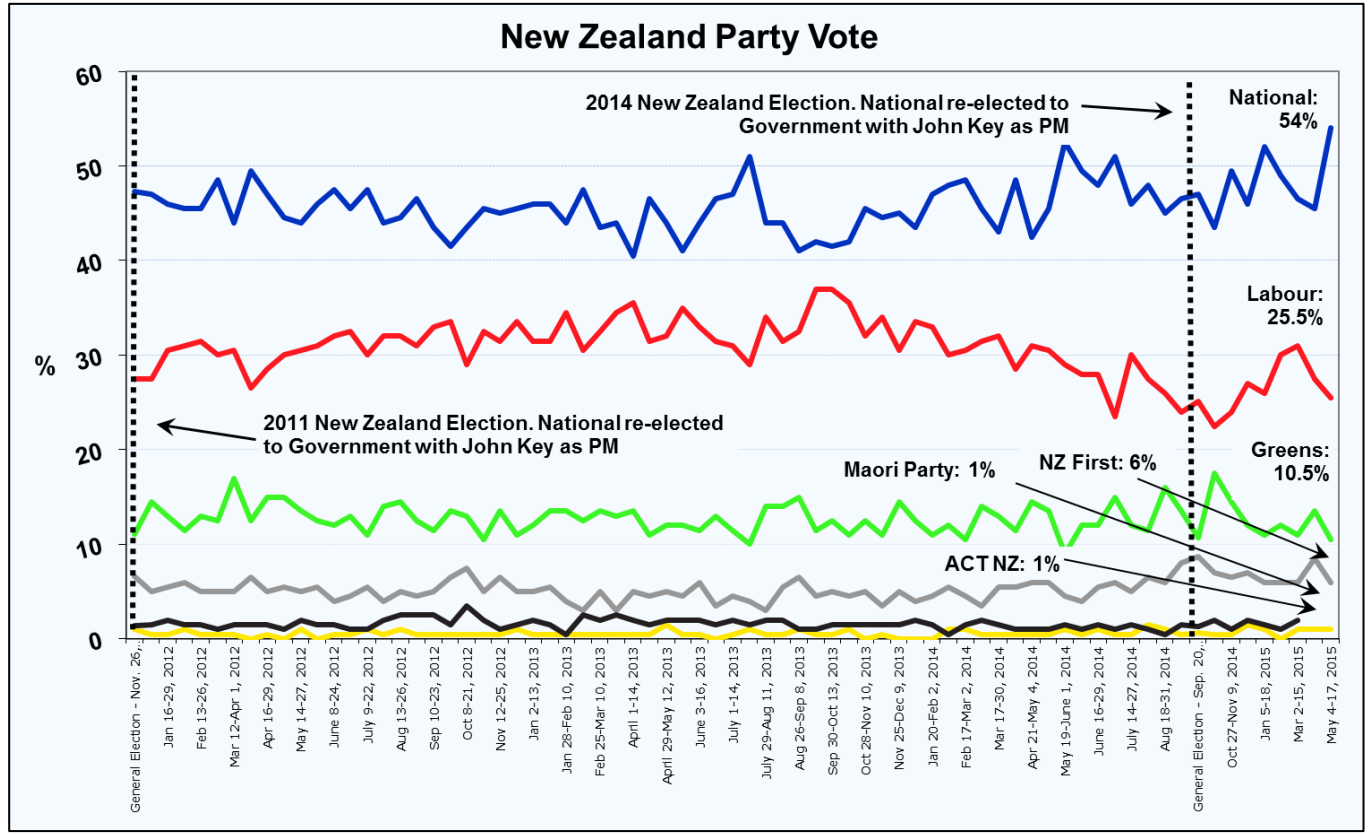
NZ Roy Morgan Government Confidence Rating: Interviewing Dates (National Party Govt.)

	May 19-June 1, <u>2014</u>	June 2-15, <u>2014</u>	June 16-29, <u>2014</u>	June 30-July 13, <u>2014</u>	July 14-27, <u>2014</u>	Aug 4-17, <u>2014</u>	Aug 18-31, <u>2014</u>	Sep 1-14, <u>2014</u>
	%	%	%	%	%	%	%	%
Right direction	64.5	63.5	65	65.5	60	63.5	61	62
Wrong direction	24	24	23.5	23	25	24.5	25	24
Roy Morgan GCR#	140.5	139.5	141.5	142.5	135	139	136	138
Can't say	11.5	12.5	11.5	11.5	15	12	14	14
TOTAL	100	100	100	100	100	100	100	100

NZ Roy Morgan Government Confidence Rating: Interviewing Dates (National Party Govt.)

	Sep 29-Oct 12, <u>2014</u>	Oct 27-Nov 9, <u>2014</u>	Nov 24-Dec 7, <u>2014</u>	Jan 5-18, <u>2015</u>	Feb 2-15, <u>2015</u>	Mar 2-15, <u>2015</u>	April 6-19, <u>2015</u>	May 4-17, <u>2015</u>
	%	%	%	%	%	%	%	%
Right direction	61.5	56	62.5	67	55	64.5	62	63
Wrong direction	24.5	30	24.5	23	31	24	27	26.5
Roy Morgan GCR#	137	126	138	144	124	140.5	135	136.5
Can't say	14	14	13	10	14	11.5	11	11
TOTAL	100	100	100	100	100	100	100	100

New Zealand Party Vote



New Zealand Roy Morgan GCR

