

Tuesday, 18 August 2015

## Support for Labour/Greens coalition overtakes National for first time since New Zealand Election

During July support for National fell 6.5% to 43% now trailing a potential Labour/Greens alliance 45% (up 6%) for the first time in over a year – since May 2014, according to the latest Roy Morgan New Zealand Poll. If a NZ Election were held now the latest New Zealand Roy Morgan Poll shows that the centrist NZ First would be in a position to determine New Zealand's next Government.

Support for the National partners was little changed with the Maori Party up 0.5% to 1.5% while support for Act NZ is 0.5% (down 0.5%) and United Future 0% (unchanged).

Of the three Parliamentary Opposition parties - Labour's support is now at 32% (up 6% to **the highest since March 2014**), Greens 13% (unchanged) and NZ First 7% (up 0.5%). Of the parties outside Parliament the Conservative Party of NZ is 1.5% (up 0.5%) while the Internet-Mana Party alliance is at 0% (unchanged) and support for Independent/ Others is 1.5% (down 0.5%).

The latest NZ Roy Morgan Government Confidence Rating has plunged to 118pts (down 17.5pts) in July. A slim majority of NZ electors 51% (down 11.5%) now say NZ is 'heading in the right direction' compared to 33% (up 6%) that say NZ is 'heading in the wrong direction'. Despite this steep fall New Zealand Government Confidence is still substantially higher than in Australia – [Australian Government Confidence last week was at only 90.5pts](#).

**Gary Morgan, Executive Chairman, Roy Morgan Research, says:**

*"A potential Labour/Greens alliance 45% (up 6% since June) has overtaken National 43% (down 6.5%) for the first time since last year's New Zealand Election. Support for Labour is now 32% (up 6%) – the smallest gap between National and Labour for over a year since March 2014.*

*"Other indicators are also negative for Prime Minister John Key. The Roy Morgan Government Confidence Rating fell steeply in July – now at 118 (down 17.5pts) its lowest since September 2013 while [ANZ-Roy Morgan New Zealand Consumer Confidence Rating fell to 113.9 in July](#) – the lowest since October 2012. Consumer Confidence has now fallen for three straight months.*

*"A slowing New Zealand economy (New Zealand's GDP growth slowed to 0.2% in the March Quarter 2015 – **the slowest New Zealand growth in two years**) is presenting Prime Minister Key with his biggest challenge since coming to office in 2008. A special qualitative and quantitative survey conducted by Roy Morgan Research released last week found [New Zealanders consider Economic issues \(44%\) the biggest problems facing New Zealand](#). Poverty/ The gap between the rich and the poor/ Imbalance of wealth (21%) and Housing shortage/ Housing affordability (14%) were the two single largest issues New Zealanders are facing in June 2015.*

*"The recent economic uncertainty from the Eurozone (Greece) and New Zealand's largest export destination – China – are providing challenges to New Zealand's economic strength of recent years. The uncertainty has contributed to the continuing fall in the New Zealand Dollar – now at a six-year low of 65.2 US cents today, down 12 cents (15.5%) since late April. In particular, the price of a tonne of whole milk powder has dropped to \$US1,848 a tonne this week – down from \$US 3,273 in February (a decline of \$1,425 or a massive 43.5%). Incredibly, dairy exports account for around 30% of all New Zealand's merchandise exports."*

Electors were asked: "If a New Zealand Election were held today which party would receive your party vote?" This latest New Zealand Roy Morgan Poll on voting intention was conducted by telephone – both landline and mobile telephone, with a NZ wide cross-section of 886 electors in July 2015. Of all electors surveyed 5.5% (up 0.5%) didn't name a party.

**For further information:**

Contact	Office	Mobile
Gary Morgan:	+61 3 9224 5213	+61 411 129 094
Michele Levine:	+61 3 9224 5215	+61 411 129 093

**Margin of Error**

The margin of error to be allowed for in any estimate depends mainly on the number of interviews on which it is based. The following table gives indications of the likely range within which estimates would be 95% likely to fall, expressed as the number of percentage points above or below the actual estimate. The figures are approximate and for general guidance only, and assume a simple random sample. Allowance for design effects (such as stratification and weighting) should be made as appropriate.

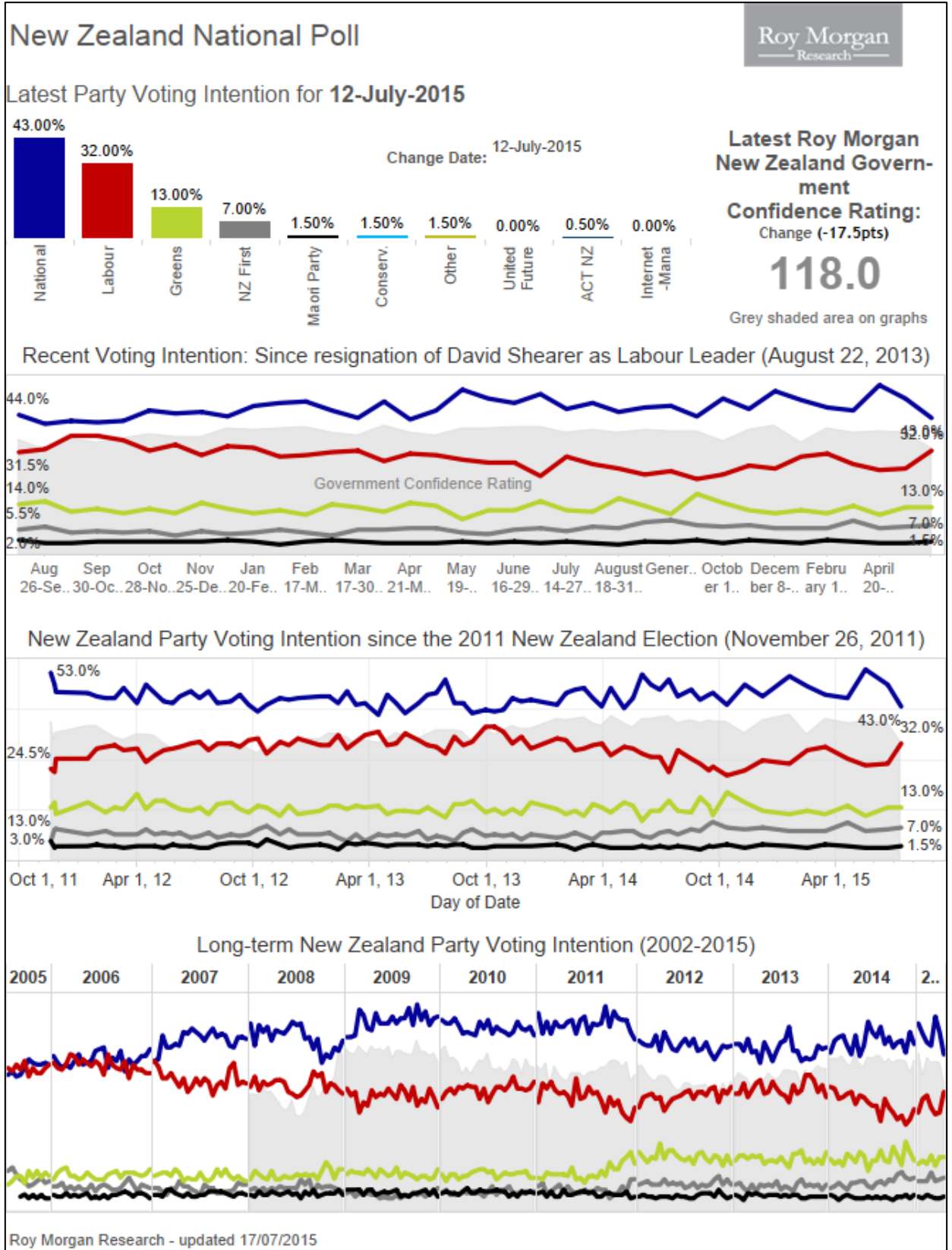
Sample Size	Percentage Estimate			
	40%-60%	25% or 75%	10% or 90%	5% or 95%
<b>1,000</b>	±3.2	±2.7	±1.9	±1.4
<b>1,500</b>	±2.6	±2.2	±1.5	±1.1

**Roy Morgan New Zealand Interactive Voting Charts**

These interactive charts allow a deeper look at voting patterns in New Zealand over varying timeframes and provide election observers with the ability to pinpoint key turning points for the political parties.

[View interactive New Zealand Election charts here.](#)

Purchase the latest Roy Morgan [New Zealand Electorate Profiles](#).



## Voting Intention Summary

The following table compares the latest New Zealand Roy Morgan Polls on Voting Intention with the result from the September 20, 2014 General Election:

<b>PARTY VOTE ELECTIONS</b>	<b>National</b> %	<b>Labour</b> %	<b>Green Party*</b> %	<b>NZ First</b> %	<b>Maori Party*</b> %	<b>ACT NZ</b> %	<b>United Future*</b> %	<b>Conserva tives*</b> %	<b>Mana Party*</b> %	<b>Internet*</b> %	<b>Other</b> %
October 12, 1996*	33.87	28.19	10.10	13.35	n/a	6.10	0.88	n/a	n/a	n/a	7.51
November 27, 1999	30.50	38.74	5.16	4.26	n/a	7.04	1.66	n/a	n/a	n/a	12.64
July 27, 2002	20.93	41.26	7.00	10.38	n/a	7.14	6.69	n/a	n/a	n/a	6.60
September 17, 2005	39.10	41.10	5.30	5.72	2.12	1.51	2.67	n/a	n/a	n/a	2.48
November 8, 2008	44.93	33.99	6.72	4.07	2.39	3.65	0.87	n/a	n/a	n/a	3.38
November 26, 2011	47.31	27.48	11.06	6.59	1.43	1.07	0.60	2.65	1.08	n/a	0.73
September 20, 2014	47.04	25.13	10.70	8.66	1.32	0.69	0.22	3.97	1.42	n/a	0.85
<b>ROY MORGAN POLL</b>											
Sep 29-Oct 12, 2014	43.5	22.5	17.5	7	2	0.5	0.5	5	1	^	0.5
Oct 27-Nov 9, 2014	49.5	24	14.5	6.5	1	0.5	^	2	0.5	^	1.5
Nov 24-Dec 7, 2014	46	27	12	7	2	1.5	^	2.5	1	^	1
January 5-18, 2015	52	26	11	6	1.5	1	^	2	^	^	0.5
February 2-15, 2015	49	30	12	6	1	^	^	1.5	^	^	0.5
March 2-15, 2015	46.5	31	11	6	2	1	^	1.5	^	^	1
April 6-19, 2015	45.5	27.5	13.5	8.5	1.5	1	^	1	^	^	1.5
May 4-17, 2015	54	25.5	10.5	6	1	1	^	1	^	^	1
June 8-21, 2015	49.5	26	13	6.5	1	1	^	1	^	^	2
June 29-July 12, 2015	43	32	13	7	1.5	0.5	^	1.5	^	^	1.5

^ Result less than 0.5%. \*The 1996 Election was the first New Zealand Election contested via MMP (Mixed Member Proportional). At the 1996 Election the Greens Party contested as part of the "Alliance" political grouping with four other political parties. \*United Future was formed via a merger in 2000 between the United Party and the Future New Zealand Party, which separately contested the 1999 Election. \*The Maori Party was launched in July 2004; The Mana Party was launched in July 2011. The Conservative Party was launched in August 2011. The Internet Party was launched in January 2014. The Internet Party & Mana Party announced an alliance in May 2014 that jointly contested the 2014 NZ Election. The combined result for the Internet-Mana Party Alliance is included in the Mana Party result (1.42%).

## Two-Party Preferred: National Party-led Government vs. Parliamentary Opposition Parties

The following table compares the latest New Zealand Roy Morgan Polls on Voting Intention with the result from the September 20, 2014 General Election:

	<b>National Party-led Government*</b>	<b>Parliamentary Opposition Parties#</b>
Election, November 8, 2008	51.84	48.16
Election, November 26, 2011	50.41	46.21
Election, September 20, 2014	49.27	44.49
<b>ROY MORGAN POLL</b>		
September 29 – October 12, 2014	46.5	47
October 27 – November 9, 2014	51	45
November 24 – December 7, 2014	49.5	46
January 5-18, 2015	54.5	43
February 2-15, 2015	50	48
March 2-15, 2015	49.5	48
April 6-19, 2015	48	49.5
May 4-7, 2015	56	42
June 8-21, 2015	51.5	45.5
June 29-July 12, 2015	45	52

\*National-led Government: National Party, Maori Party, ACT NZ, United Future; #Opposition Parties: Labour Party, Green Party, NZ First. Parties not represented: Conservative Party, Internet Party, Mana Party & Other not included as they are not represented in Parliament.

## Finding No. 6349 taken from Computer Report No. 2422

The Roy Morgan Poll is conducted by the **ONLY** Australian and NZ member of the Gallup International Association.

No other public opinion poll taken in Australia or New Zealand has this qualification.

**NEW ZEALAND: HEADING IN “RIGHT” OR “WRONG” DIRECTION?**

Electors were asked: “Generally speaking, do you feel that things in New Zealand are heading in the right direction or would you say things are seriously heading in the wrong direction?”

**NZ Roy Morgan Government Confidence Rating: Interviewing Dates (National Party Govt.)**

	July 1-14, <u>2013</u> %	July 15-28, <u>2013</u> %	July 29-Aug 11, <u>2013</u> %	Aug 12-25, <u>2013</u> %	Aug 26-Sep 8, <u>2013</u> %	Sep 16-29, <u>2013</u> %	Sep 30-Oct 13, <u>2013</u> %	Oct 14-27, <u>2013</u> %
Right direction	58	58.5	58	58	52.5	59	55	57.5
Wrong direction	29.5	30	30	30.5	35.5	29.5	31	28.5
<b>Roy Morgan GCR#</b>	<b>128.5</b>	<b>128.5</b>	<b>128</b>	<b>127.5</b>	<b>117</b>	<b>129.5</b>	<b>124</b>	<b>129</b>
Can't say	12.5	11.5	12	11.5	12	11.5	14	14
<b>TOTAL</b>	<b>100</b>	<b>100</b>	<b>100</b>	<b>100</b>	<b>100</b>	<b>100</b>	<b>100</b>	<b>100</b>

**NZ Roy Morgan Government Confidence Rating: Interviewing Dates (National Party Govt.)**

	Oct 28-Nov 10, <u>2013</u> %	Nov 11-24, <u>2013</u> %	Nov 25-Dec 8, <u>2013</u> %	Jan 6-19, <u>2014</u> %	Jan 20-Feb 2, <u>2014</u> %	Feb 3-16, <u>2014</u> %	Feb 17-Mar 2, <u>2014</u> %
Right direction	61	59	58.5	63	63.5	63.5	65
Wrong direction	27.5	29	28.5	23.5	24.5	23.5	23.5
<b>Roy Morgan GCR#</b>	<b>133.5</b>	<b>130</b>	<b>130</b>	<b>139.5</b>	<b>139</b>	<b>140</b>	<b>141.5</b>
Can't say	11.5	12	13	13.5	12	13	11.5
<b>TOTAL</b>	<b>100</b>	<b>100</b>	<b>100</b>	<b>100</b>	<b>100</b>	<b>100</b>	<b>100</b>

**NZ Roy Morgan Government Confidence Rating: Interviewing Dates (National Party Govt.)**

	Mar 3-16, <u>2014</u> %	Mar 17-30, <u>2014</u> %	Mar 31-Apr 13, <u>2014</u> %	Apr 21-May 4, <u>2014</u> %	May 5-18, <u>2014</u> %	May 19-June 1, <u>2014</u> %	June 2-15, <u>2014</u> %
Right direction	61	61	65	62	60	64.5	63.5
Wrong direction	25.5	28	22	26.5	28	24	24
<b>Roy Morgan GCR#</b>	<b>135.5</b>	<b>133</b>	<b>143</b>	<b>135.5</b>	<b>132</b>	<b>140.5</b>	<b>139.5</b>
Can't say	13.5	11	13	11.5	12	11.5	12.5
<b>TOTAL</b>	<b>100</b>	<b>100</b>	<b>100</b>	<b>100</b>	<b>100</b>	<b>100</b>	<b>100</b>

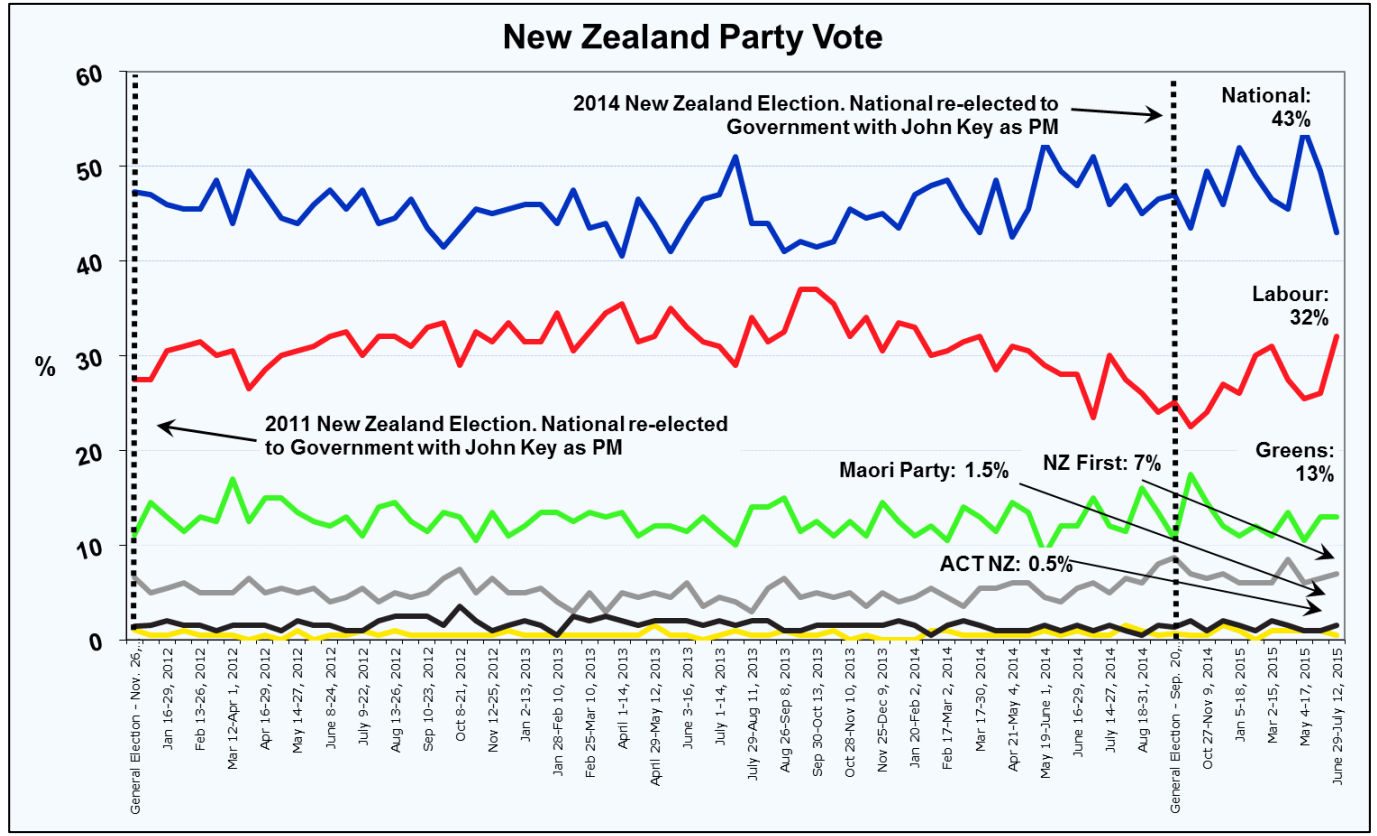
**NZ Roy Morgan Government Confidence Rating: Interviewing Dates (National Party Govt.)**

	June 16-29, <u>2014</u> %	June 30-July 13, <u>2014</u> %	July 14-27, <u>2014</u> %	Aug 4-17, <u>2014</u> %	Aug 18-31, <u>2014</u> %	Sep 1-14, <u>2014</u> %	Sep 29-Oct 12, <u>2014</u> %	Oct 27-Nov 9, <u>2014</u> %
Right direction	65	65.5	60	63.5	61	62	61.5	56
Wrong direction	23.5	23	25	24.5	25	24	24.5	30
<b>Roy Morgan GCR#</b>	<b>141.5</b>	<b>142.5</b>	<b>135</b>	<b>139</b>	<b>136</b>	<b>138</b>	<b>137</b>	<b>126</b>
Can't say	11.5	11.5	15	12	14	14	14	14
<b>TOTAL</b>	<b>100</b>	<b>100</b>	<b>100</b>	<b>100</b>	<b>100</b>	<b>100</b>	<b>100</b>	<b>100</b>

**NZ Roy Morgan Government Confidence Rating: Interviewing Dates (National Party Govt.)**

	Nov 24-Dec 7, <u>2014</u> %	Jan 5-18, <u>2015</u> %	Feb 2-15, <u>2015</u> %	Mar 2-15, <u>2015</u> %	April 6-19, <u>2015</u> %	May 4-17, <u>2015</u> %	June 8-21, <u>2015</u> %	June 29-July 12, <u>2015</u> %
Right direction	62.5	67	55	64.5	62	63	62.5	51
Wrong direction	24.5	23	31	24	27	26.5	27	33
<b>Roy Morgan GCR#</b>	<b>138</b>	<b>144</b>	<b>124</b>	<b>140.5</b>	<b>135</b>	<b>136.5</b>	<b>135.5</b>	<b>118</b>
Can't say	13	10	14	11.5	11	11	10.5	16
<b>TOTAL</b>	<b>100</b>	<b>100</b>	<b>100</b>	<b>100</b>	<b>100</b>	<b>100</b>	<b>100</b>	<b>100</b>

**New Zealand Party Vote**



**New Zealand Roy Morgan GCR**

