

Friday, 18 March 2016

## National lead cut to smallest since September as NZ First vote surges to 9% as Winston Peters takes strong stand on New Zealand Flag Referendum

**During March support for National fell 2.5% to 46% - the lowest since September 2015, now only 4% ahead of a potential Labour/Greens alliance 42% (up 0.5%). If a New Zealand Election were held now the latest NZ Roy Morgan Poll shows NZ First 9% (up 3%) would hold the balance of power and be in a position to determine who would form the next New Zealand Government.**

Support for the National partners showed little change with the Maori Party, unchanged at 1%, Act NZ was 1% (up 0.5%) and United Future was 0% (unchanged).

Of the three Parliamentary Opposition parties - Labour's support is now at 28% (up 1%), Greens 14% (down 0.5%) and NZ First has jumped 3% to 9% - its highest level of support in over a decade since August 2005. Of the parties outside Parliament the Conservative Party of NZ is 0.5% (down 0.5%), the Mana Party is 0.5% (unchanged) and support for Independent/ Others is 0% (down 1%).

The NZ Roy Morgan Government Confidence Rating has increased to 132pts (up 4pts) in March. A clear majority of NZ electors 61% (up 4.5%) say NZ is 'heading in the right direction' compared to 29% (up 0.5%) that say NZ is 'heading in the wrong direction'. NZ Government Confidence is much higher than in Australia – Australian Government Confidence is 102pts in March.

### Gary Morgan, Executive Chairman, Roy Morgan Research, says:

*"Today's Roy Morgan New Zealand Poll shows the lead for National 46% (down 2.5% since February) at its smallest over a potential Labour/ Greens alliance 42% (up 0.5%) since September 2015. As the results tighten, this brings the centrist party, NZ First 9% (up 3%) into the equation as potential 'king-makers' able to determine who would form New Zealand's next Government and be Prime Minister after the next New Zealand Election – due late next year.*

*"New Zealand First Leader Winston Peter's strong stand on the New Zealand Flag Referendum – being voted on this month – that only New Zealand citizens should have the right to vote, rather than both citizens and permanent residents, appears to have won the party significant support. NZ First was last in Government under Prime Minister Helen Clark between 2005-08.*

*"Despite the drop in support for National, New Zealand Roy Morgan Government Confidence increased to 132pts (up 4pts) in March and is now a very large 30pts higher than Roy Morgan Australian Government Confidence – which is at a lowly 102pts in mid-March."*

Electors were asked: "If a New Zealand Election were held today which party would receive your party vote?" This latest New Zealand Roy Morgan Poll on voting intention was conducted by telephone – both landline and mobile telephone, with a NZ wide cross-section of 861 electors in March 2016. Of all electors surveyed 8% (up 1%) didn't name a party.

### For further information:

Contact	Office	Mobile
Gary Morgan:	+61 3 9224 5213	+61 411 129 094
Michele Levine:	+61 3 9224 5215	+61 411 129 093

**Margin of Error**

The margin of error to be allowed for in any estimate depends mainly on the number of interviews on which it is based. The following table gives indications of the likely range within which estimates would be 95% likely to fall, expressed as the number of percentage points above or below the actual estimate. The figures are approximate and for general guidance only, and assume a simple random sample. Allowance for design effects (such as stratification and weighting) should be made as appropriate.

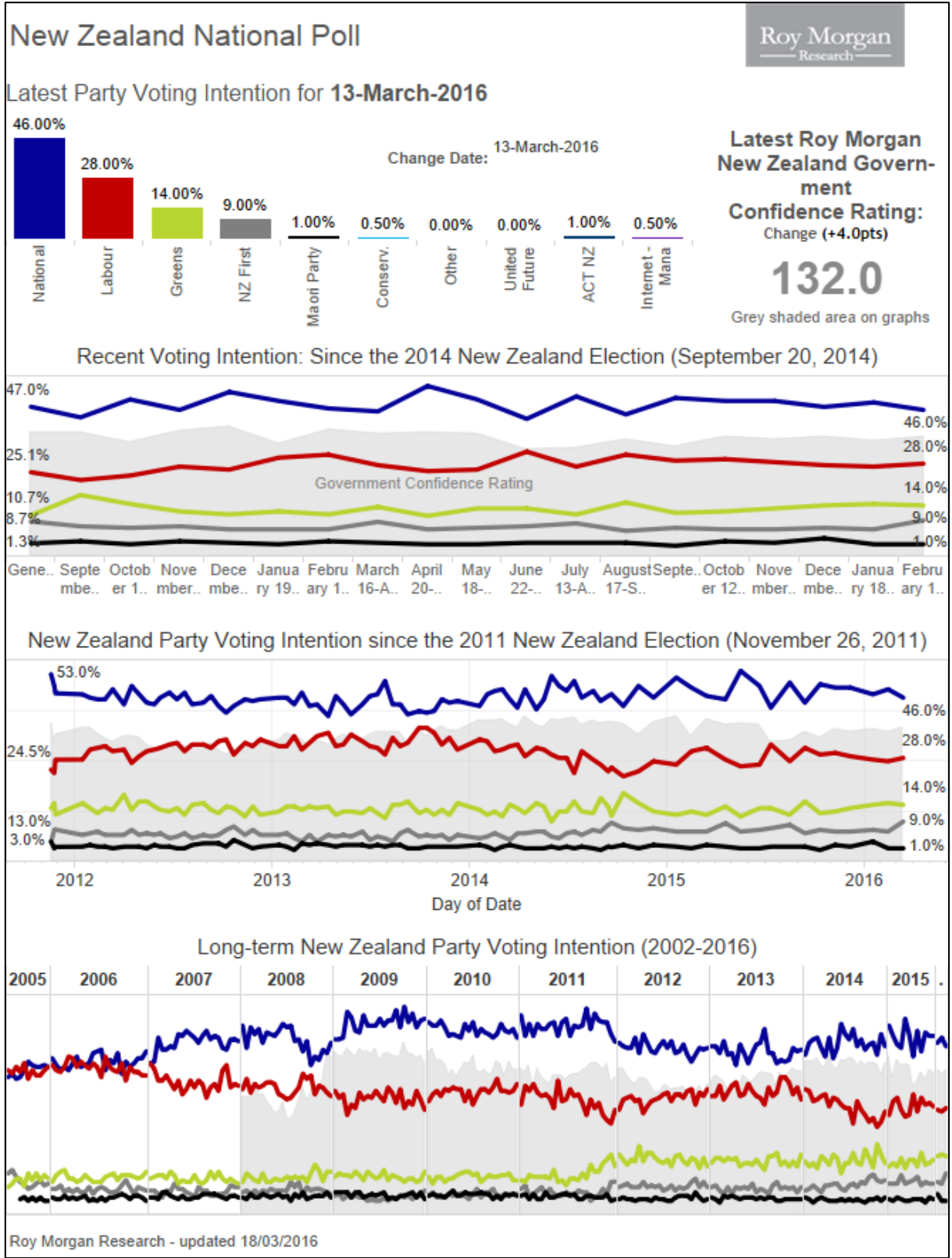
Sample Size	Percentage Estimate			
	40%-60%	25% or 75%	10% or 90%	5% or 95%
1,000	±3.2	±2.7	±1.9	±1.4
1,500	±2.6	±2.2	±1.5	±1.1

## Roy Morgan New Zealand Interactive Voting Charts

These interactive charts allow a deeper look at voting patterns in New Zealand over varying timeframes and provide election observers with the ability to pinpoint key turning points for the political parties.

[View interactive New Zealand Election charts here.](#)

Purchase the latest Roy Morgan [New Zealand Electorate Profiles.](#)



## Voting Intention Summary

The following table compares the latest New Zealand Roy Morgan Polls on Voting Intention with the result from the September 20, 2014 General Election:

<b>PARTY VOTE ELECTIONS</b>	<b><u>National</u> %</b>	<b><u>Labour</u> %</b>	<b><u>Green Party*</u> %</b>	<b><u>NZ First</u> %</b>	<b><u>Maori Party*</u> %</b>	<b><u>ACT NZ</u> %</b>	<b><u>United Future*</u> %</b>	<b><u>Conserva tives*</u> %</b>	<b><u>Mana Party*</u> %</b>	<b><u>Internet*</u> %</b>	<b><u>Other</u> %</b>
October 12, 1996*	33.87	28.19	10.10	13.35	n/a	6.10	0.88	n/a	n/a	n/a	7.51
November 27, 1999	30.50	38.74	5.16	4.26	n/a	7.04	1.66	n/a	n/a	n/a	12.64
July 27, 2002	20.93	41.26	7.00	10.38	n/a	7.14	6.69	n/a	n/a	n/a	6.60
September 17, 2005	39.10	41.10	5.30	5.72	2.12	1.51	2.67	n/a	n/a	n/a	2.48
November 8, 2008	44.93	33.99	6.72	4.07	2.39	3.65	0.87	n/a	n/a	n/a	3.38
November 26, 2011	47.31	27.48	11.06	6.59	1.43	1.07	0.60	2.65	1.08	n/a	0.73
September 20, 2014	47.04	25.13	10.70	8.66	1.32	0.69	0.22	3.97	1.42	n/a	0.85
<b><u>ROY MORGAN POLL</u></b>											
Sep 29-Oct 12, 2014	43.5	22.5	17.5	7	2	0.5	0.5	5	1	^	0.5
Oct 27-Nov 9, 2014	49.5	24	14.5	6.5	1	0.5	^	2	0.5	^	1.5
Nov 24-Dec 7, 2014	46	27	12	7	2	1.5	^	2.5	1	^	1
January 5-18, 2015	52	26	11	6	1.5	1	^	2	^	^	0.5
February 2-15, 2015	49	30	12	6	1	^	^	1.5	^	^	0.5
March 2-15, 2015	46.5	31	11	6	2	1	^	1.5	^	^	1
April 6-19, 2015	45.5	27.5	13.5	8.5	1.5	1	^	1	^	^	1.5
May 4-17, 2015	54	25.5	10.5	6	1	1	^	1	^	^	1
June 8-21, 2015	49.5	26	13	6.5	1	1	^	1	^	^	2
June 29-July 12, 2015	43	32	13	7	1.5	0.5	^	1.5	^	^	1.5
August 3-16, 2015	50.5	27	11	8	1.5	0.5	^	^	0.5	^	1
Aug 31-Sep 13, 2015	44.5	31	15	5.5	1.5	0.5	0.5	1	0.5	^	^
Sep 28-Oct 11, 2015	50	29	11.5	6.5	0.5	0.5	^	0.5	0.5	^	1
Oct 26-Nov 8, 2015	49	29.5	12	6	2	0.5	^	0.5	0.5	^	^
Nov 23 - Dec 6, 2015	49	28.5	13	6	1.5	0.5	0.5	0.5	^	^	0.5
Jan 4-17, 2016	47	27.5	14	6.5	3	0.5	^	1	^	^	0.5
Feb 1-14, 2016	48.5	27	14.5	6	1	0.5	^	1	0.5	^	1
Feb 29 - Mar 13, 2016	46	28	14	9	1	1	^	0.5	0.5	^	^

^ Result less than 0.5%. \*The 1996 Election was the first New Zealand Election contested via MMP (Mixed Member Proportional). At the 1996 Election the Greens Party contested as part of the "Alliance" political grouping with four other political parties. \*United Future was formed via a merger in 2000 between the United Party and the Future New Zealand Party, which separately contested the 1999 Election. \*The Maori Party was launched in July 2004; The Mana Party was launched in July 2011. The Conservative Party was launched in August 2011. The Internet Party was launched in January 2014. The Internet Party & Mana Party announced an alliance in May 2014 that jointly contested the 2014 NZ Election. The combined result for the Internet-Mana Party Alliance is included in the Mana Party result (1.42%).

FOR IMMEDIATE RELEASE

## **Two-Party Preferred: National Party-led Government vs. Parliamentary Opposition Parties**

The following table compares the latest New Zealand Roy Morgan Polls on Voting Intention with the result from the September 20, 2014 General Election:

	<b>National Party-led Government*</b>	<b>Parliamentary Opposition Parties#</b>
Election, November 8, 2008	51.84	48.16
Election, November 26, 2011	50.41	46.21
Election, September 20, 2014	49.27	44.49
<b><u>ROY MORGAN POLL</u></b>		
September 29 – October 12, 2014	46.5	47
October 27 – November 9, 2014	51	45
November 24 – December 7, 2014	49.5	46
January 5-18, 2015	54.5	43
February 2-15, 2015	50	48
March 2-15, 2015	49.5	48
April 6-19, 2015	48	49.5
May 4-7, 2015	56	42
June 8-21, 2015	51.5	45.5
June 29-July 12, 2015	45	52
August 3-16, 2015	52.5	46
Aug 31-Sep 13, 2015	47	51.5
Sep 28-Oct 11, 2015	51	47
Oct 26-Nov 8, 2015	51.5	47.5
Nov 23-Dec 6, 2015	51.5	47.5
Jan 4-17, 2016	50.5	48
Feb 1-14, 2016	50	47.5
Feb 29 – Mar 13, 2016	48	51

\*National-led Government: National Party, Maori Party, ACT NZ, United Future; #Opposition Parties: Labour Party, Green Party, NZ First. Parties not represented: Conservative Party, Internet Party, Mana Party & Other not included as they are not represented in Parliament.

### **Finding No. 6715 taken from Computer Report No. 2430**

The Roy Morgan Poll is conducted by the **ONLY** Australian and NZ member of the Gallup International Association.

No other public opinion poll taken in Australia or New Zealand has this qualification.

**NEW ZEALAND: HEADING IN “RIGHT” OR “WRONG” DIRECTION?**

Electors were asked: “Generally speaking, do you feel that things in New Zealand are heading in the right direction or would you say things are seriously heading in the wrong direction?”

**NZ Roy Morgan Government Confidence Rating: Interviewing Dates (National Party Govt.)**

	Jan 6-19, <u>2014</u>	Jan 20-Feb 2, <u>2014</u>	Feb 3-16, <u>2014</u>	Feb 17-Mar 2, <u>2014</u>	Mar 3-16, <u>2014</u>	Mar 17-30, <u>2014</u>	Mar 31-Apr 13, <u>2014</u>	Apr 21-May 4, <u>2014</u>
	%	%	%	%	%	%	%	%
Right direction	63	63.5	63.5	65	61	61	65	62
Wrong direction	23.5	24.5	23.5	23.5	25.5	28	22	26.5
<b>Roy Morgan GCR#</b>	<b>139.5</b>	<b>139</b>	<b>140</b>	<b>141.5</b>	<b>135.5</b>	<b>133</b>	<b>143</b>	<b>135.5</b>
Can't say	13.5	12	13	11.5	13.5	11	13	11.5
<b>TOTAL</b>	<b>100</b>	<b>100</b>	<b>100</b>	<b>100</b>	<b>100</b>	<b>100</b>	<b>100</b>	<b>100</b>

**NZ Roy Morgan Government Confidence Rating: Interviewing Dates (National Party Govt.)**

	May 5-18, <u>2014</u>	May 19-June 1, <u>2014</u>	June 2-15, <u>2014</u>	June 16-29, <u>2014</u>	June 30-July 13, <u>2014</u>	July 14-27, <u>2014</u>	Aug 4-17, <u>2014</u>
	%	%	%	%	%	%	%
Right direction	60	64.5	63.5	65	65.5	60	63.5
Wrong direction	28	24	24	23.5	23	25	24.5
<b>Roy Morgan GCR#</b>	<b>132</b>	<b>140.5</b>	<b>139.5</b>	<b>141.5</b>	<b>142.5</b>	<b>135</b>	<b>139</b>
Can't say	12	11.5	12.5	11.5	11.5	15	12
<b>TOTAL</b>	<b>100</b>	<b>100</b>	<b>100</b>	<b>100</b>	<b>100</b>	<b>100</b>	<b>100</b>

**NZ Roy Morgan Government Confidence Rating: Interviewing Dates (National Party Govt.)**

	Aug 18-31, <u>2014</u>	Sep 1-14, <u>2014</u>	Sep 29-Oct 12, <u>2014</u>	Oct 27-Nov 9, <u>2014</u>	Nov 24-Dec 7, <u>2014</u>	Jan 5-18, <u>2015</u>	Feb 2-15, <u>2015</u>
	%	%	%	%	%	%	%
Right direction	61	62	61.5	56	62.5	67	55
Wrong direction	25	24	24.5	30	24.5	23	31
<b>Roy Morgan GCR#</b>	<b>136</b>	<b>138</b>	<b>137</b>	<b>126</b>	<b>138</b>	<b>144</b>	<b>124</b>
Can't say	14	14	14	14	13	10	14
<b>TOTAL</b>	<b>100</b>	<b>100</b>	<b>100</b>	<b>100</b>	<b>100</b>	<b>100</b>	<b>100</b>

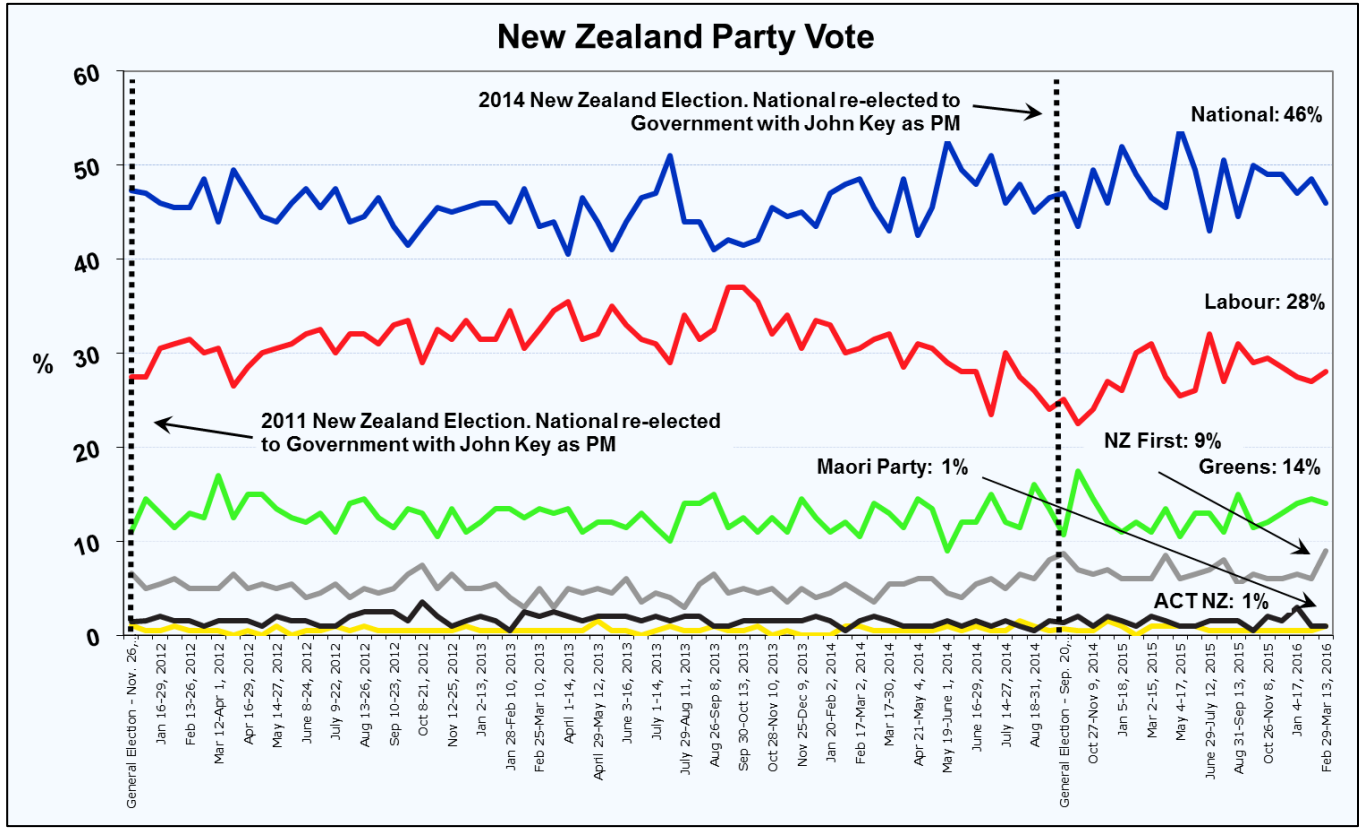
**NZ Roy Morgan Government Confidence Rating: Interviewing Dates (National Party Govt.)**

	Mar 2-15, <u>2015</u>	April 6-19, <u>2015</u>	May 4-17, <u>2015</u>	June 8-21, <u>2015</u>	June 29-July 12, <u>2015</u>	Aug 3-16, <u>2015</u>	Aug 31-Sep 13, <u>2015</u>	Sep 28-Oct 11, <u>2015</u>
	%	%	%	%	%	%	%	%
Right direction	64.5	62	63	62.5	51	54	58	53
Wrong direction	24	27	26.5	27	33	34	29.5	31
<b>Roy Morgan GCR#</b>	<b>140.5</b>	<b>135</b>	<b>136.5</b>	<b>135.5</b>	<b>118</b>	<b>120</b>	<b>128.5</b>	<b>122</b>
Can't say	11.5	11	11	10.5	16	12	12.5	16
<b>TOTAL</b>	<b>100</b>	<b>100</b>	<b>100</b>	<b>100</b>	<b>100</b>	<b>100</b>	<b>100</b>	<b>100</b>

**NZ Roy Morgan Government Confidence Rating: Interviewing Dates (National Party Govt.)**

	Oct 26- Nov 8, <u>2015</u>	Nov 23-Dec 6, <u>2015</u>	Jan 4-17, <u>2016</u>	Feb 1-14, <u>2016</u>	Feb 29-Mar 13, <u>2016</u>
	%	%	%	%	%
Right direction	60	59.5	59.5	56.5	61
Wrong direction	28.5	31	28	28.5	29
<b>Roy Morgan GCR#</b>	<b>131.5</b>	<b>128.5</b>	<b>131.5</b>	<b>128</b>	<b>132</b>
Can't say	11.5	9.5	12.5	15	10
<b>TOTAL</b>	<b>100</b>	<b>100</b>	<b>100</b>	<b>100</b>	<b>100</b>

**New Zealand Party Vote**



**New Zealand Roy Morgan GCR**

