

Friday, 15 September 2017

New Zealand Election on a knife edge but Labour favoured with the support of the Greens & Maori Party as 'Jacindamania' pulls support from National & New Zealand First

Final Roy Morgan New Zealand Poll shows Labour/Greens (60 seats) with Maori Party support favoured to win knife-edge election over National/NZ First/Act NZ (58 seats).

In September support for a potential Labour/Greens coalition has increased to 48.5% (up 7% from mid-August 2017) now well ahead of incumbent National on 40% (down 2.5%).

- National remains (just) the most popular party with support of 40%, however this is a large drop of 7% since the 2014 Election which looks set to cost the party a chance of leading a new Government after next week's election.
- Labour's support has surged on the back of new Leader Jacinda Ardern to 39.5% - up 14.4% since the 2014 Election, and up 7% since mid-August just after Ardern became Leader.
- Greens support of 9% is down 1.7% since the Election, but unchanged on a month ago, just after former Leader Metiria Turei resigned her job in late July.
- The surge in support for Labour has come at the expense of New Zealand First with support down 2.7% from the election to 6% and now just above the 5% threshold for winning list seats. Support for New Zealand First has plunged by 5.5% from last month.
- Overall support for the governing National-led coalition was down 6.8% from the election to 42.5% with support for National's coalition partners virtually unchanged: Maori Party on 2% (up 0.7%), Act NZ on 0.5% (down 0.2%) and United Future on 0% (down 0.2%) with long-time party leader Peter Dunne not recontesting his seat at this year's election.
- Support for the parties currently outside Parliament was 3% led by new party The Opportunities Party (T.O.P.) unchanged on 2% with the Conservatives on 0.5% - down a significant 3.5% since the 2014 New Zealand Election.

2017 New Zealand Election Seats Projection

Labour (49 seats); Greens (11 seats) & Maori Party (2 seats): Total 62 seats cf.

National (50 seats); NZ First (7 seats) & Act NZ (1 seat): Total 58 seats. See below for more detail.

On the eve of the 2014 New Zealand Election [Roy Morgan projected](#) a narrow win for the National/Maori Party/Act NZ/ United Future coalition on 63 seats cf. Labour/Greens/NZ First on 58 seats. The final result was 64 seats cf. 57 seats.

New Zealand Roy Morgan Government Confidence Rating down in September

The Roy Morgan Government Confidence Rating decreased slightly, down 2pts to 137pts in September with 62% of NZ electors (down 0.5% from August) saying NZ is 'heading in the right direction' cf. 25% of NZ electors (up 1.5%) that say New Zealand is 'heading in the wrong direction'.

Gary Morgan, Executive Chairman of Roy Morgan Research, says the Maori Party's positive reaction to new Labour Leader Jacinda Ardern looks to be decisive in an election finally balanced between Labour/Greens and National/NZ First/Act NZ:

"The momentum in New Zealand's election campaign is clearly with the Labour Party led by new Leader Jacinda Ardern – and Labour on 39.5% - up 7% since early August are now virtually level with governing National on 40% - down 2.5% over the past month.

“However, the narrow gap between the major parties means the final outcome of the election will be decided by the second string parties – and it is here that Labour has a decisive edge.

“Labour’s natural allies the Greens have held steady on 9% over the past month following the resignation of former leader Metiria Turei while the vow by Labour Leader Jacinda Ardern to cut New Zealand’s net immigration by up to 30,000 appears to have significantly dented support for the traditionally anti-immigration New Zealand First – down 5.5% in a month to 6%.

“Today’s in-depth examination of the concerns of New Zealanders show electors continue to regard Poverty and the gap between rich and poor (16%) and the housing issues of House prices & Housing affordability (16%) and Housing shortages & Homelessness (10%) as the key issues the new Government needs to tackle.

“Ardern’s vow to tackle housing issues by removing ‘speculators unfair tax advantages’, ‘stopping foreign buyers who have no interest in New Zealand buying existing homes’, ‘getting on and building more houses’ – at least 10,000 extra houses a year and cutting New Zealand’s net annual immigration by up to 30,000 people per year address all the key issues and since becoming Leader Labour has taken support from National (down 3% since July), Greens (down 4.5%) and New Zealand First (down 2%).

“However despite this momentum, today’s final Roy Morgan New Zealand poll of the election shows the election result is likely to be tight with a Labour/Greens coalition needing Maori Party support to hold a clear majority in Parliament. Based on today’s figures a Labour/Greens/Maori Party coalition is projected to hold 62 seats in the 120 seat Parliament compared to 58 seats for National/New Zealand First/Act NZ.”

Electors were asked: *“If a New Zealand Election were held today which party would receive your party vote?”* This latest New Zealand Roy Morgan Poll on voting intention was conducted by telephone – both landline and mobile – with a NZ wide cross-section of 866 electors during August 28 – September 10, 2017. Of all electors surveyed 5% (down 1.5%) didn’t name a party.

For further information:

Contact	Office	Mobile
Gary Morgan:	+61 3 9224 5213	+61 411 129 094
Michele Levine:	+61 3 9224 5215	+61 411 129 093

Margin of Error

The margin of error to be allowed for in any estimate depends mainly on the number of interviews on which it is based. The following table gives indications of the likely range within which estimates would be 95% likely to fall, expressed as the number of percentage points above or below the actual estimate. The figures are approximate and for general guidance only, and assume a simple random sample. Allowance for design effects (such as stratification and weighting) should be made as appropriate.

Sample Size	Percentage Estimate			
	40%-60%	25% or 75%	10% or 90%	5% or 95%
1,000	±3.2	±2.7	±1.9	±1.4
1,500	±2.6	±2.2	±1.5	±1.1

Projected 2017 New Zealand Election Seat Breakdown

<u>ELECTION RESULTS</u>	<u>National</u>	<u>Labour</u>	<u>Green Party</u>	<u>NZ First</u>	<u>Maori Party*</u>	<u>Act NZ</u>	<u>United Future</u>	<u>Conservatives*</u>	<u>Other</u>
	%	%	%	%	%	%	%	%	%
2005 NZ ELECTION									
September 17, 2005	39.10	41.10	5.30	5.72	2.12	1.51	2.67	n/a	2.48
SEATS	48	50	6	7	4	2	3	n/a	1
61-60									
2008 NZ ELECTION									
November 8, 2008	44.93	33.99	6.72	4.07	2.39	3.65	0.87	n/a	3.38
SEATS	58	43	9	0	5	5	1	n/a	1
69-53									
2011 NZ ELECTION									
November 26, 2011	47.31	27.48	11.06	6.59	1.43	1.07	0.60	2.65	1.81
SEATS	59	34	14	8	3	1	1	0	0
64-57									
2014 NZ ELECTION									
September 20, 2014	47.04	25.13	10.70	8.66	1.32	0.69	0.22	3.97	2.27
SEATS	60	32	14	11	2	1	1	0	0
64-57									
ROY MORGAN NZ POLL									
Aug 28 – Sep 10, 2017	40	39.5	9	6	2	0.5	0	0.5	2.5
PROJECTED SEATS:	50	49	11	7	2	1	0	0	0
62-58									
GOVERNING COALITIONS:									

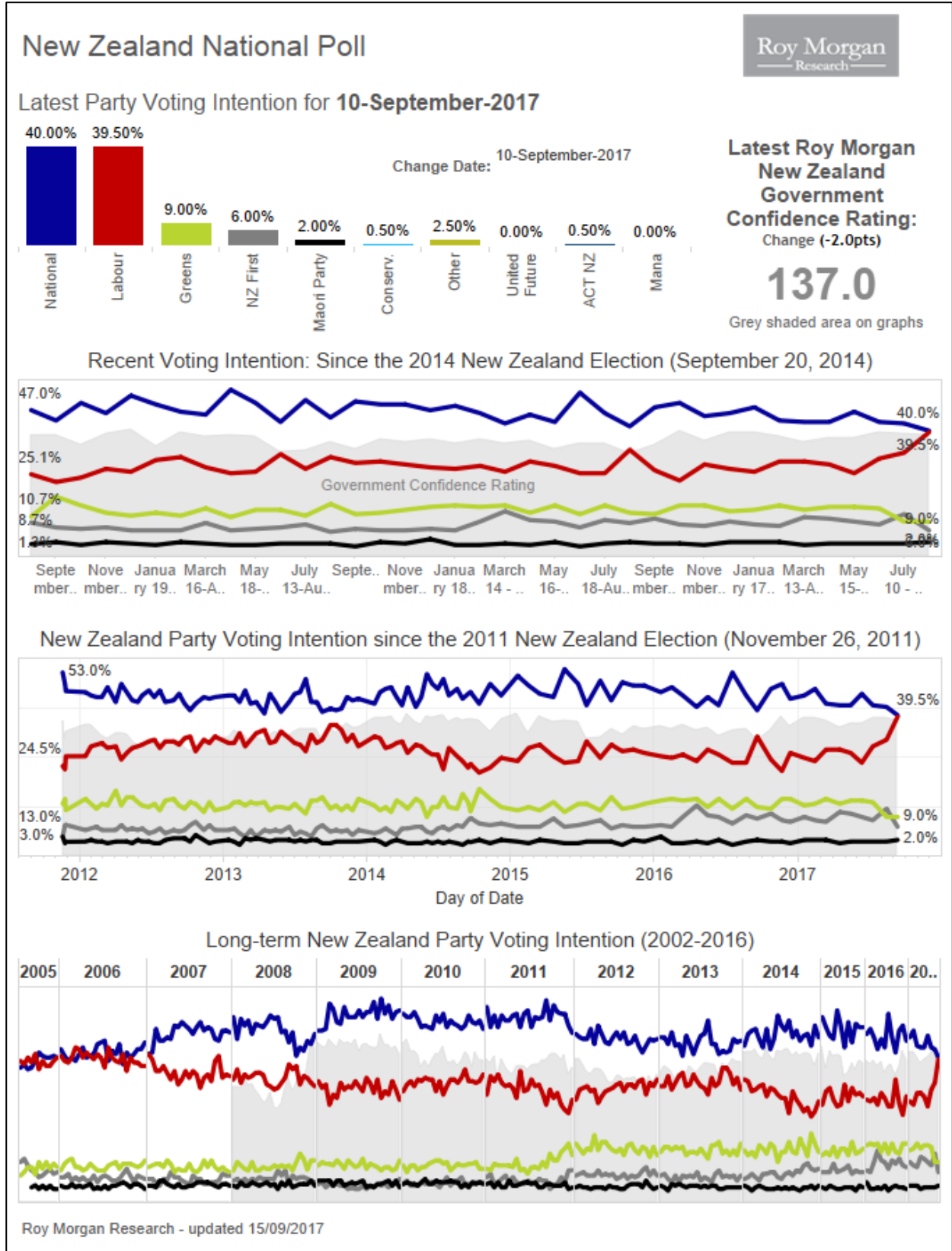
FOR IMMEDIATE RELEASE

Roy Morgan New Zealand Interactive Voting Charts

These interactive charts allow a deeper look at voting patterns in New Zealand over varying timeframes and provide election observers with the ability to pinpoint key turning points for the political parties.

[View interactive New Zealand Election charts here.](#)

Purchase the latest Roy Morgan [New Zealand Electorate Profiles.](#)



Voting Intention Summary

The following table compares the latest New Zealand Roy Morgan Polls on Voting Intention with the result from the September 20, 2014 General Election:

PARTY VOTE ELECTIONS	National	Labour	Green Party*	NZ First	Maori Party*	ACT NZ	United Future*	Conserva tives*	Other
	%	%	%	%	%	%	%	%	%
October 12, 1996*	33.87	28.19	10.10	13.35	n/a	6.10	0.88	n/a	7.51
November 27, 1999	30.50	38.74	5.16	4.26	n/a	7.04	1.66	n/a	12.64
July 27, 2002	20.93	41.26	7.00	10.38	n/a	7.14	6.69	n/a	6.60
September 17, 2005	39.10	41.10	5.30	5.72	2.12	1.51	2.67	n/a	2.48
November 8, 2008	44.93	33.99	6.72	4.07	2.39	3.65	0.87	n/a	3.38
November 26, 2011	47.31	27.48	11.06	6.59	1.43	1.07	0.60	2.65	1.81
September 20, 2014	47.04	25.13	10.70	8.66	1.32	0.69	0.22	3.97	2.27
ROY MORGAN POLL									
Sep 29-Oct 12, 2014	43.5	22.5	17.5	7	2	0.5	0.5	5	1.5
Oct 27-Nov 9, 2014	49.5	24	14.5	6.5	1	0.5	^	2	2
Nov 24-Dec 7, 2014	46	27	12	7	2	1.5	^	2.5	2
January 5-18, 2015	52	26	11	6	1.5	1	^	2	0.5
February 2-15, 2015	49	30	12	6	1	^	^	1.5	0.5
March 2-15, 2015	46.5	31	11	6	2	1	^	1.5	1
April 6-19, 2015	45.5	27.5	13.5	8.5	1.5	1	^	1	1.5
May 4-17, 2015	54	25.5	10.5	6	1	1	^	1	1
June 8-21, 2015	49.5	26	13	6.5	1	1	^	1	2
June 29-July 12, 2015	43	32	13	7	1.5	0.5	^	1.5	1.5
August 3-16, 2015	50.5	27	11	8	1.5	0.5	^	^	1.5
Aug 31-Sep 13, 2015	44.5	31	15	5.5	1.5	0.5	0.5	1	0.5
Sep 28-Oct 11, 2015	50	29	11.5	6.5	0.5	0.5	^	0.5	1.5
Oct 26-Nov 8, 2015	49	29.5	12	6	2	0.5	^	0.5	0.5
Nov 23-Dec 6, 2015	49	28.5	13	6	1.5	0.5	0.5	0.5	0.5
Jan 4-17, 2016	47	27.5	14	6.5	3	0.5	^	1	0.5
Feb 1-14, 2016	48.5	27	14.5	6	1	0.5	^	1	1.5
Feb 29-Mar 13, 2016	46	28	14	9	1	1	^	0.5	0.5
April 4-17, 2016	42.5	26	14.5	12.5	1.5	1.5	^	1	0.5
May 2-15, 2016	45.5	29.5	12	9.5	1	1	^	0.5	1
May 30-June 12, 2016	43	28	14.5	9	2	0.5	^	1	2
July 4-17, 2016	53	25.5	11.5	7	0.5	1	^	0.5	1
August 8-21, 2016	46	25.5	14.5	9.5	1.5	1	^	1	1
Sep 5-18, 2016	41.5	33.5	12	8.5	2	1	^	0.5	1
Oct 10-23, 2016	48	26.5	11.5	10	1.5	0.5	^	^	2
Nov 7-20, 2016	49.5	23	14.5	8	1.5	1	0.5	0.5	1.5
Nov 28-Dec 11, 2016	45	28.5	14.5	7.5	1	0.5	0.5	0.5	2
January 3 -16, 2017	46	27	12.5	9	2	0.5	0.5	0.5	2
Jan 30 - Feb 12, 2017	48	26	13	8	2	1	^	^	2
Feb 27-March 12, 2017	43.5	29.5	14.5	7.5	2	0.5	0.5	0.5	1.5
April 3-16, 2017	43	29.5	13	10.5	1	1.5	^	0.5	1
May 1-14, 2017	43	28.5	14	10	1.5	0.5	^	^	2.5
May 29-June 11, 2017	46.5	25.5	14	9	1.5	1	^	^	2.5
June 26-July 9, 2017	43	30.5	13.5	8	1.5	1	^	^	2.5
July 31-Aug 13, 2017	42.5	32.5	9	11.5	1.5	0.5	^	^	2.5
Aug 28-Sep 10, 2017	40	39.5	9	6	2	0.5	^	0.5	2.5

^Result less than 0.5%. *The 1996 Election was the first New Zealand Election contested via MMP (Mixed Member Proportional). At the 1996 Election the Greens Party contested as part of the "Alliance" political grouping with four other political parties. *United Future was formed via a merger in 2000 between the United Party and the Future New Zealand Party, which separately contested the 1999 Election. *The Maori Party was launched in July 2004. The Conservative Party was launched in August 2011.

Two-Party Preferred: National Party-led Government vs. Parliamentary Opposition Parties

The following table compares the latest New Zealand Roy Morgan Polls on Voting Intention with the result from the September 20, 2014 General Election:

	National Party-led Government*	Parliamentary Opposition Parties#
Election, November 8, 2008	51.84	48.16
Election, November 26, 2011	50.41	46.21
Election, September 20, 2014	49.27	44.49
<u>ROY MORGAN POLL</u>		
September 29 – October 12, 2014	46.5	47
October 27 – November 9, 2014	51	45
November 24 – December 7, 2014	49.5	46
January 5-18, 2015	54.5	43
February 2-15, 2015	50	48
March 2-15, 2015	49.5	48
April 6-19, 2015	48	49.5
May 4-7, 2015	56	42
June 8-21, 2015	51.5	45.5
June 29-July 12, 2015	45	52
August 3-16, 2015	52.5	46
Aug 31-Sep 13, 2015	47	51.5
Sep 28-Oct 11, 2015	51	47
Oct 26-Nov 8, 2015	51.5	47.5
Nov 23-Dec 6, 2015	51.5	47.5
Jan 4-17, 2016	50.5	48
Feb 1-14, 2016	50	47.5
Feb 29 – Mar 13, 2016	48	51
April 4-17, 2016	45.5	53
May 2-15, 2016	47.5	51
May 30-June 12, 2016	45.5	51.5
July 4-17, 2016	54.5	44
Aug 8-21, 2016	48.5	49.5
Sep 5-18, 2016	44.5	54
Oct 10-23, 2016	50	48
Nov 7-20, 2016	52.5	45.5
Nov 28-Dec 11, 2016	47	50.5
January 3-16, 2017	49	48.5
Jan 30-Feb 12, 2017	51	47
Feb 27-Mar 12, 2017	46.5	51.5
April 3-16, 2017	45.5	53
May 1-14, 2017	45	52.5
May 29-June 11, 2017	49	48.5
June 26-July 9, 2017	45.5	52
July 31-Aug 13, 2017	44.5	53
Aug 28-Sep 10, 2017	42.5	54.5

*National-led Government: National Party, Maori Party, ACT NZ, United Future; #Opposition Parties: Labour Party, Green Party, NZ First. Parties not represented: Conservative Party is not included as they are not represented in Parliament.

Finding No. 7339 taken from Computer Report No. 2440

The Roy Morgan Poll is conducted by the **ONLY** Australian and NZ member of the Gallup International Association.

No other public opinion poll taken in Australia or New Zealand has this qualification.

NEW ZEALAND: HEADING IN “RIGHT” OR “WRONG” DIRECTION?

Electors were asked: “Generally speaking, do you feel that things in New Zealand are heading in the right direction or would you say things are seriously heading in the wrong direction?”

NZ Roy Morgan Government Confidence Rating: Interviewing Dates (National Party Govt.)

	Sep 29-Oct 12, <u>2014</u>	Oct 27-Nov 9, <u>2014</u>	Nov 24-Dec 7, <u>2014</u>	Jan 5-18, <u>2015</u>	Feb 2-15, <u>2015</u>	Mar 2-15, <u>2015</u>	April 6-19, <u>2015</u>
	%	%	%	%	%	%	%
Right direction	61.5	56	62.5	67	55	64.5	62
Wrong direction	24.5	30	24.5	23	31	24	27
Roy Morgan GCR#	137	126	138	144	124	140.5	135
Can't say	14	14	13	10	14	11.5	11
TOTAL	100	100	100	100	100	100	100

NZ Roy Morgan Government Confidence Rating: Interviewing Dates (National Party Govt.)

	May 4-17, <u>2015</u>	June 8-21, <u>2015</u>	June 29-July 12, <u>2015</u>	Aug 3-16, <u>2015</u>	Aug 31-Sep 13, <u>2015</u>	Sep 28-Oct 11, <u>2015</u>	Oct 26- Nov 8, <u>2015</u>
	%	%	%	%	%	%	%
Right direction	63	62.5	51	54	58	53	60
Wrong direction	26.5	27	33	34	29.5	31	28.5
Roy Morgan GCR#	136.5	135.5	118	120	128.5	122	131.5
Can't say	11	10.5	16	12	12.5	16	11.5
TOTAL	100	100	100	100	100	100	100

NZ Roy Morgan Government Confidence Rating: Interviewing Dates (National Party Govt.)

	Nov 23-Dec 6, <u>2015</u>	Jan 4-17, <u>2016</u>	Feb 1-14, <u>2016</u>	Feb 29-Mar 13, <u>2016</u>	Apr 4-17, <u>2016</u>	May 2-15, <u>2016</u>	May 30-June 12, <u>2016</u>	Jul 4-17 <u>2016</u>
	%	%	%	%	%	%	%	%
Right direction	59.5	59.5	56.5	61	57.5	59	54.5	57.5
Wrong direction	31	28	28.5	29	30.5	29	34	30.5
Roy Morgan GCR#	128.5	131.5	128	132	127	130	120.5	127
Can't say	9.5	12.5	15	10	12	12	11.5	12
TOTAL	100	100	100	100	100	100	100	100

NZ Roy Morgan Government Confidence Rating: Interviewing Dates (National Party Govt.)

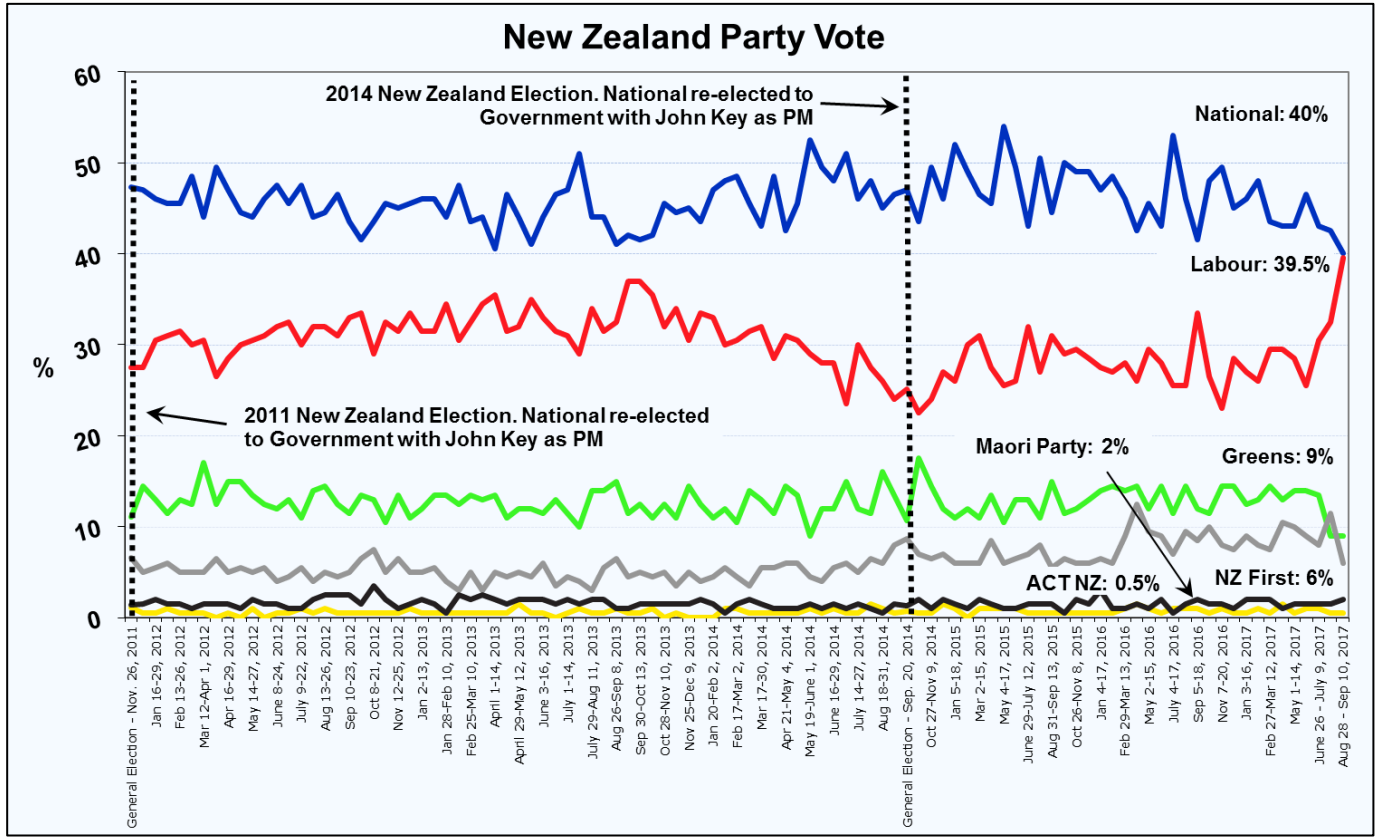
	Aug 8-21, <u>2016</u>	Sep 5-18, <u>2016</u>	Oct 10-23, <u>2016</u>	Nov 7-20, <u>2016</u>	Nov 28-Dec 11, <u>2016</u>	Jan 3-16, <u>2017</u>	Jan 30-Feb 12, <u>2017</u>
	%	%	%	%	%	%	%
Right direction	58	52	55.5	65	58.5	63	63.5
Wrong direction	30.5	35	29	24	27.5	23	23.5
Roy Morgan GCR#	127.5	117	126.5	141	131	140	140
Can't say	11.5	13	15.5	11	14	14	13
TOTAL	100	100	100	100	100	100	100

NZ Roy Morgan Government Confidence Rating: Interviewing Dates (National Party Govt.)

	Feb 27-Mar 12, <u>2017</u>	April 3-16, <u>2017</u>	May 1-14, <u>2017</u>	May 29-Jun 11, <u>2017</u>	Jun 26-Jul 9, <u>2017</u>	July 31-Aug 13, <u>2017</u>	Aug 28-Sep 10, <u>2017</u>
	%	%	%	%	%	%	%
Right direction	61.5	58	60.5	61.5	63	62.5	62
Wrong direction	25.5	29	27	27	23.5	23.5	25
Roy Morgan GCR#	136	129	133.5	134.5	139.5	139	137
Can't say	13	13	12.5	11.5	13.5	14	13
TOTAL	100	100	100	100	100	100	100

FOR IMMEDIATE RELEASE

New Zealand Party Vote



New Zealand Roy Morgan GCR

