

ANZ-Roy Morgan Australian Consumer Confidence Media Release

1 September 2020



This is not personal advice.
It does not consider your
objectives or circumstances.
Please refer to the
Important Notice.

Contributors

David Plank
Head of Australian
Economics
+61 2 8037 0029
David.Plank@anz.com

Shaurya Mishra
Junior Economist
+91 80 6795 0463
Shaurya.Mishra@anz.com

Contact
research@anz.com
Follow us on Twitter
@ANZ_Research

Series available at **Bloomberg**
AU: ALLX AUANZ <GO>
NZ: ALLX NZANZ <GO>

Previous reports available to
subscribers on [ANZ Live](#)

Confidence drops

- Consumer confidence declined 2.7% last week, after registering one of the highest increases in the last three months in the previous reading. The decline was broad-based with all subindices in negative territory.
- 'Current finances' declined 2.5%, while 'future finances' contracted by 2.7%.
- 'Current economic conditions' declined by 3.6%, while 'future economic conditions' lost 2.7%.
- 'Time to buy a household item' fell 2.4% last week after gaining 6.4% previously. The four-week moving average for 'inflation expectations' increased by 0.1ppt to 3.3% as the weekly reading came in at 3.6% – its highest weekly level since April.

ANZ-Roy Morgan Consumer Confidence and inflation expectations

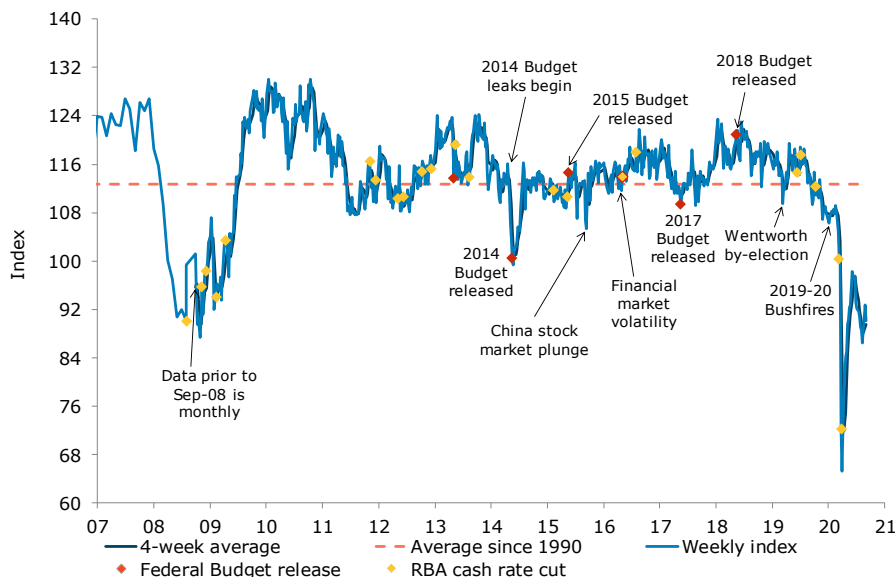
Last weekend (29–30 Aug)	Weekly change, %	Four-week average	Monthly average since 1990	Inflation expectations (four-week ma)
90.2	-2.7%	89.5	112.7	3.3%

This weekly ANZ-Roy Morgan Australian Consumer Confidence Rating is based on 1,511 interviews conducted online and over the telephone on the weekend. Not seasonally adjusted. Further data history on page 6.

ANZ Head of Australian Economics, David Plank, commented:

Confidence declined last week, after two successive gains. The weakness was predominantly due to declines outside of Victoria and New South Wales. Confidence is now below the neutral level of 100 in all the major cities. Encouragingly, confidence actually rose in Victoria. The continued drop in new COVID-19 cases in Melbourne may be giving hope that the severity of the lockdown can be eased as planned. There is still work to be done, however. In the meantime, confidence may be challenged by the expected confirmation this week that Australia's economy contracted at a record rate in the second quarter.

Confidence declined 2.7%

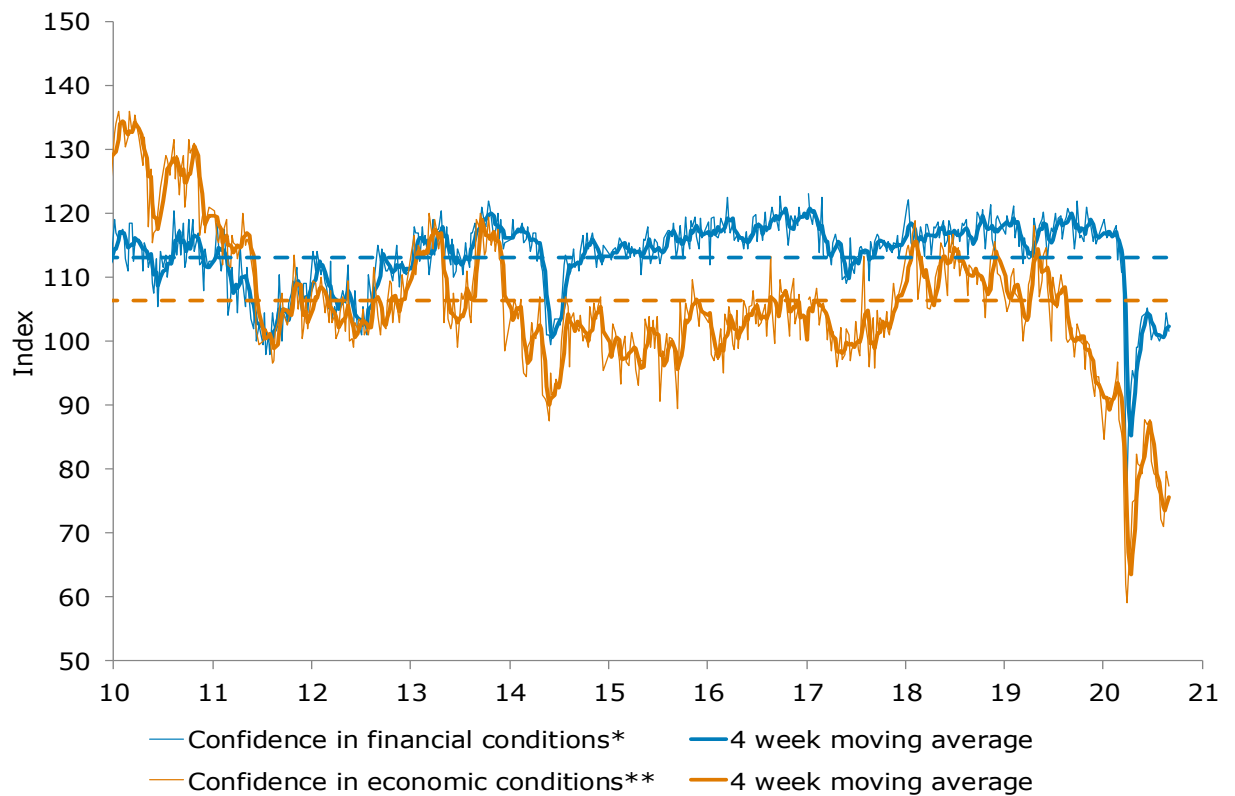


Source: ANZ-Roy Morgan, ANZ Research



Charts

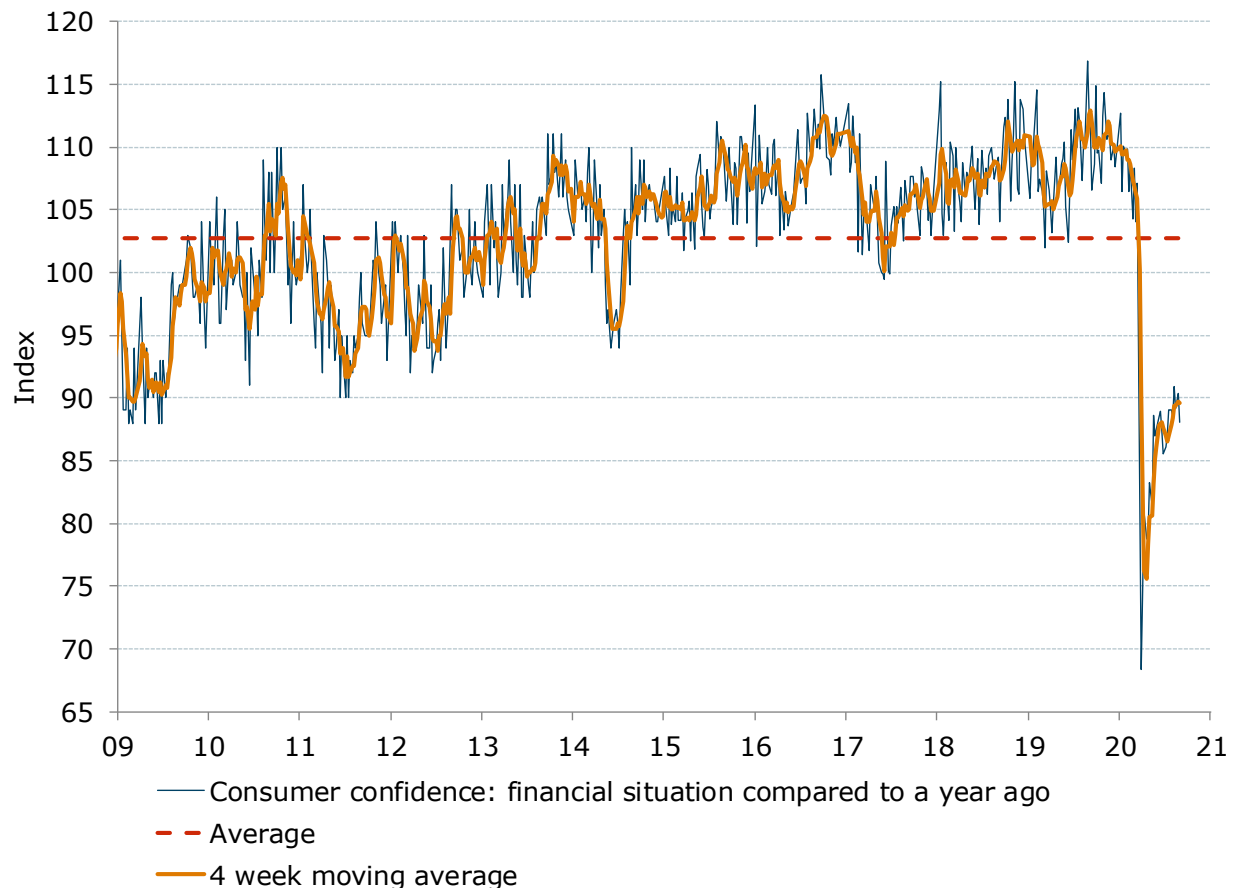
Figure 1. Financial and economic conditions decline simultaneously



Source: ANZ-Roy Morgan

Note: *Financial conditions index is an average of 'financial situation compared to a year ago' and 'financial situation next year' sub-indices. **Economic conditions index is an average of 'economic conditions in 12 months' and 'economic conditions in five years' sub-indices.

Figure 2. 'Current financial conditions' declined by 2.5%

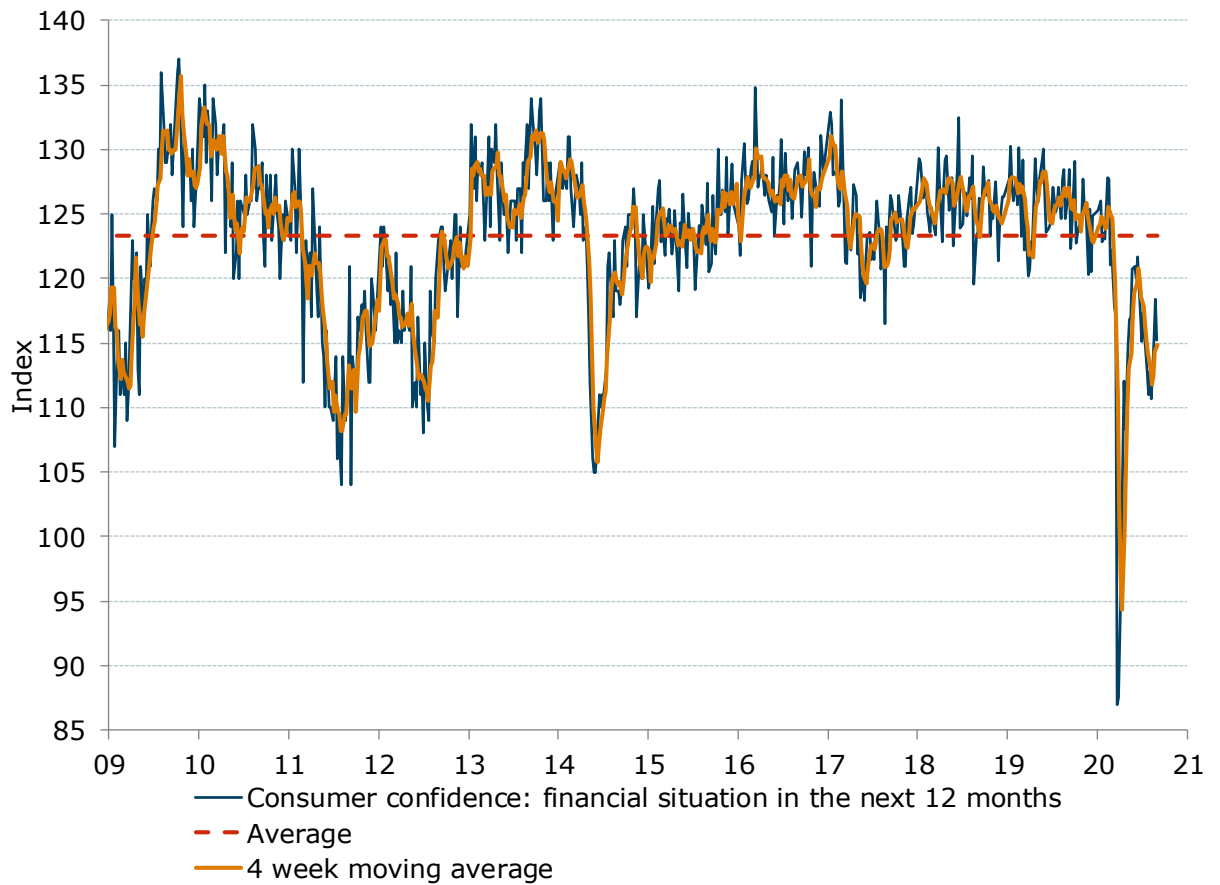


Source: ANZ-Roy Morgan



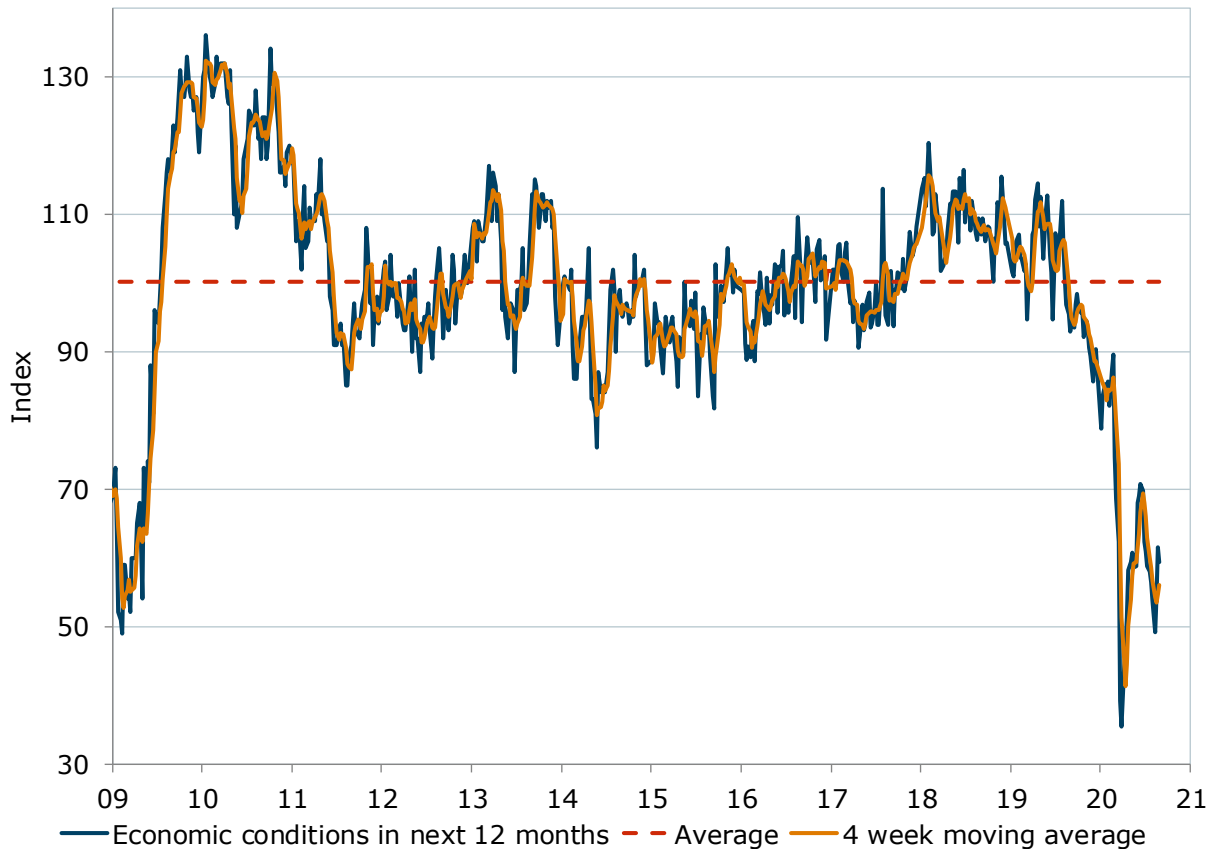
Charts

Figure 3. 'Future financial conditions' also declined



Source: ANZ-Roy Morgan

Figure 4. 'Current economic conditions' declined by 3.6% after gaining 13.1% in the previous week

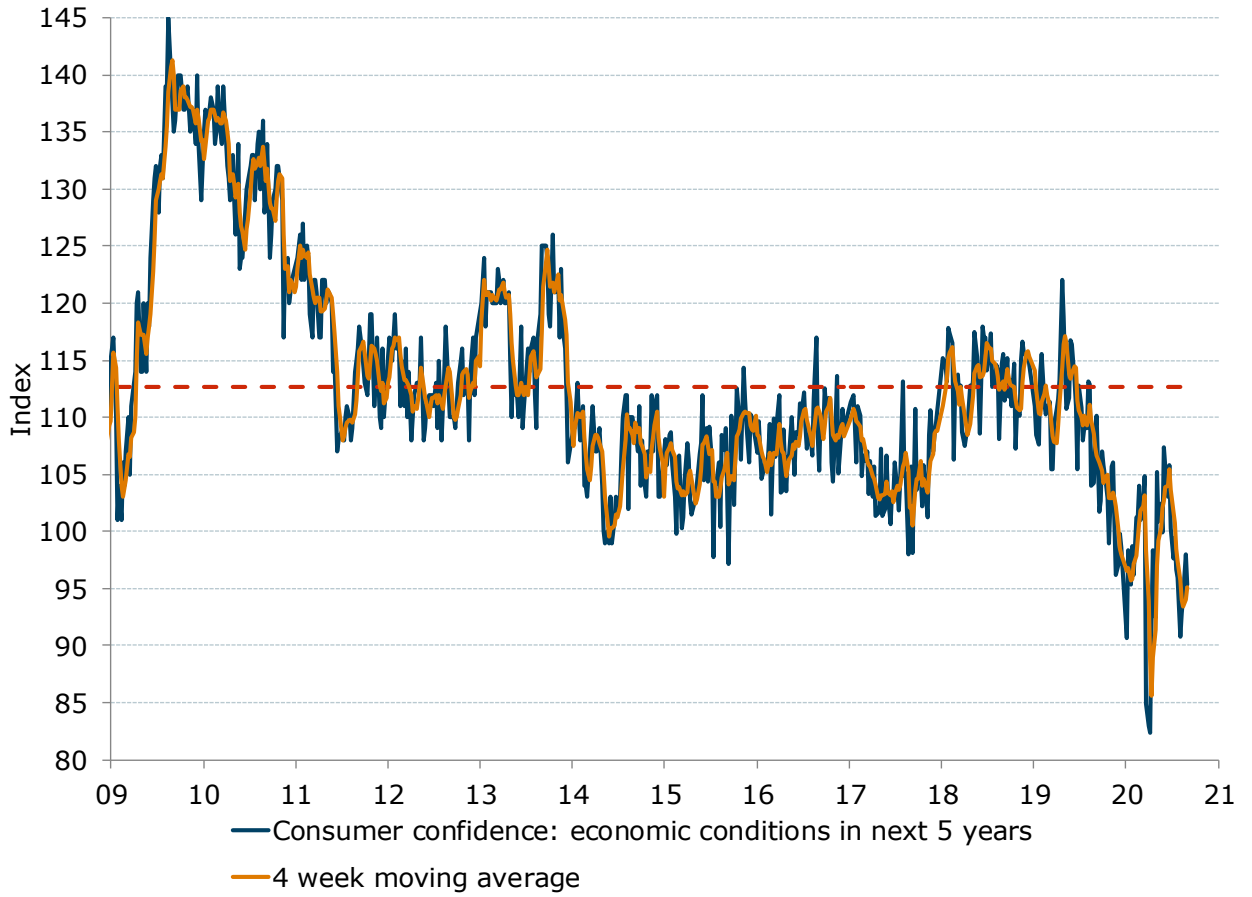


Source: ANZ-Roy Morgan



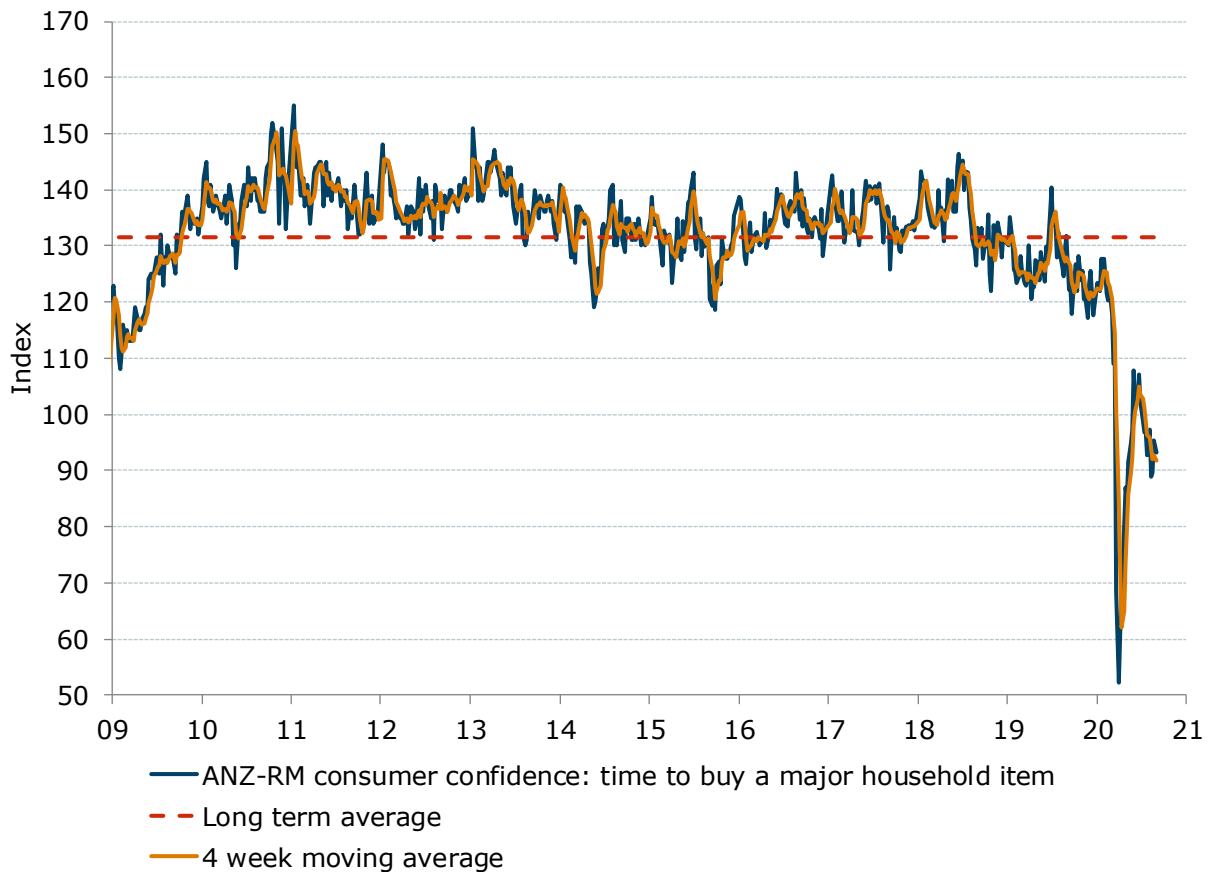
Charts

Figure 5. 'Future economic conditions' also declined, after three straight weeks of gain



Source: ANZ-Roy Morgan

Figure 6. 'Time to buy a household item' fell 2.4%

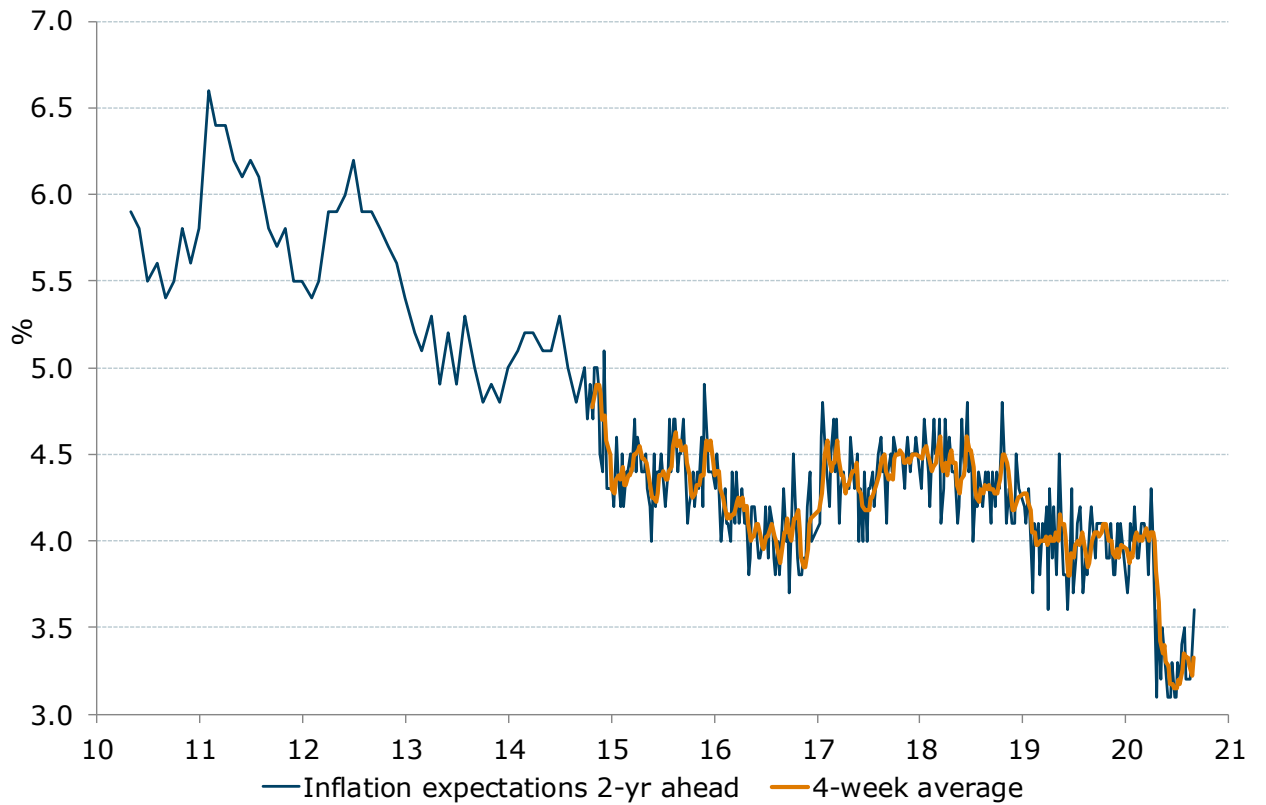


Source: ANZ-Roy Morgan



Charts

Figure 7. 'Inflation expectations' increased by 0.1ppt to 3.3% (four-week moving average)



* Data from Oct-2014 is weekly.
Data prior to that is monthly.

Source: ANZ-Roy Morgan



Data table

Table 1. ANZ-Roy Morgan Australian Consumer Confidence

	Headline index		Subindices				Inflation expectations	
	Last week	4-week moving average	1. Financial situation compared to a year ago	2. Financial situation next year	3. Economic conditions next year	4. Economic conditions next 5 years	5. Time to buy a major household item	6. Inflation expectations 2-year ahead (%)
Avg since 2001	115	-	103	124	104	113	133	-
2011 avg	114	-	97	117	101	116	140	6.0
2012 avg	113	-	99	118	97	113	138	5.8
2013 avg	119	-	104	128	106	118	139	5.0
2014 avg	111	-	104	121	94	106	132	4.9
2015 avg	112	-	107	124	94	106	131	4.4
2016 avg	115	-	109	127	99	108	134	4.1
2017 avg	114	-	105	124	100	105	135	4.4
2018 avg	119	-	108	126	109	113	135	4.4
2019 avg	114	-	109	126	101	109	126	4.0
25-Aug-19	114.1	114.6	116.8	124.7	95.4	104.2	129.5	4.1
01-Sep-19	114.4	114.2	113.0	126.3	92.8	108.2	131.7	4.2
08-Sep-19	113.3	113.7	111.7	128.5	94.1	110.1	122.3	4.0
15-Sep-19	109.3	112.8	106.6	122.3	93.5	101.7	122.6	3.9
22-Sep-19	110.1	111.8	108.6	124.3	96.9	102.7	118.0	4.1
29-Sep-19	114.7	111.9	114.9	129.1	98.3	107.0	124.3	4.1
06-Oct-19	112.3	111.6	109.5	122.7	96.6	105.8	126.8	4.1
13-Oct-19	110.9	112.0	109.7	123.5	95.6	104.0	121.9	4.1
20-Oct-19	111.6	112.4	107.1	124.0	95.9	102.9	128.1	4.1
27-Oct-19	110.4	111.3	112.5	124.5	92.1	99.0	123.9	3.9
03-Nov-19	113.5	111.6	114.3	127.7	94.5	105.7	125.5	3.9
10-Nov-19	111.1	111.7	110.6	125.6	93.0	106.0	120.6	4.1
17-Nov-19	109.9	111.2	110.9	125.8	90.6	100.8	121.1	3.8
24-Nov-19	106.8	110.3	110.8	120.3	89.4	96.2	117.1	3.8
01-Dec-19	108.1	109.0	109.0	125.4	85.7	97.2	123.3	4.1
08-Dec-19	109.0	108.5	110.1	120.5	89.0	99.8	125.6	3.9
15-Dec-19	108.0	108.0	108.4	124.9	90.4	98.6	117.6	4.1
05-Jan-20	106.2	107.8	112.7	125.3	78.7	90.6	123.3	3.7
12-Jan-20	107.3	107.6	106.5	126.0	83.5	98.4	121.9	3.8
19-Jan-20	108.3	107.5	110.1	122.9	85.3	95.4	127.6	4.1
26-Jan-20	108.0	107.5	109.5	123.5	83.8	98.7	124.5	4.0
02-Feb-20	108.5	108.0	109.8	123.1	85.6	96.2	127.8	4.2
09-Feb-20	107.8	108.2	106.5	127.8	82.1	101.3	121.4	3.9
16-Feb-20	109.1	108.4	108.6	127.7	87.4	101.3	120.3	3.9
23-Feb-20	108.3	108.4	104.3	121.1	89.5	104.0	122.4	4.1
01-Mar-20	104.8	107.5	108.3	122.2	74.6	101.0	117.8	4.1
08-Mar-20	100.4	105.7	104.0	117.8	68.6	102.7	109.1	4.1
15-Mar-20	100.0	103.4	107.1	117.2	62.2	104.9	108.9	4.0
22-Mar-20	72.2	94.4	81.5	87.0	39.1	84.9	68.4	3.8
29-Mar-20	65.3	84.5	68.4	87.5	35.4	82.9	52.1	4.3
05-Apr-20	71.9	77.4	74.4	97.5	44.1	82.4	61.2	4.1
12-Apr-20	78.2	71.9	80.9	105.2	46.9	92.1	66.1	3.8
19-Apr-20	84.2	74.9	78.8	112.1	51.4	98.3	80.3	3.1
26-Apr-20	85.0	79.8	79.1	108.4	58.1	92.5	86.9	3.6
03-May-20	89.5	84.2	83.3	114.8	59.4	105.2	84.7	3.2
10-May-20	90.3	87.3	81.4	116.8	60.7	100.9	91.6	3.5
17-May-20	92.3	89.3	88.6	117.0	58.5	102.4	94.9	3.3
24-May-20	92.7	91.2	87.0	120.7	58.7	99.9	97.3	3.2
31-May-20	98.3	93.4	87.5	120.9	67.9	107.4	107.9	3.1
07-Jun-20	97.0	95.1	88.5	120.0	69.0	105.7	101.7	3.1
14-Jun-20	97.50	96.4	88.9	121.7	70.8	103.0	103.0	3.3
21-Jun-20	97.50	97.6	87.4	117.3	69.7	105.8	107.2	3.1
28-Jun-20	93.0	96.3	85.5	115.1	62.3	100.3	102.0	3.1
05-Jul-20	92.1	95.0	86.1	117.3	60.9	97.6	98.8	3.3
12-Jul-20	91.6	93.6	87.1	115.7	58.8	99.4	96.9	3.2
19-Jul-20	90.7	91.9	89.1	112.8	57.9	96.7	96.8	3.4
26-Jul-20	89.0	90.9	89.0	111.0	56.5	95.9	92.7	3.5
02-Aug-20	88.6	90.0	88.5	112.8	53.6	90.8	97.2	3.2
09-Aug-20	86.50	88.7	90.9	110.7	49.2	92.8	88.8	3.2
16-Aug-20	88.60	88.2	89.2	115.3	54.4	94.3	89.7	3.2
23-Aug-20	92.70	89.1	90.4	118.4	61.5	98.0	95.4	3.3
30-Aug-20	90.20	89.5	88.1	115.2	59.3	95.4	93.1	3.6

Source: ANZ-Roy Morgan



Important notice

[4 April 2019]

This publication is published by Australia and New Zealand Banking Group Limited ABN 11 005 357 522 ("ANZBGL") in Australia. This publication is intended as thought-leadership material. It is not published with the intention of providing any direct or indirect recommendations relating to any financial product, asset class or trading strategy.

The information in this publication is not intended to influence any person to make a decision in relation to a financial product or class of financial products. It is general in nature and does not take account of the circumstances of any individual or class of individuals. Nothing in this publication constitutes a recommendation, solicitation or offer by ANZBGL or its branches or subsidiaries (collectively "ANZ") to you to acquire a product or service, or an offer by ANZ to provide you with other products or services. All information contained in this publication is based on information available at the time of publication. While this publication has been prepared in good faith, no representation, warranty, assurance or undertaking is or will be made, and no responsibility or liability is or will be accepted by ANZ in relation to the accuracy or completeness of this publication or the use of information contained in this publication. ANZ does not provide any financial, investment, legal or taxation advice in connection with this publication.