

ANZ-Roy Morgan Australian Consumer Confidence Media Release

29 June 2021



This is not personal advice nor financial advice about any product or service. It does not take into account your financial situation or goals. Please refer to the Important Notice

Contributors

Felicity Emmett
Senior Economist
+61 481 010 724
Felicity.Emmett@anz.com

Arindam Chakraborty
Junior Economist
Arindam.Chakraborty@anz.com

Contact
research@anz.com
Follow us on Twitter
@ANZ_Research
@felicity_emmett

Series available at **Bloomberg**
AU: ALLX AUANZ <GO>
NZ: ALLX NZANZ <GO>

Previous reports available to subscribers on [ANZ Live](#)

Slight fall in confidence

- Consumer confidence remained almost steady last week with a fall of only 0.2%. The index likely did not fully capture the impact of all the various restrictions and lockdowns imposed across the states, as most of the survey was completed before the news was released.
- ‘Current financial conditions’ softened 1.3%, while ‘future financial conditions’ gained 1.4%.
- ‘Current economic conditions’ declined 3.4%, while ‘future economic conditions’ lost 1.7%.
- ‘Time to buy a major household item’ rose 3.5%. ‘Weekly inflation expectations’ fell by 0.1ppt to 4.1%, however the four-week moving average increased by 0.1ppt to 4.1%.

ANZ-Roy Morgan Consumer Confidence and inflation expectations

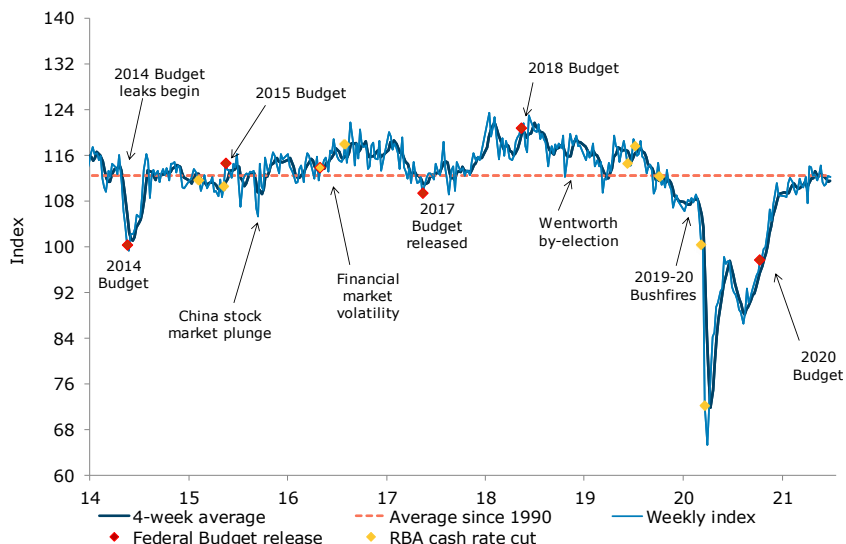
Last weekend (26-27 Jun)	Weekly change, %	Four-week average	Monthly average since 1990	Inflation expectations (four-week ma)
112.2	-0.2%	111.6	112.6	4.1%

This weekly ANZ-Roy Morgan Australian Consumer Confidence Rating is based on 1,533 interviews conducted online and over the telephone on the weekend. Not seasonally adjusted. Further data history on page 6.

ANZ Senior Economist, Felicity Emmett, commented:

Headline consumer confidence barely moved last week, dropping only 0.2% from the week before. With new COVID-19 cases rising quite rapidly in NSW over the week, confidence in Sydney fell 4.6%, while in regional NSW it fell 6.6%. The impact of this was largely offset by ongoing recovery in confidence in Melbourne and further gains in confidence elsewhere. Recent experience suggests sentiment will respond to case numbers and lockdown measures in the coming weeks: if case numbers remain high, confidence is likely to deteriorate, but if they come back under control quickly and restrictions look likely to be short-lived sentiment is likely to rebound.

Figure 1. Confidence edges 0.2% lower

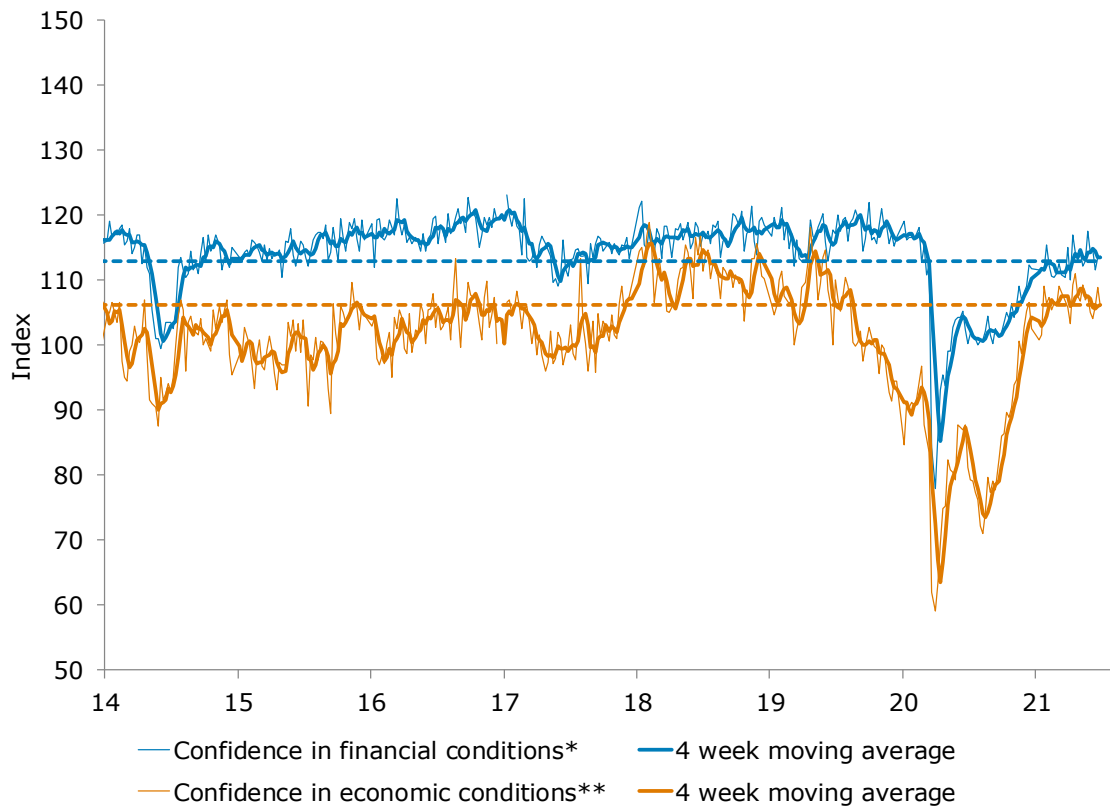


Source: ANZ-Roy Morgan, ANZ Research



Charts

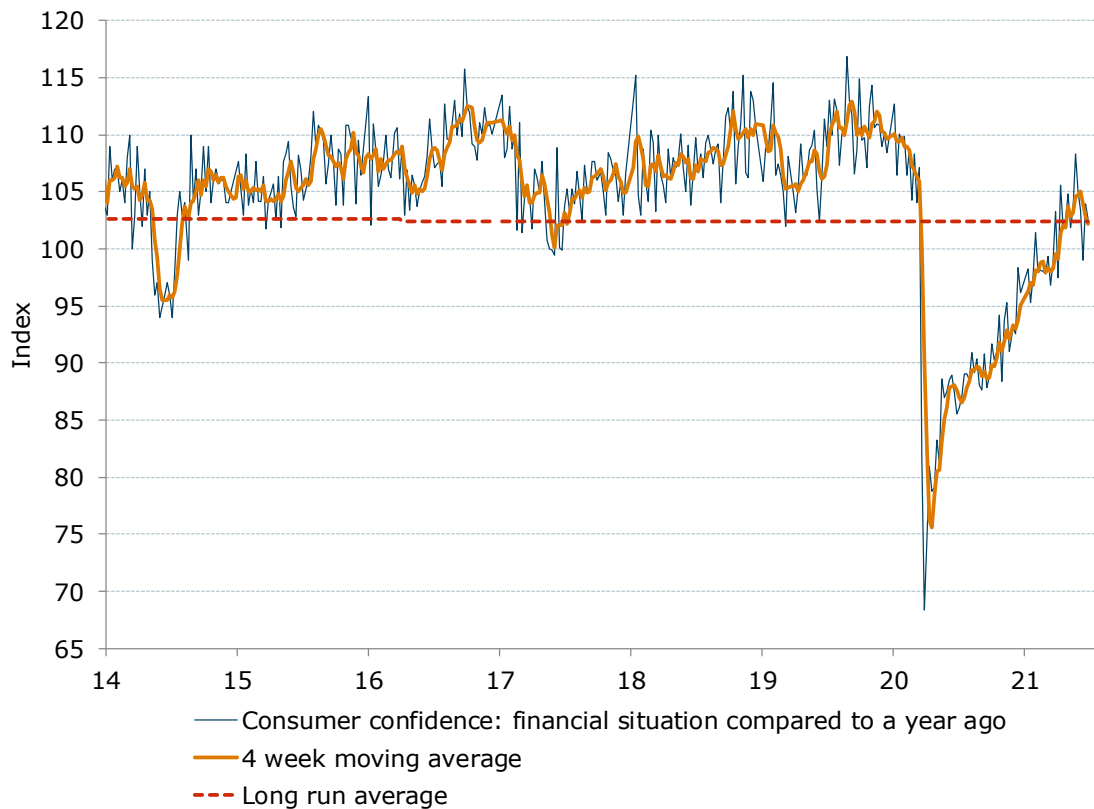
Figure 2. Economic conditions declined while financial conditions remained flat



Source: ANZ-Roy Morgan

Note: *Financial conditions index is an average of 'financial situation compared to a year ago' and 'financial situation next year' sub-indices. **Economic conditions index is an average of 'economic conditions in 12 months' and 'economic conditions in five years' sub-indices.

Figure 3. 'Current financial conditions' softened 1.3%

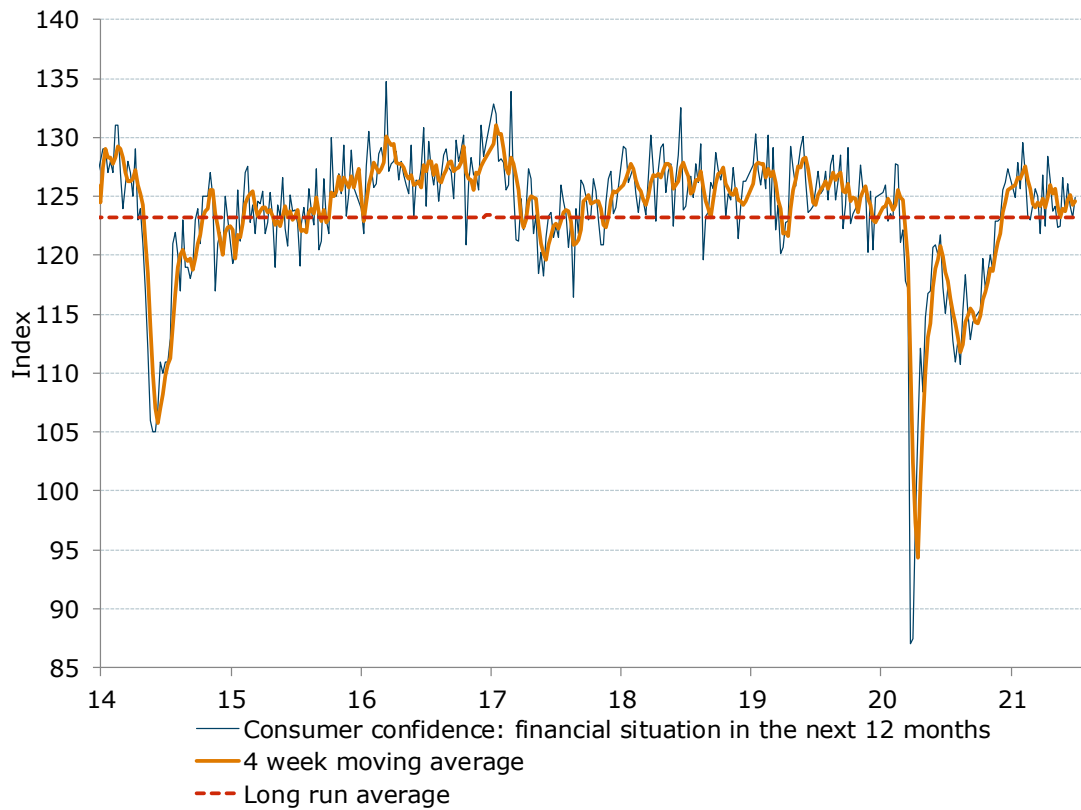


Source: ANZ-Roy Morgan



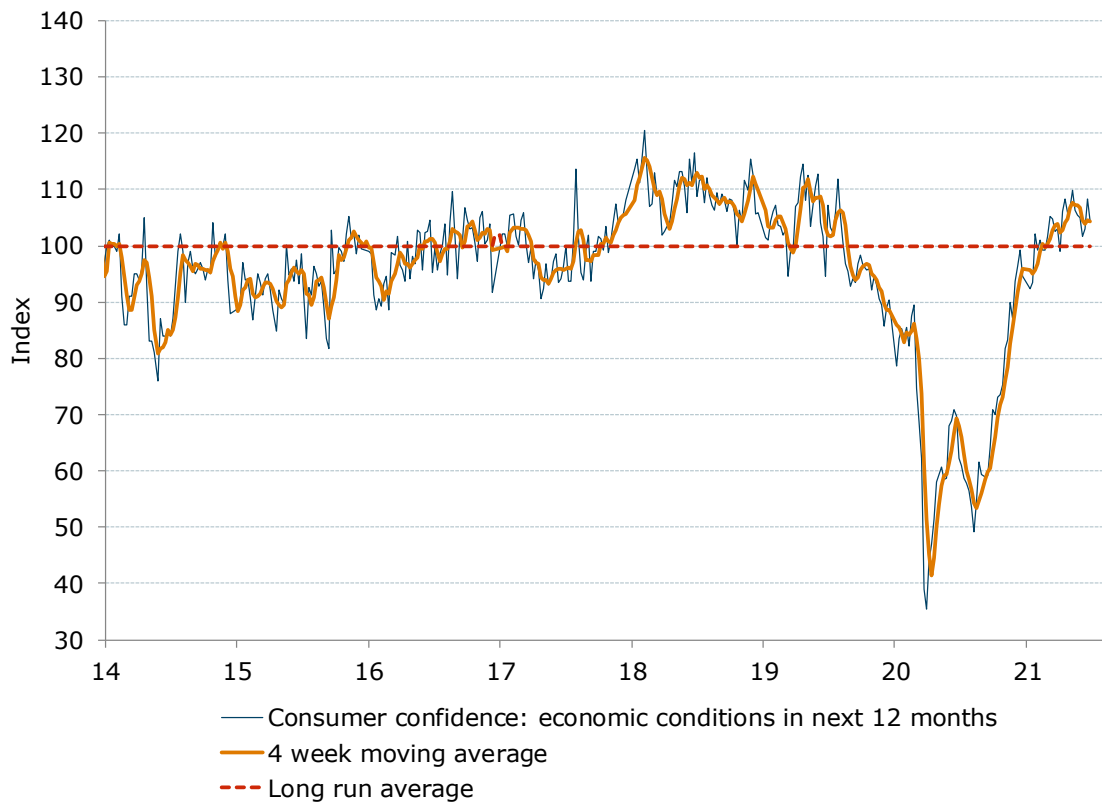
Charts

Figure 4. 'Future financial conditions' increased by 1.4%



Source: ANZ-Roy Morgan

Figure 5. 'Current economic conditions' fell 3.4%

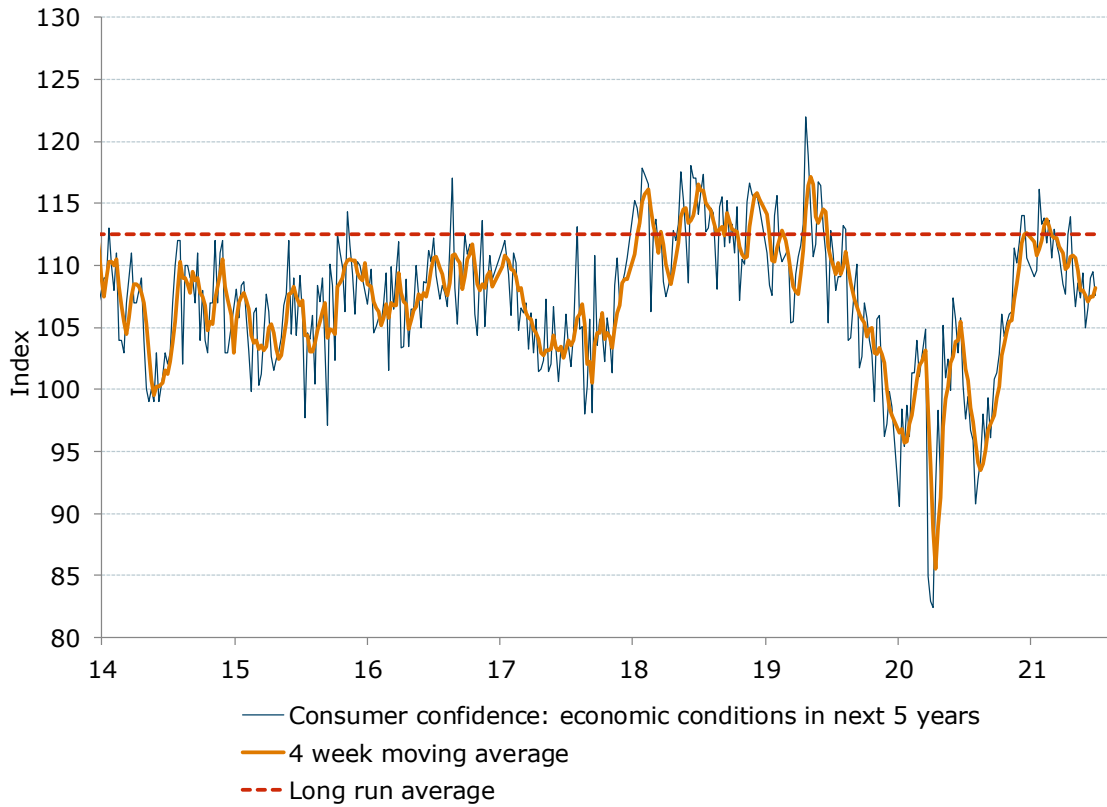


Source: ANZ-Roy Morgan



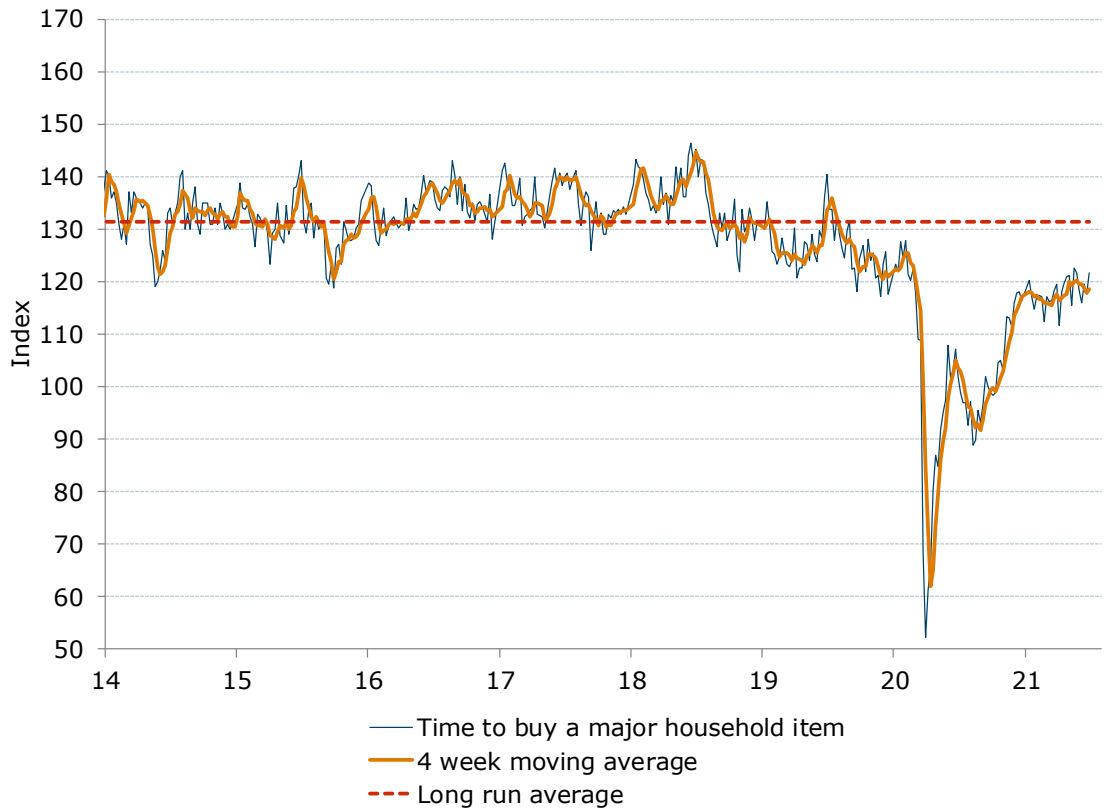
Charts

Figure 6. 'Future economic conditions' lost 1.7%



Source: ANZ-Roy Morgan

Figure 7. 'Time to buy a major household item' gained 3.5%

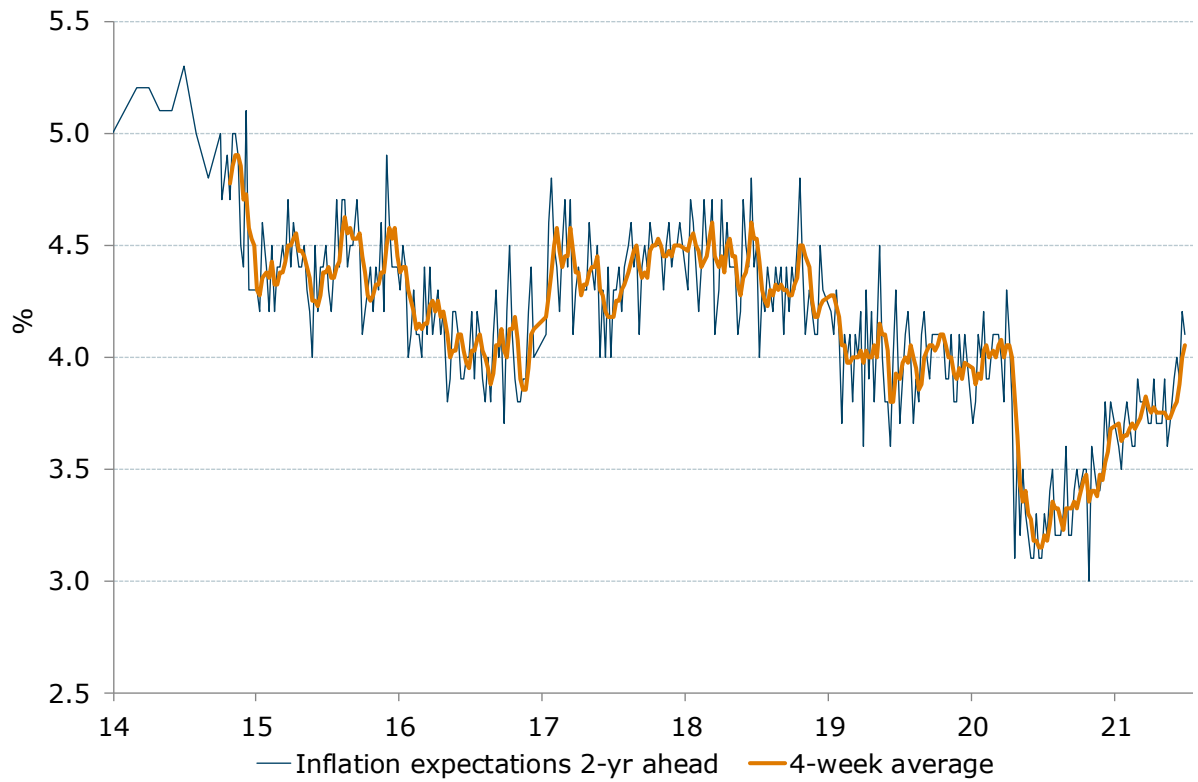


Source: ANZ-Roy Morgan



Charts

Figure 8. Weekly inflation expectations rate fell 0.1ppt to 4.1%, but the four-week moving average rose by 0.1ppt to 4.1%



* Data from Oct-2014 is weekly.
Data prior to that is monthly.

Source: ANZ-Roy Morgan



Data table

Table 1. ANZ-Roy Morgan Australian Consumer Confidence

	Headline index		Subindices				Inflation expectations	
	Last week	4-week moving average	1. Financial situation compared to a year ago	2. Financial situation next year	3. Economic conditions next year	4. Economic conditions next 5 years	5. Time to buy a major household item	6. Inflation expectations 2-year ahead (%)
Avg since 2001	115	-	102	124	103	113	132	-
2010 avg	124	-	101	127	124	130	139	5.7
2011 avg	114	-	97	117	101	116	140	6.0
2012 avg	113	-	99	118	97	113	138	5.8
2013 avg	119	-	104	128	106	118	139	5.0
2014 avg	111	-	104	121	94	106	132	4.9
2015 avg	112	-	107	124	94	106	131	4.4
2016 avg	115	-	109	127	99	108	134	4.1
2017 avg	114	-	105	124	100	105	135	4.4
2018 avg	119	-	108	126	109	113	135	4.4
2019 avg	114	-	109	126	101	109	126	4.0
7-Jun-20	97.0	95.1	88.5	120.0	69.0	105.7	101.7	3.1
14-Jun-20	97.5	96.4	88.9	121.7	70.8	103.0	103.0	3.3
21-Jun-20	97.5	97.6	87.4	117.3	69.7	105.8	107.2	3.1
28-Jun-20	93.0	96.3	85.5	115.1	62.3	100.3	102.0	3.1
5-Jul-20	92.1	95.0	86.1	117.3	60.9	97.6	98.8	3.3
12-Jul-20	91.6	93.6	87.1	115.7	58.8	99.4	96.9	3.2
19-Jul-20	90.7	91.9	89.1	112.8	57.9	96.7	96.8	3.4
26-Jul-20	89.0	90.9	89.0	111.0	56.5	95.9	92.7	3.5
2-Aug-20	88.6	90.0	88.5	112.8	53.6	90.8	97.2	3.2
9-Aug-20	86.5	88.7	90.9	110.7	49.2	92.8	88.8	3.2
16-Aug-20	88.6	88.2	89.2	115.3	54.4	94.3	89.7	3.2
23-Aug-20	92.7	89.1	90.4	118.4	61.5	98.0	95.4	3.3
30-Aug-20	90.2	89.5	88.1	115.2	59.3	95.4	93.1	3.6
6-Sep-20	91.1	90.7	87.6	112.9	58.9	99.3	96.7	3.2
13-Sep-20	92.4	91.6	90.8	114.3	59.2	96.1	101.8	3.2
20-Sep-20	93.5	91.8	87.9	114.8	64.2	100.8	99.9	3.4
27-Sep-20	95.0	93.0	88.8	115.1	70.8	101.3	98.9	3.5
4-Oct-20	95.7	94.2	91.7	115.4	70.0	102.9	98.4	3.4
11-Oct-20	97.7	95.5	90.3	119.7	73.2	106.1	98.9	3.5
18-Oct-20	98.1	96.6	91.0	117.2	73.5	104.3	104.6	3.5
25-Oct-20	99.7	97.8	94.2	118.6	75.4	105.4	105.0	3.0
1-Nov-20	99.9	98.9	88.4	120.1	81.7	106.1	103.0	3.6
8-Nov-20	103.1	100.2	93.8	118.7	83.2	106.3	113.3	3.5
15-Nov-20	106.6	102.3	95.3	122.9	90.0	111.4	113.1	3.4
22-Nov-20	104.5	103.5	91.0	122.9	87.1	110.2	111.3	3.4
29-Nov-20	107.5	105.4	93.1	123.1	93.7	111.8	116.0	3.5
6-Dec-20	109.3	107.0	92.5	125.6	96.4	114.0	117.7	3.8
13-Dec-20	111.2	108.1	98.4	126.2	99.2	114.0	118.0	3.6
20-Dec-20	109.0	109.3	96.2	127.3	94.6	110.6	116.3	3.8
10-Jan-21	108.9	109.6	98.2	124.9	92.4	109.1	120.1	3.6
17-Jan-21	108.7	109.5	95.3	127.9	93.5	109.6	117.2	3.5
24-Jan-21	111.2	109.5	97.6	125.7	102.0	116.1	114.8	3.7
31-Jan-21	112.1	110.2	101.4	129.6	99.3	113.3	117.0	3.8
7-Feb-21	111.4	110.9	97.9	126.9	101.0	113.8	117.4	3.7
14-Feb-21	109.9	111.2	98.1	123.3	99.2	111.8	117.0	3.6
21-Feb-21	109.2	110.7	98.0	123.0	99.2	113.6	112.4	3.6
28-Feb-21	110.3	110.2	97.8	124.3	101.6	110.6	117.1	3.9
7-Mar-21	111.9	110.3	99.3	125.7	105.3	112.9	116.2	3.8
14-Mar-21	110.9	110.6	96.8	125.0	104.7	111.7	116.3	3.8
21-Mar-21	110.4	110.9	98.9	121.8	102.6	110.8	118.2	3.8
28-Mar-21	112.3	111.4	103.3	126.8	103.1	108.5	119.6	3.7
4-Apr-21	107.7	110.3	97.5	122.5	99.1	107.7	111.7	3.7
11-Apr-21	114.1	111.1	105.6	128.4	106.1	112.5	118.1	3.9
18-Apr-21	114.0	112.0	102.0	126.4	108.2	113.9	119.7	3.7
25-Apr-21	112.4	112.1	102.5	123.8	105.9	109.2	120.8	3.7
2-May-21	112.7	113.3	104.8	124.2	106.8	106.7	121.1	3.7
9-May-21	111.6	112.7	101.9	122.4	109.8	108.6	115.4	3.9
16-May-21	112.5	112.3	103.5	122.5	106.4	107.4	122.5	3.6
23-May-21	114.2	112.8	108.3	126.6	105.5	109.4	121.6	3.7
30-May-21	111.4	112.4	105.0	123.6	105.0	105.0	118.4	3.9
6-Jun-21	110.7	112.2	103.4	126.1	101.7	106.6	115.8	4.0
13-Jun-21	111.0	111.8	99.0	124.2	103.1	109.0	119.6	3.9
20-Jun-21	112.4	111.4	103.9	123.2	108.2	109.5	117.5	4.2
27-Jun-21	112.2	111.6	102.6	124.9	104.5	107.6	121.6	4.1

Source: ANZ-Roy Morgan



Important notice

[4 April 2019]

This publication is published by Australia and New Zealand Banking Group Limited ABN 11 005 357 522 ("ANZBGL") in Australia. This publication is intended as thought-leadership material. It is not published with the intention of providing any direct or indirect recommendations relating to any financial product, asset class or trading strategy.

The information in this publication is not intended to influence any person to make a decision in relation to a financial product or class of financial products. It is general in nature and does not take account of the circumstances of any individual or class of individuals. Nothing in this publication constitutes a recommendation, solicitation or offer by ANZBGL or its branches or subsidiaries (collectively "ANZ") to you to acquire a product or service, or an offer by ANZ to provide you with other products or services. All information contained in this publication is based on information available at the time of publication. While this publication has been prepared in good faith, no representation, warranty, assurance or undertaking is or will be made, and no responsibility or liability is or will be accepted by ANZ in relation to the accuracy or completeness of this publication or the use of information contained in this publication. ANZ does not provide any financial, investment, legal or taxation advice in connection with this publication.