

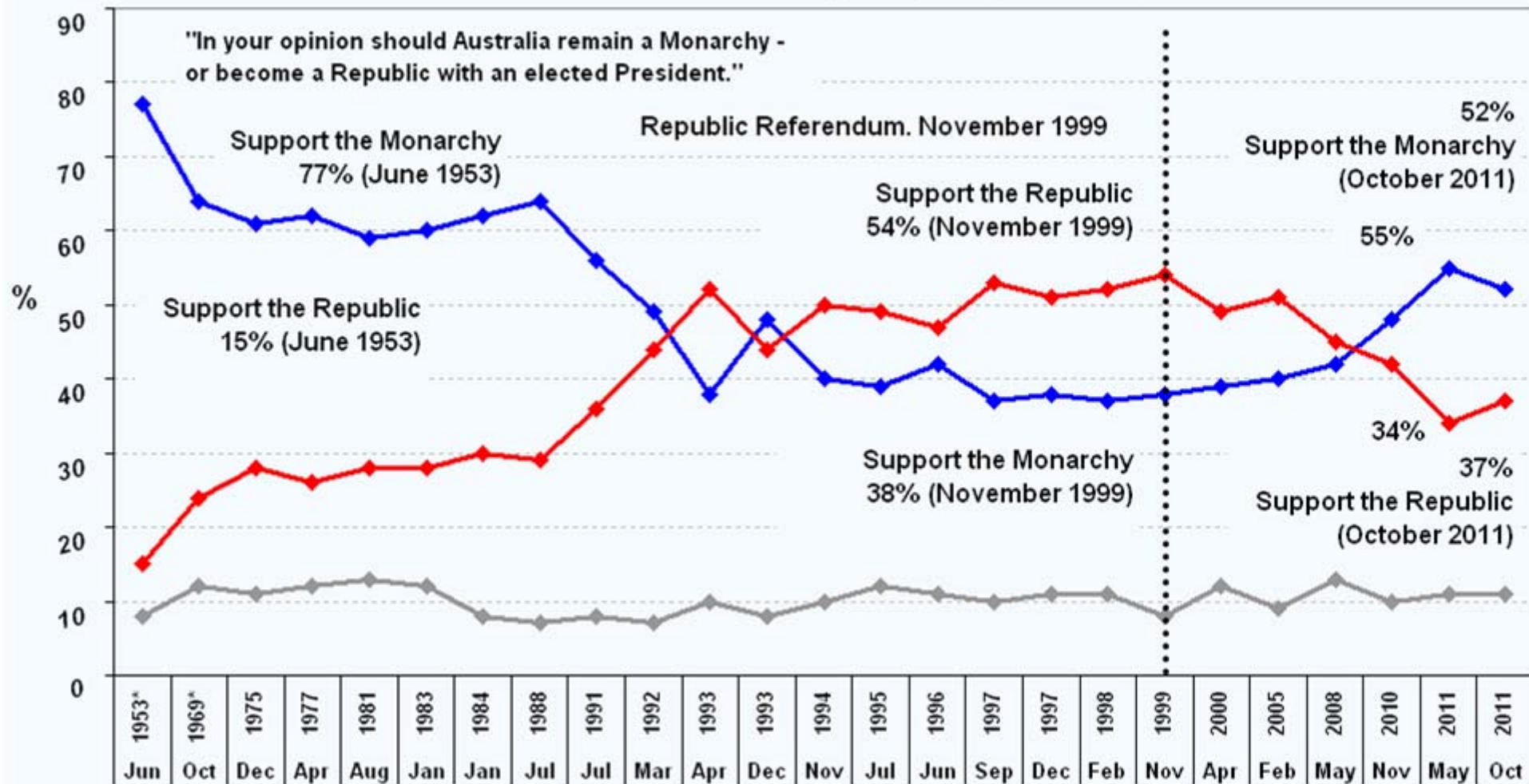
# Australia's Constitutional Future: Challenges for the Monarchy in a Global World

Presented by  
Gary Morgan and Michele Levine

**November 2011**

Please direct any queries to [enquiries@roymorganonlinestore.com](mailto:enquiries@roymorganonlinestore.com)  
Roy Morgan Research - 401 Collins Street, Melbourne VIC 3000  
Telephone: 1800 633 813  
© Roy Morgan Research

### Australian Attitudes to the Monarchy & Republic (1953 - 2011)



Royal Wedding of Prince William & Catherine Middleton - April 29, 2011 →

Visit of the Queen to Australia for CHOGM - October 19-29, 2011 ↗



## MORGAN POLL on AFGHANISTAN

### There are two questions

*“Do you think it is now time for Australian troops to be withdrawn from Afghanistan?”*

72% said “Yes, withdraw”

21% said, “No, don’t withdraw”

*“Is it now time for US troops to be withdrawn from Afghanistan?”*

63% said “Yes, withdraw”

23% said “No, don’t withdraw”

## MORGAN POLL on QANTAS

*“Who DO YOU personally blame for the grounding of Qantas planes last weekend?  
Qantas Management or the Unions?”*

56% said “Qantas Management”

42% said “Unions”

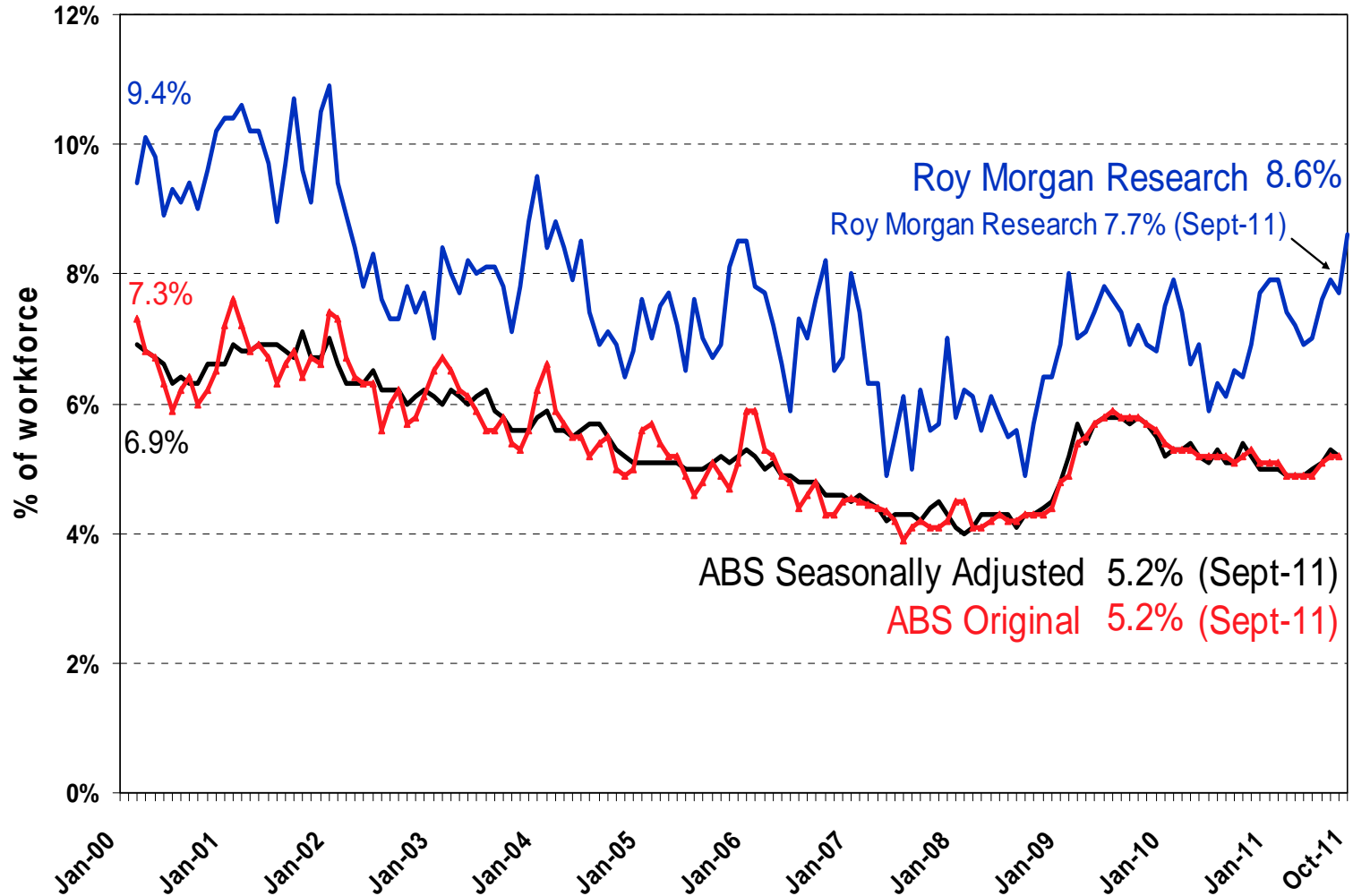
*“Do you believe the Federal Government should have acted sooner to resolve the dispute  
between Qantas Management and the Unions?”*

64% said “Should have acted sooner”

32% said “Should not have acted sooner”

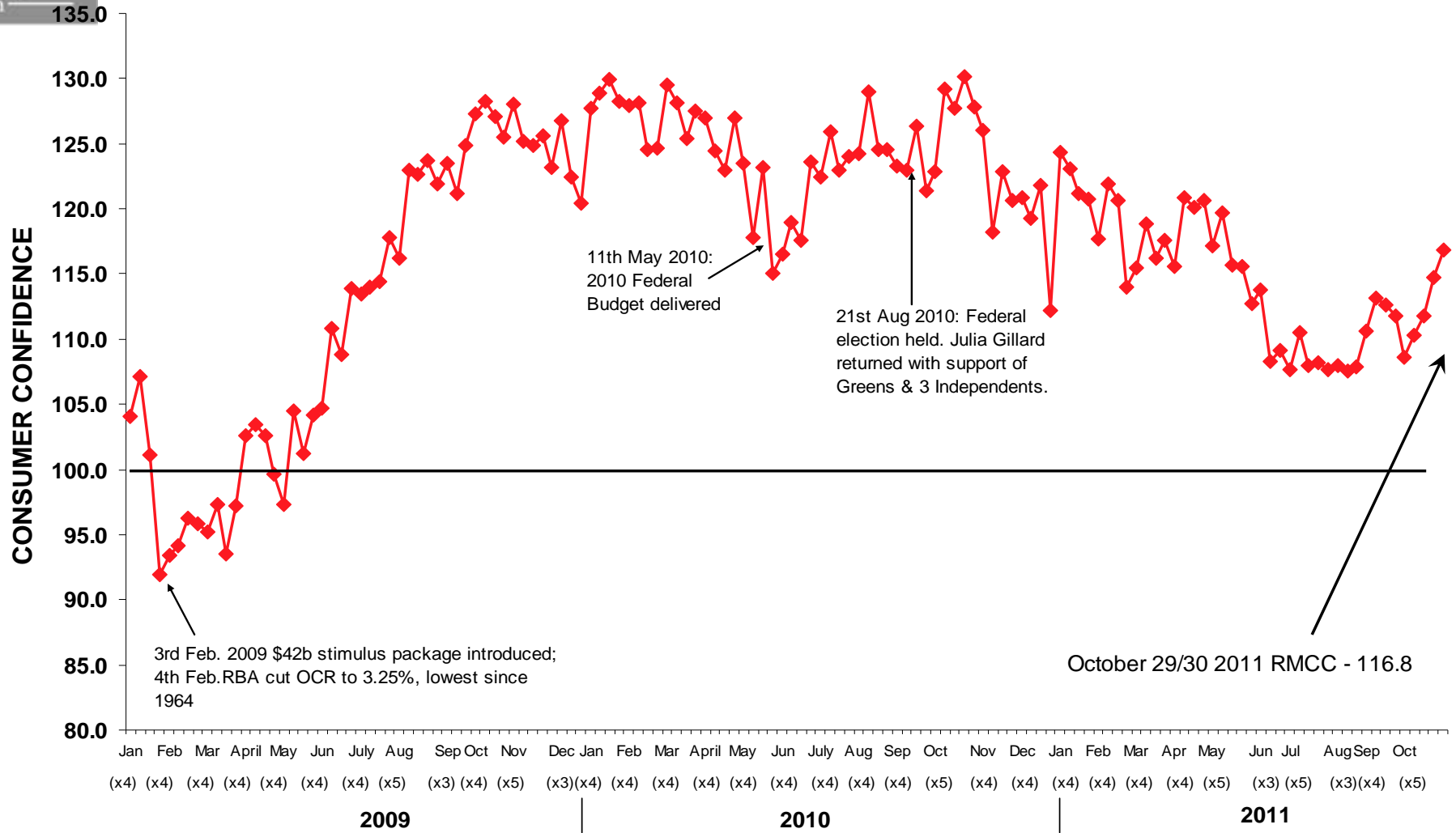
# ROY MORGAN UNEMPLOYMENT

## Level of Workforce Unemployment – Roy Morgan/ABS Monthly Figures



Base: Roy Morgan Research Aust. Population 14+; ABS. Monthly data.

# Roy Morgan Weekly Consumer Confidence – Short Term Trend

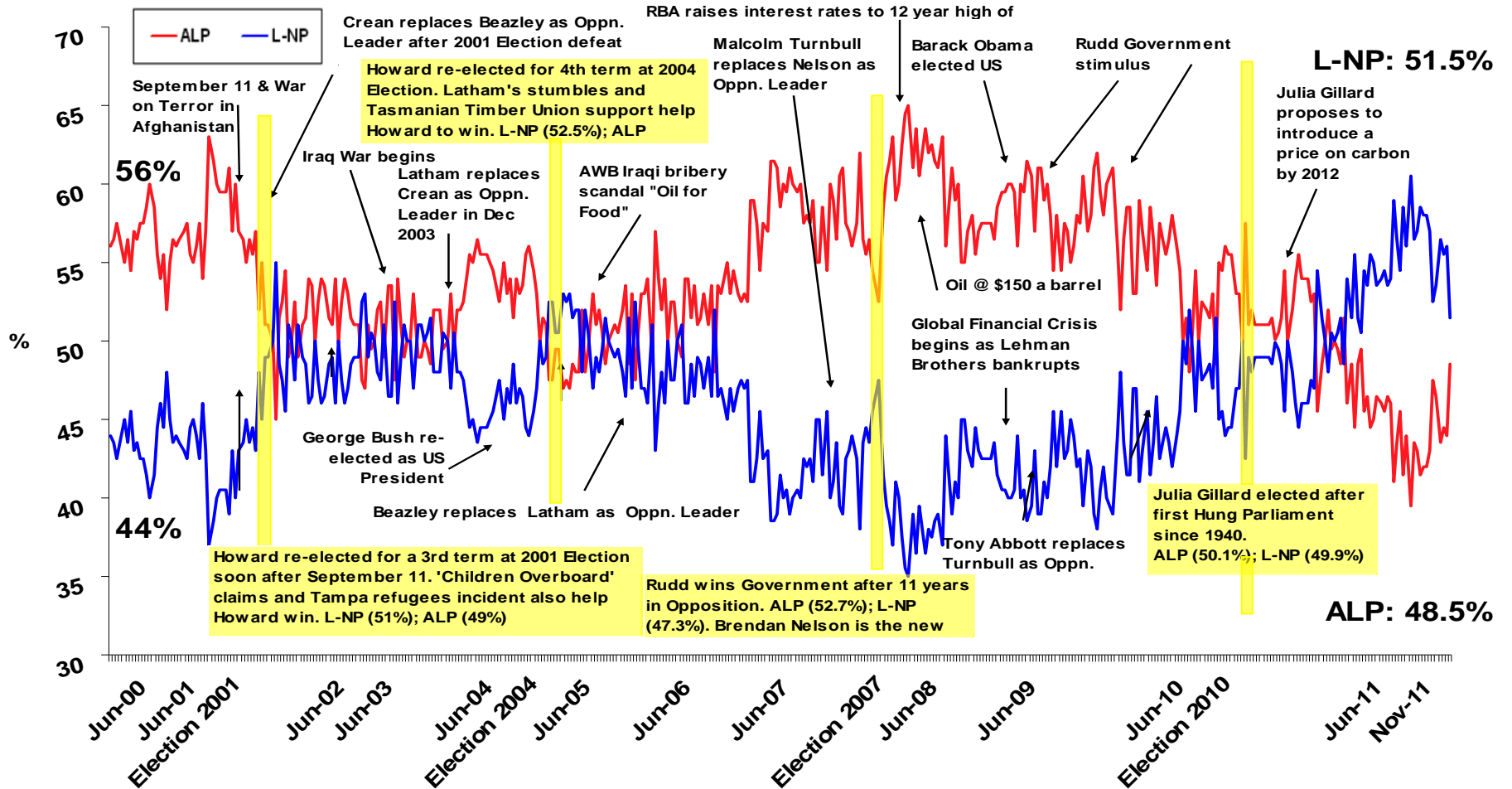


Base Aust Population aged 14+; Source: Roy Morgan Research;

Discover your edge

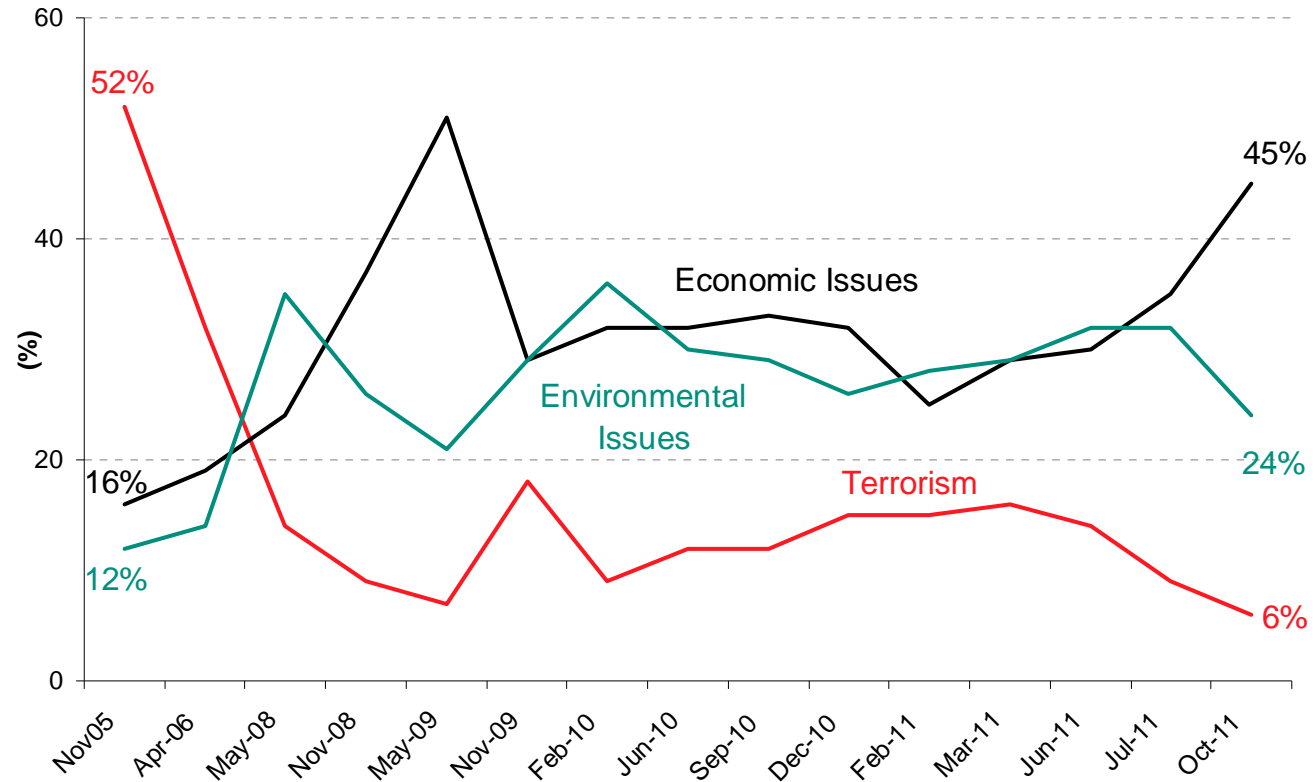
# MORGAN POLL

## Federal: Two-Party Preferred





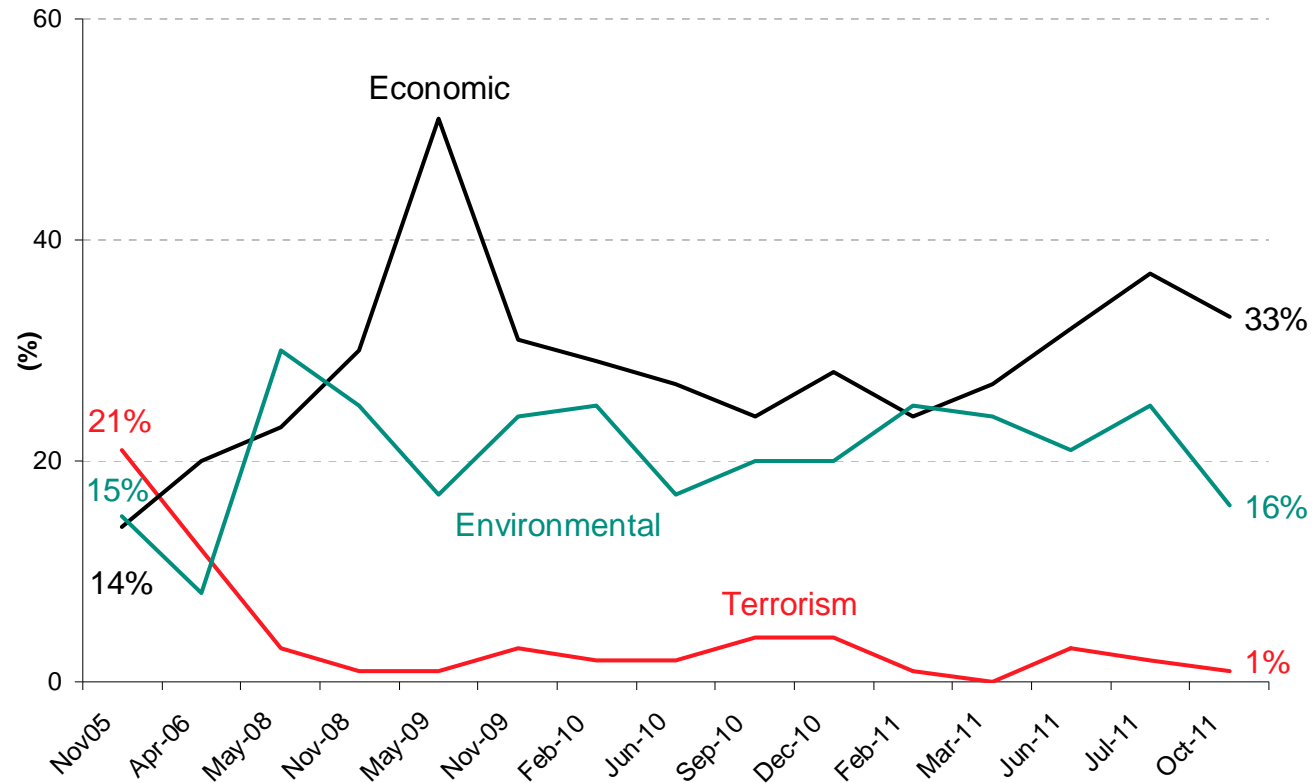
# Most Important Issues Facing the World



Source: Roy Morgan Research

\*Roy Morgan Nationwide telephone poll (n=638) October 25/26, 2011; Aust. Population 14+

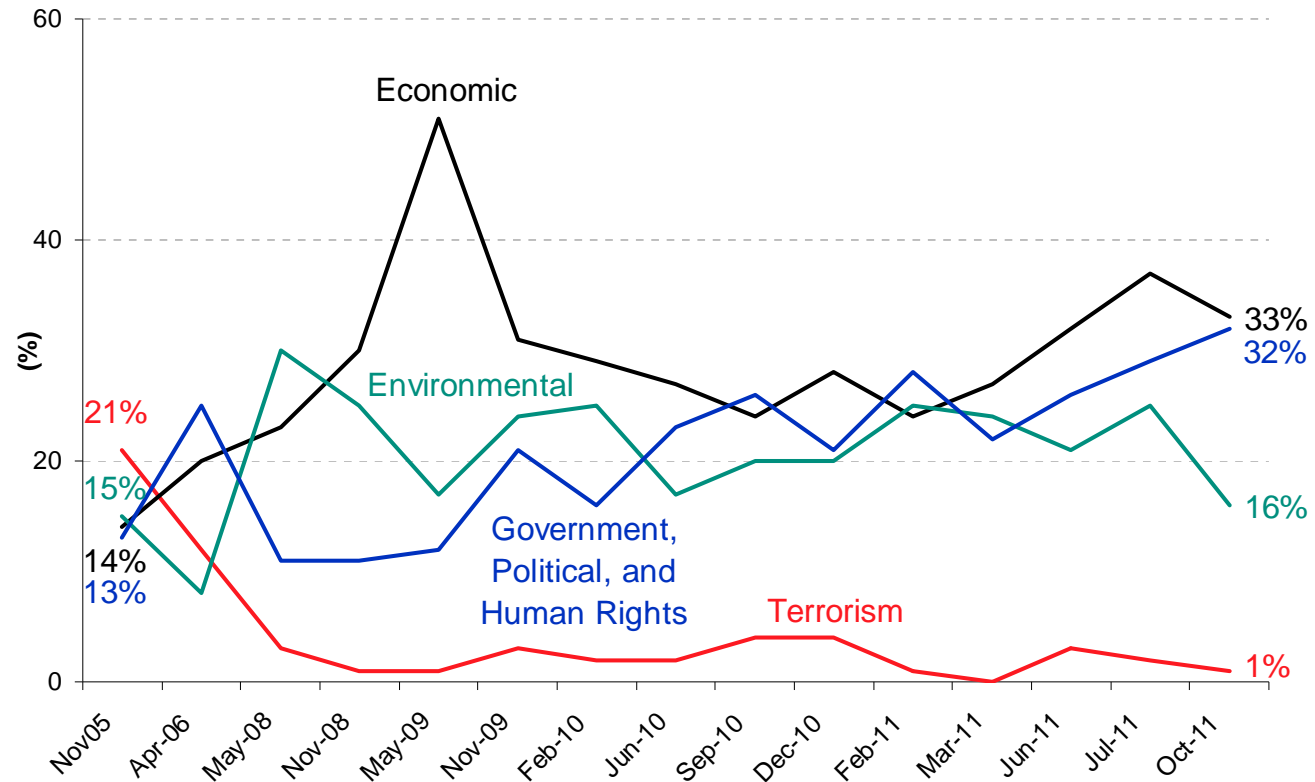
# Most Important Issues Facing Australia



Source: Roy Morgan Research

\*Roy Morgan Nationwide telephone poll (n=638) October 25/26, 2011; Aust. Population 14+

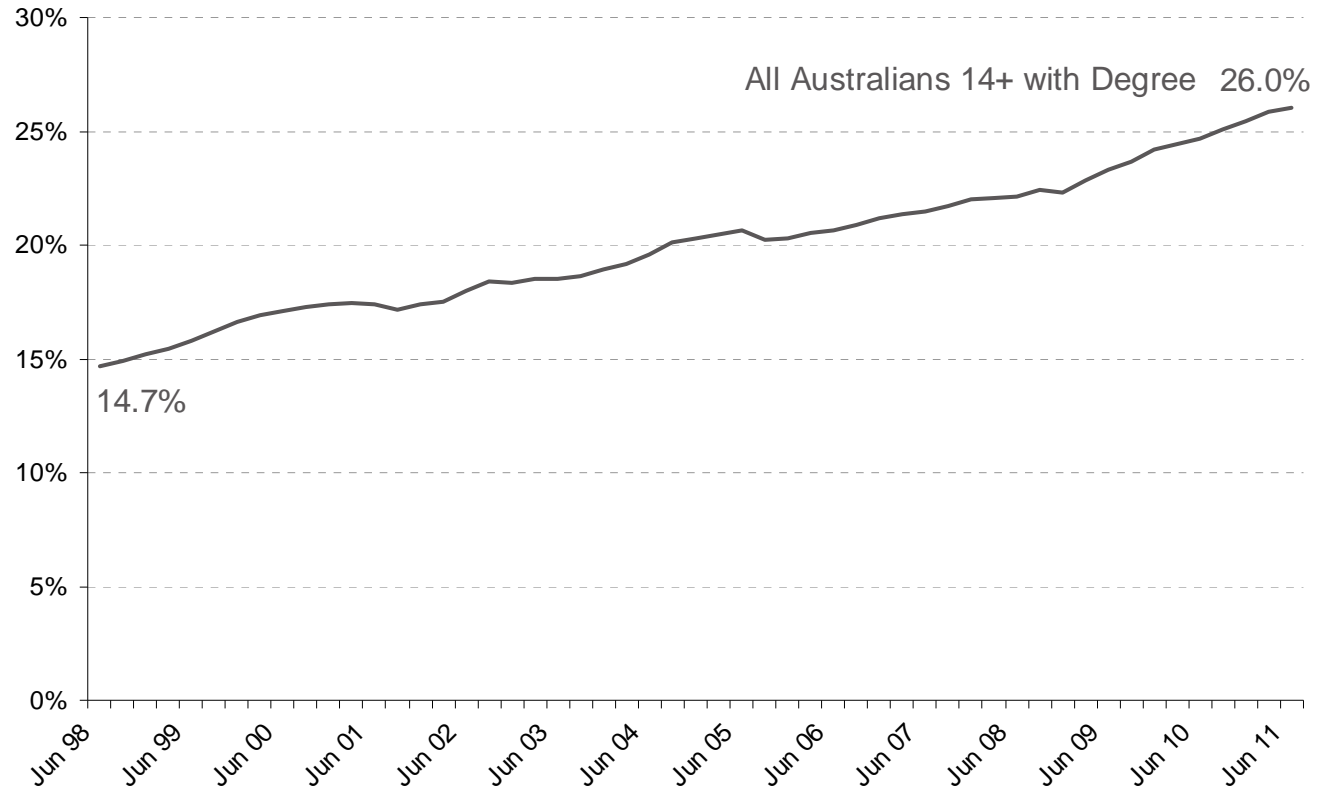
# Most Important Issues Facing Australia



Source: Roy Morgan Research

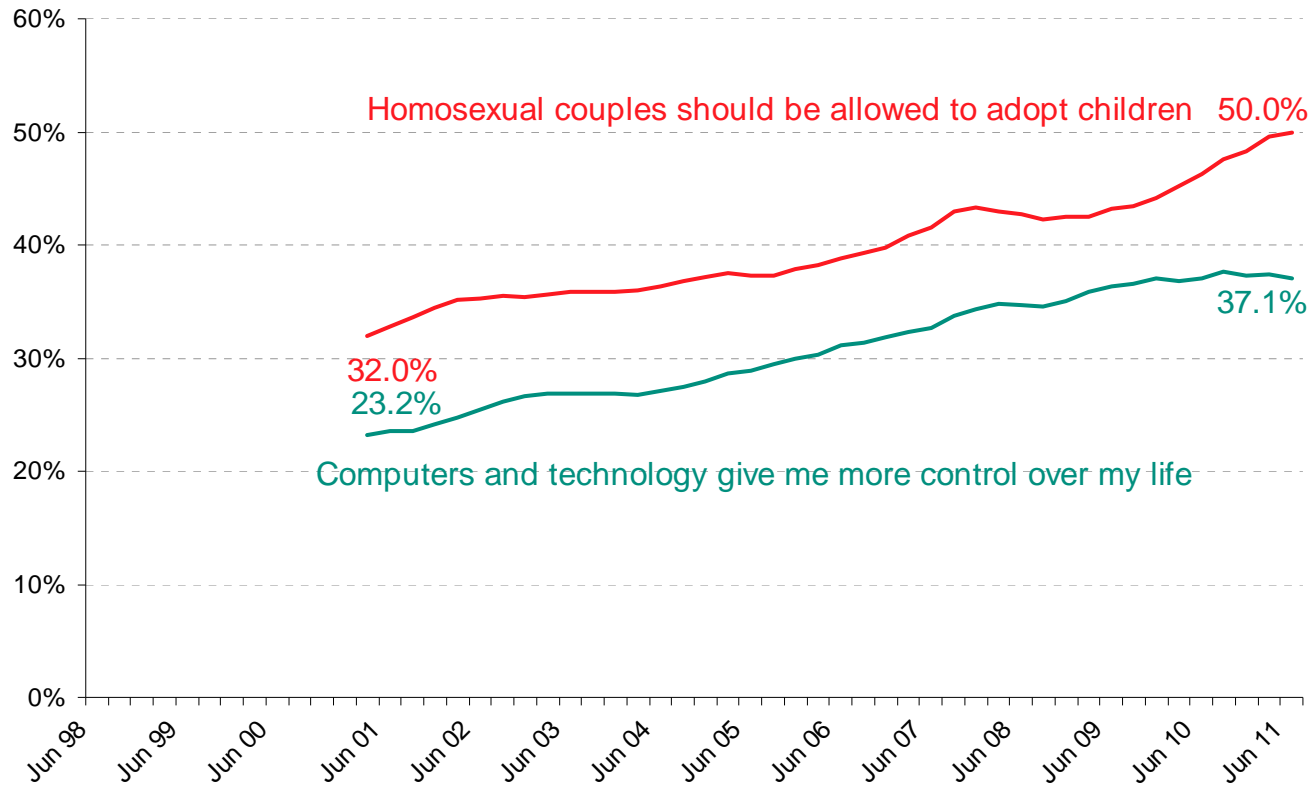
\*Roy Morgan Nationwide telephone poll (n=638) October 25/26, 2011; Aust. Population 14+

## EDUCATION Have a Degree



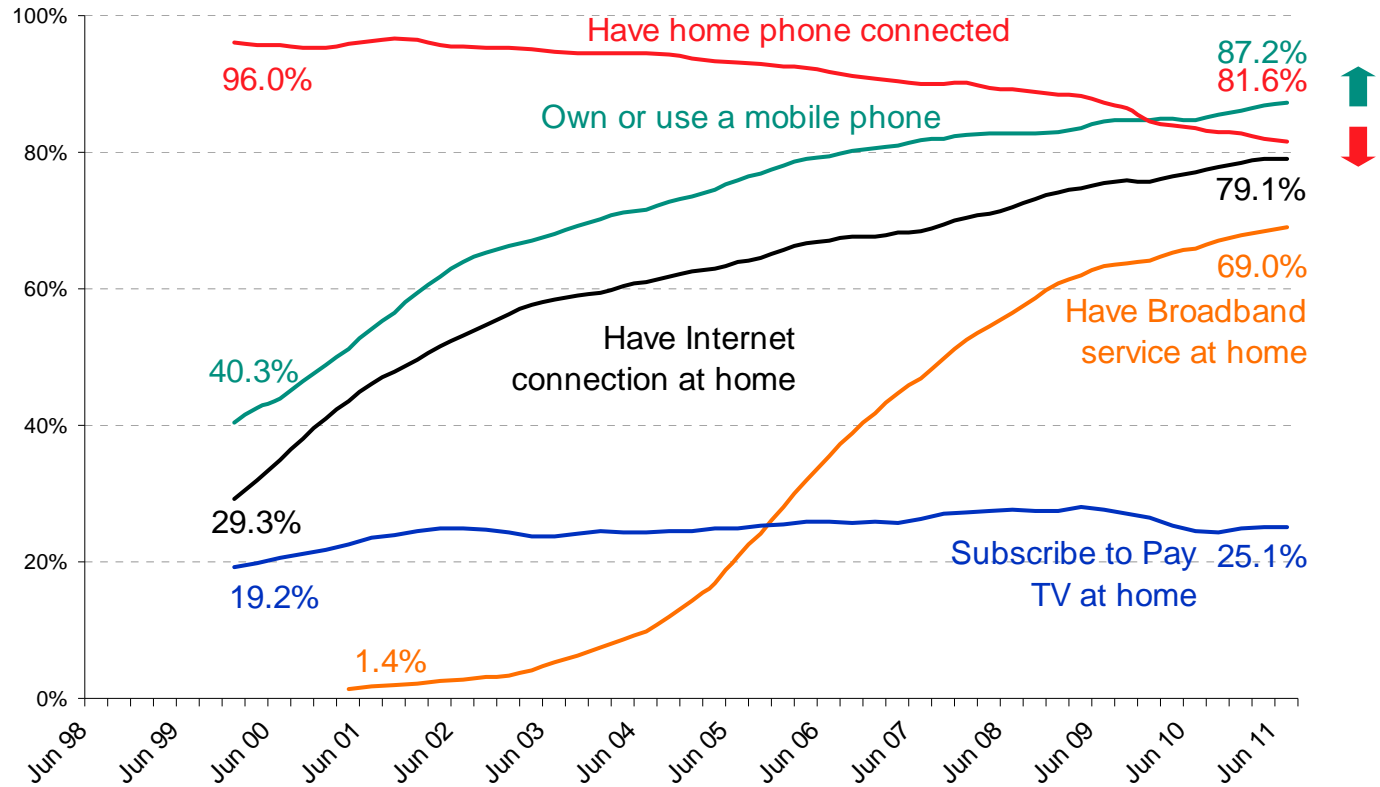
Base Aust Population aged 14+; Source: Roy Morgan Research; 12 month moving average.

## Progressive Attitudes



Base Aust Population aged 14+; Source: Roy Morgan Research; 12 month moving average.

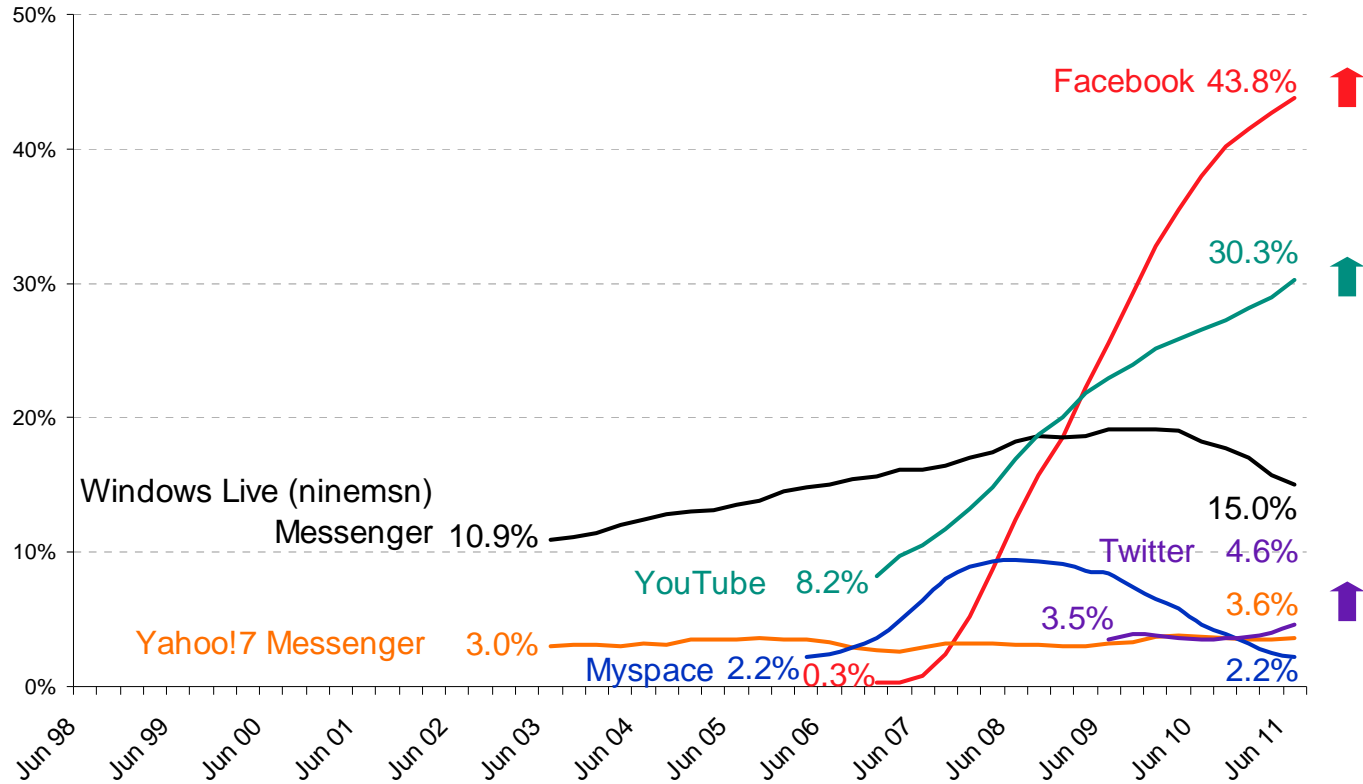
# TECHNOLOGY Telecommunications



Base Aust Population aged 14+; Source: Roy Morgan Research; 12 month moving average.

# TECHNOLOGY

## Online Community or Messaging Website Visited in Last 4 weeks



Base Aust Population aged 14+; Source: Roy Morgan Research; 12 month moving average.

## BIG ISSUES

Unemployment

Australia's Position in the Asian Region

Australia's Position in the Global Economy

Global Competitiveness Vs Australian Jobs

Asylum Seekers & Border Control

Corporate Greed & Growing Public Service

**Any of these could cause a Constitutional Crisis!**