

Tuesday, 27 September 2016

National Party support is at lowest level since before election; now behind potential Labour/ Greens Alliance

During September support for National fell for the second straight month, by 4.5% to 41.5% (**the lowest support for National in three years since September 2013**) now clearly behind a potential Labour/Greens alliance 45.5% (up 5.5%) for the first time in a year – since September 2015 after Prime Minister John Key attended several overseas summits in early September.

If a New Zealand Election was held now the latest New Zealand Roy Morgan Poll shows NZ First would hold the balance of power in determining whether a National-led Government would continue or whether there would be a three-party alliance of Labour/Greens/NZ First governing.

Support for the National partners was up slightly with the Maori Party up 0.5% to 2% while Act NZ was 1% (unchanged) and United Future was 0% (unchanged).

Of the three Parliamentary Opposition parties - Labour's support was at 33.5% (**up a large 8% to its equal highest support since November 2013**), Greens 12% (down 2.5%) and NZ First 8.5% (down 1%). Of the parties outside Parliament the Conservative Party of NZ was 0.5% (down 0.5%), the Mana Party was 0% (down 0.5%) and support for Independent/ Other was 1% (up 0.5%).

In line with the drop in support for National the NZ Roy Morgan Government Confidence Rating has fallen to 117pts (down 10.5pts) in September with 52% (down 6%) of NZ electors saying NZ is 'heading in the right direction' (**the lowest since July 2015**) compared to 35% (up 4.5%) that say NZ is 'heading in the wrong direction' (**the equal highest figure for this indicator since March 2013**).

Gary Morgan, Executive Chairman, Roy Morgan Research, says:

"Today's Roy Morgan New Zealand Poll shows support for National has fallen for the second straight month – down 4.5% to 41.5% - the lowest support for National for three years since September 2013. National is now clearly behind a potential Labour/ Greens 45.5% (up 5.5%) after Prime Minister John Key spent early September overseas attending regional summits in Laos (East Asia Summit) & Micronesia (Pacific Islands Forum).

"The good news for Opposition Leader Andrew Little is that the Labour Party are for once the largest beneficiaries of this month's swing in support – Labour have jumped a large 8% to 33.5%, the highest level of support for Labour since Little became the Opposition Leader nearly two years ago while Greens support is down 2.5% to 12%.

"Despite losing a small amount of support, NZ First (8.5%, down 1%) Leader Winston Peters has reason to be happy with today's Roy Morgan New Zealand Poll. If today's result were repeated at next year's New Zealand Election Peters would be in position to determine whether current PM John Key continued as Prime Minister for a fourth term or whether Opposition Leader Andrew Little stepped up to become New Zealand's next Prime Minister."

Electors were asked: "If a New Zealand Election were held today which party would receive your party vote?" This latest New Zealand Roy Morgan Poll on voting intention was conducted by telephone – both landline and mobile telephone, with a NZ wide cross-section of 864 electors in September 2016. Of all electors surveyed 6% (unchanged) didn't name a party.

For further information:

Contact	Office	Mobile
Gary Morgan:	+61 3 9224 5213	+61 411 129 094
Michele Levine:	+61 3 9224 5215	+61 411 129 093

Margin of Error

The margin of error to be allowed for in any estimate depends mainly on the number of interviews on which it is based. The following table gives indications of the likely range within which estimates would be 95% likely to fall, expressed as the number of percentage points above or below the actual estimate. The figures are approximate and for general guidance only, and assume a simple random sample. Allowance for design effects (such as stratification and weighting) should be made as appropriate.

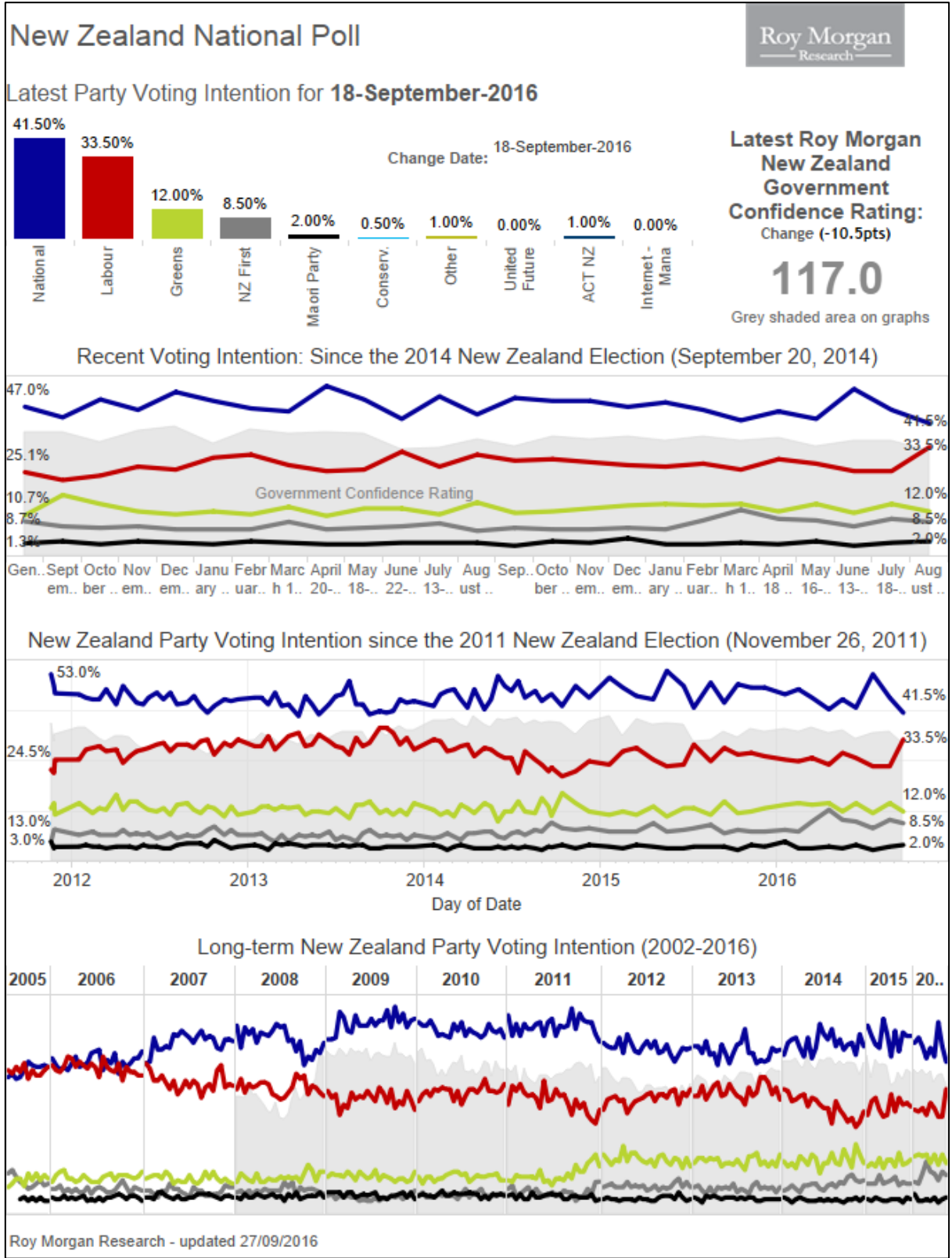
Sample Size	Percentage Estimate			
	40%-60%	25% or 75%	10% or 90%	5% or 95%
1,000	±3.2	±2.7	±1.9	±1.4
1,500	±2.6	±2.2	±1.5	±1.1

Roy Morgan New Zealand Interactive Voting Charts

These interactive charts allow a deeper look at voting patterns in New Zealand over varying timeframes and provide election observers with the ability to pinpoint key turning points for the political parties.

[View interactive New Zealand Election charts here.](#)

Purchase the latest Roy Morgan [New Zealand Electorate Profiles.](#)



Voting Intention Summary

The following table compares the latest New Zealand Roy Morgan Polls on Voting Intention with the result from the September 20, 2014 General Election:

PARTY VOTE ELECTIONS	National %	Labour %	Green Party* %	NZ First %	Maori Party* %	ACT NZ %	United Future* %	Conserva tives* %	Mana Party* %	Internet* %	Other %
October 12, 1996*	33.87	28.19	10.10	13.35	n/a	6.10	0.88	n/a	n/a	n/a	7.51
November 27, 1999	30.50	38.74	5.16	4.26	n/a	7.04	1.66	n/a	n/a	n/a	12.64
July 27, 2002	20.93	41.26	7.00	10.38	n/a	7.14	6.69	n/a	n/a	n/a	6.60
September 17, 2005	39.10	41.10	5.30	5.72	2.12	1.51	2.67	n/a	n/a	n/a	2.48
November 8, 2008	44.93	33.99	6.72	4.07	2.39	3.65	0.87	n/a	n/a	n/a	3.38
November 26, 2011	47.31	27.48	11.06	6.59	1.43	1.07	0.60	2.65	1.08	n/a	0.73
September 20, 2014	47.04	25.13	10.70	8.66	1.32	0.69	0.22	3.97	1.42	n/a	0.85
ROY MORGAN POLL											
Sep 29-Oct 12, 2014	43.5	22.5	17.5	7	2	0.5	0.5	5	1	^	0.5
Oct 27-Nov 9, 2014	49.5	24	14.5	6.5	1	0.5	^	2	0.5	^	1.5
Nov 24-Dec 7, 2014	46	27	12	7	2	1.5	^	2.5	1	^	1
January 5-18, 2015	52	26	11	6	1.5	1	^	2	^	^	0.5
February 2-15, 2015	49	30	12	6	1	^	^	1.5	^	^	0.5
March 2-15, 2015	46.5	31	11	6	2	1	^	1.5	^	^	1
April 6-19, 2015	45.5	27.5	13.5	8.5	1.5	1	^	1	^	^	1.5
May 4-17, 2015	54	25.5	10.5	6	1	1	^	1	^	^	1
June 8-21, 2015	49.5	26	13	6.5	1	1	^	1	^	^	2
June 29-July 12, 2015	43	32	13	7	1.5	0.5	^	1.5	^	^	1.5
August 3-16, 2015	50.5	27	11	8	1.5	0.5	^	^	0.5	^	1
Aug 31-Sep 13, 2015	44.5	31	15	5.5	1.5	0.5	0.5	1	0.5	^	^
Sep 28-Oct 11, 2015	50	29	11.5	6.5	0.5	0.5	^	0.5	0.5	^	1
Oct 26-Nov 8, 2015	49	29.5	12	6	2	0.5	^	0.5	0.5	^	^
Nov 23-Dec 6, 2015	49	28.5	13	6	1.5	0.5	0.5	0.5	^	^	0.5
Jan 4-17, 2016	47	27.5	14	6.5	3	0.5	^	1	^	^	0.5
Feb 1-14, 2016	48.5	27	14.5	6	1	0.5	^	1	0.5	^	1
Feb 29-Mar 13, 2016	46	28	14	9	1	1	^	0.5	0.5	^	^
April 4-17, 2016	42.5	26	14.5	12.5	1.5	1.5	^	1	^	^	0.5
May 2-15, 20156	45.5	29.5	12	9.5	1	1	^	0.5	^	^	1
May 30-June 12, 2016	43	28	14.5	9	2	0.5	^	1	0.5	0.5	1
Jul 4-17, 2016	53	25.5	11.5	7	0.5	1	^	0.5	0.5	^	0.5
August 8-21, 2016	46	25.5	14.5	9.5	1.5	1	^	1	0.5	^	0.5
Sep 5-18, 2016	41.5	33.5	12	8.5	2	1	^	0.5	^	^	1

^Result less than 0.5%. *The 1996 Election was the first New Zealand Election contested via MMP (Mixed Member Proportional). At the 1996 Election the Greens Party contested as part of the "Alliance" political grouping with four other political parties. *United Future was formed via a merger in 2000 between the United Party and the Future New Zealand Party, which separately contested the 1999 Election. *The Maori Party was launched in July 2004; The Mana Party was launched in July 2011. The Conservative Party was launched in August 2011. The Internet Party was launched in January 2014. The Internet Party & Mana Party announced an alliance in May 2014 that jointly contested the 2014 NZ Election. The combined result for the Internet-Mana Party Alliance is included in the Mana Party result (1.42%).

FOR IMMEDIATE RELEASE

Two-Party Preferred: National Party-led Government vs. Parliamentary Opposition Parties

The following table compares the latest New Zealand Roy Morgan Polls on Voting Intention with the result from the September 20, 2014 General Election:

	National Party-led Government*	Parliamentary Opposition Parties#
Election, November 8, 2008	51.84	48.16
Election, November 26, 2011	50.41	46.21
Election, September 20, 2014	49.27	44.49
<u>ROY MORGAN POLL</u>		
September 29 – October 12, 2014	46.5	47
October 27 – November 9, 2014	51	45
November 24 – December 7, 2014	49.5	46
January 5-18, 2015	54.5	43
February 2-15, 2015	50	48
March 2-15, 2015	49.5	48
April 6-19, 2015	48	49.5
May 4-7, 2015	56	42
June 8-21, 2015	51.5	45.5
June 29-July 12, 2015	45	52
August 3-16, 2015	52.5	46
Aug 31-Sep 13, 2015	47	51.5
Sep 28-Oct 11, 2015	51	47
Oct 26-Nov 8, 2015	51.5	47.5
Nov 23-Dec 6, 2015	51.5	47.5
Jan 4-17, 2016	50.5	48
Feb 1-14, 2016	50	47.5
Feb 29 – Mar 13, 2016	48	51
April 4 – 17, 2016	45.5	53
May 2-15, 2016	47.5	51
May 30-June 12, 2016	45.5	51.5
Jul 4-17, 2016	54.5	44
Aug 8-21, 2016	48.5	49.5
Sep 5-18, 2016	44.5	54

*National-led Government: National Party, Maori Party, ACT NZ, United Future; #Opposition Parties: Labour Party, Green Party, NZ First. Parties not represented: Conservative Party, Internet Party, Mana Party & Other not included as they are not represented in Parliament.

Finding No. 6971 taken from Computer Report No. 2429

The Roy Morgan Poll is conducted by the **ONLY** Australian and NZ member of the Gallup International Association.

No other public opinion poll taken in Australia or New Zealand has this qualification.

NEW ZEALAND: HEADING IN "RIGHT" OR "WRONG" DIRECTION?

Electors were asked: "Generally speaking, do you feel that things in New Zealand are heading in the right direction or would you say things are seriously heading in the wrong direction?"

NZ Roy Morgan Government Confidence Rating: Interviewing Dates (National Party Govt.)

	May 5-18, 2014	May 19-June 1, 2014	June 2-15, 2014	June 16-29, 2014	June 30-July 13, 2014	July 14-27, 2014	Aug 4-17, 2014
	%	%	%	%	%	%	%
Right direction	60	64.5	63.5	65	65.5	60	63.5
Wrong direction	28	24	24	23.5	23	25	24.5
Roy Morgan GCR#	132	140.5	139.5	141.5	142.5	135	139
Can't say	12	11.5	12.5	11.5	11.5	15	12
TOTAL	100	100	100	100	100	100	100

NZ Roy Morgan Government Confidence Rating: Interviewing Dates (National Party Govt.)

	Aug 18-31, 2014	Sep 1-14, 2014	Sep 29-Oct 12, 2014	Oct 27-Nov 9, 2014	Nov 24-Dec 7, 2014	Jan 5-18, 2015	Feb 2-15, 2015
	%	%	%	%	%	%	%
Right direction	61	62	61.5	56	62.5	67	55
Wrong direction	25	24	24.5	30	24.5	23	31
Roy Morgan GCR#	136	138	137	126	138	144	124
Can't say	14	14	14	14	13	10	14
TOTAL	100	100	100	100	100	100	100

NZ Roy Morgan Government Confidence Rating: Interviewing Dates (National Party Govt.)

	Mar 2-15, 2015	April 6-19, 2015	May 4-17, 2015	June 8-21, 2015	June 29-July 12, 2015	Aug 3-16, 2015	Aug 31-Sep 13, 2015	Sep 28-Oct 11, 2015
	%	%	%	%	%	%	%	%
Right direction	64.5	62	63	62.5	51	54	58	53
Wrong direction	24	27	26.5	27	33	34	29.5	31
Roy Morgan GCR#	140.5	135	136.5	135.5	118	120	128.5	122
Can't say	11.5	11	11	10.5	16	12	12.5	16
TOTAL	100	100	100	100	100	100	100	100

NZ Roy Morgan Government Confidence Rating: Interviewing Dates (National Party Govt.)

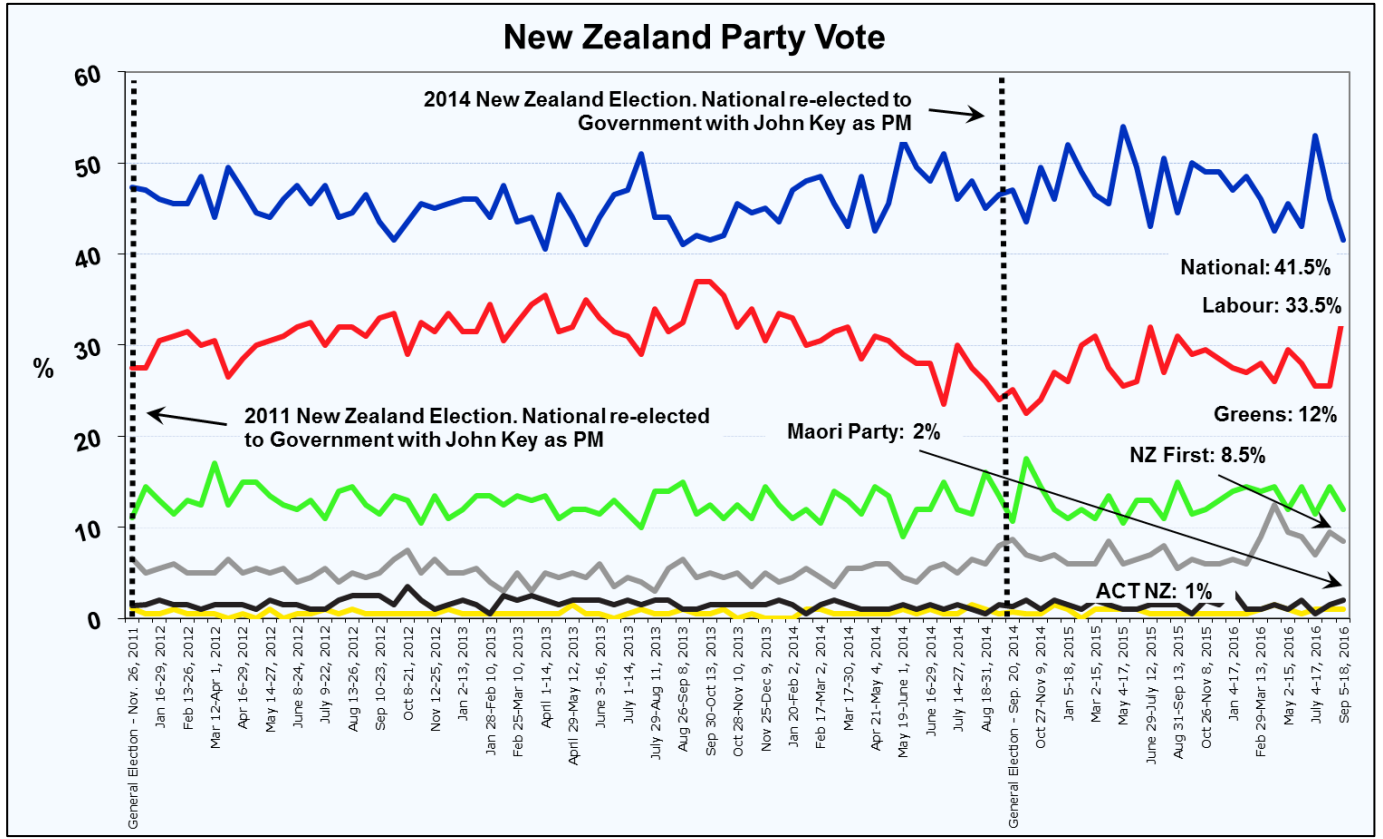
	Oct 26- Nov 8, 2015	Nov 23-Dec 6, 2015	Jan 4-17, 2016	Feb 1-14, 2016	Feb 29-Mar 13, 2016	Apr 4-17, 2016	May 2-15, 2016	May 30-June 12, 2016
	%	%	%	%	%	%	%	%
Right direction	60	59.5	59.5	56.5	61	57.5	59	54.5
Wrong direction	28.5	31	28	28.5	29	30.5	29	34
Roy Morgan GCR#	131.5	128.5	131.5	128	132	127	130	120.5
Can't say	11.5	9.5	12.5	15	10	12	12	11.5
TOTAL	100	100	100	100	100	100	100	100

NZ Roy Morgan Government Confidence Rating: Interviewing Dates (National Party Govt.)

	Jul 4-17, 2016	Aug 8-21, 2016	Sep 5-18, 2016
	%	%	%
Right direction	57.5	58	52
Wrong direction	30.5	30.5	35
Roy Morgan GCR#	127	127.5	117
Can't say	12	11.5	13
TOTAL	100	100	100

FOR IMMEDIATE RELEASE

New Zealand Party Vote



New Zealand Roy Morgan GCR

