

State of the Nation After the Federal Election

By Michele Levine, Gary Morgan & Julian McCrann

***Presented at Marcus Oldham College
by***

Michele Levine

CEO Roy Morgan Research

September 22, 2010



What worries you about a Prime Minister?

- *A PM who is a woman* **6%**
- *A PM who doesn't believe in God* **22%**
- *Not married, living in defacto relationship* **15%**
- *A Catholic Prime Minister* **9%**
- *Prime Minister who has conservative values in relation to such things as abortion and stem cell research* **43%**

Today

2 Party Preferred ALP 52% L-NP 48%

Primary ALP 35.5%

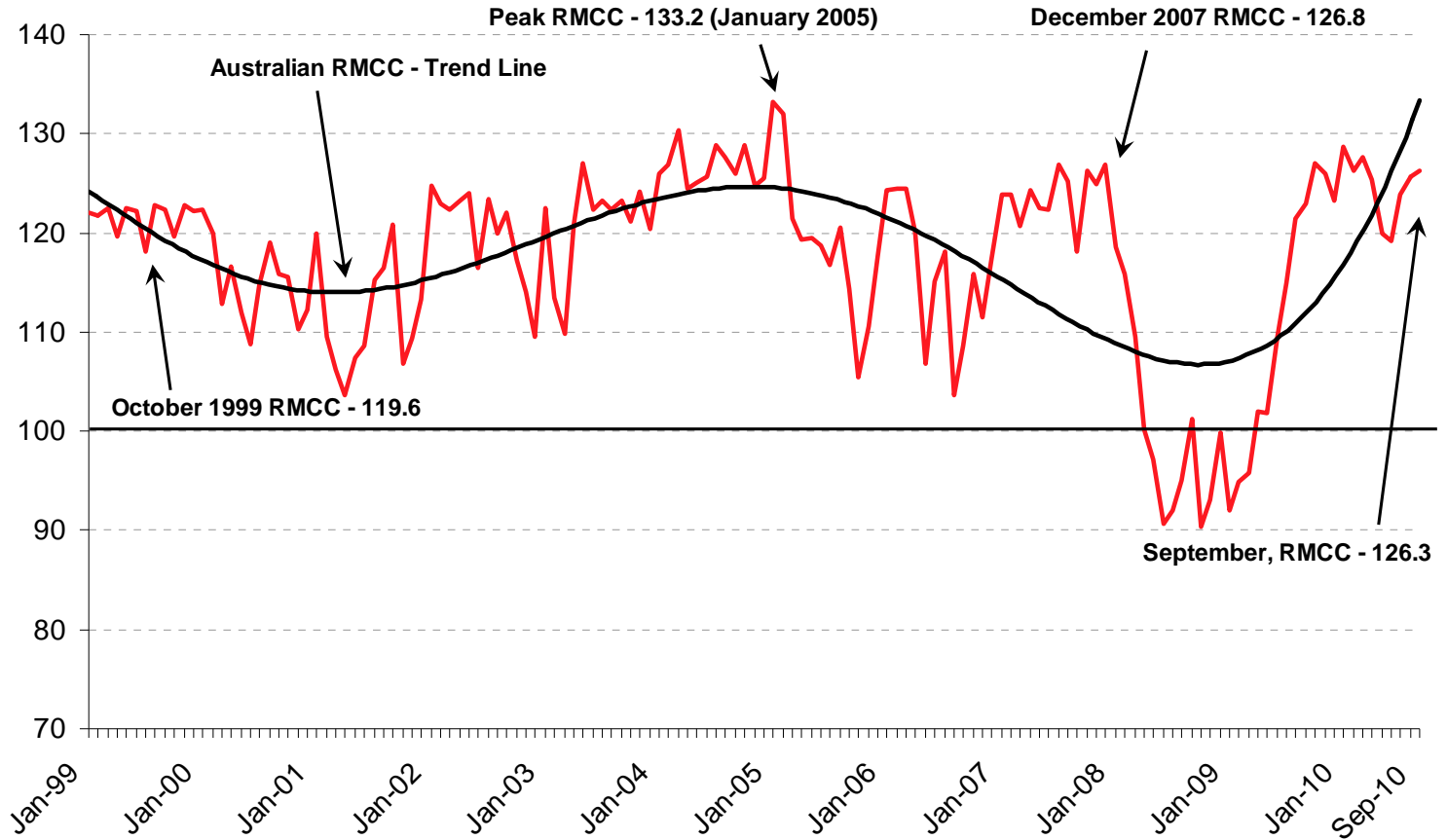
L-NP 42.5%

Green 15%

Ind/Oth 7%

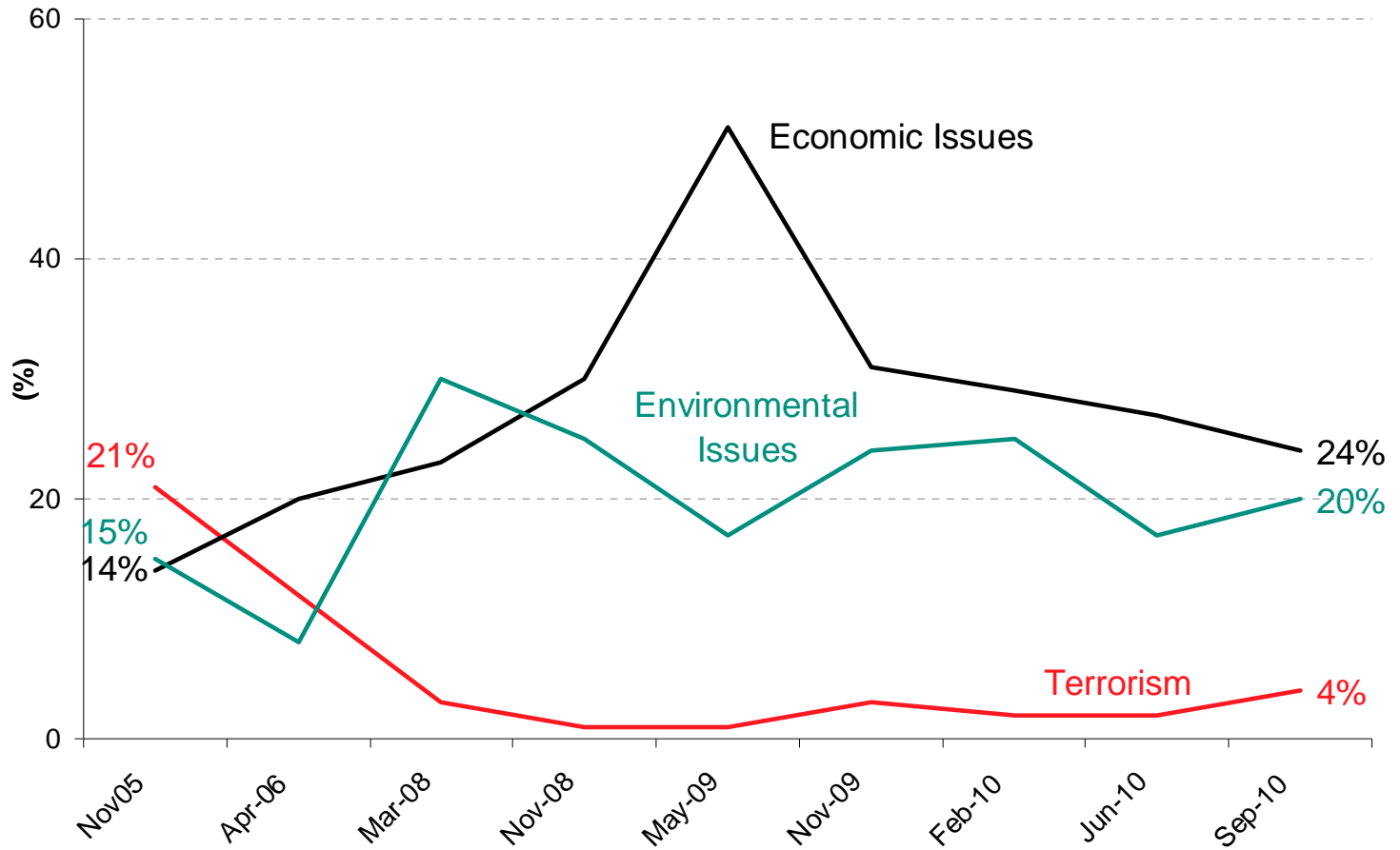
ECONOMY

Roy Morgan Consumer Confidence – Long Term Trend



Base Aust Population aged 14+; Source: Roy Morgan Research.

Most Important Issues Facing Australia

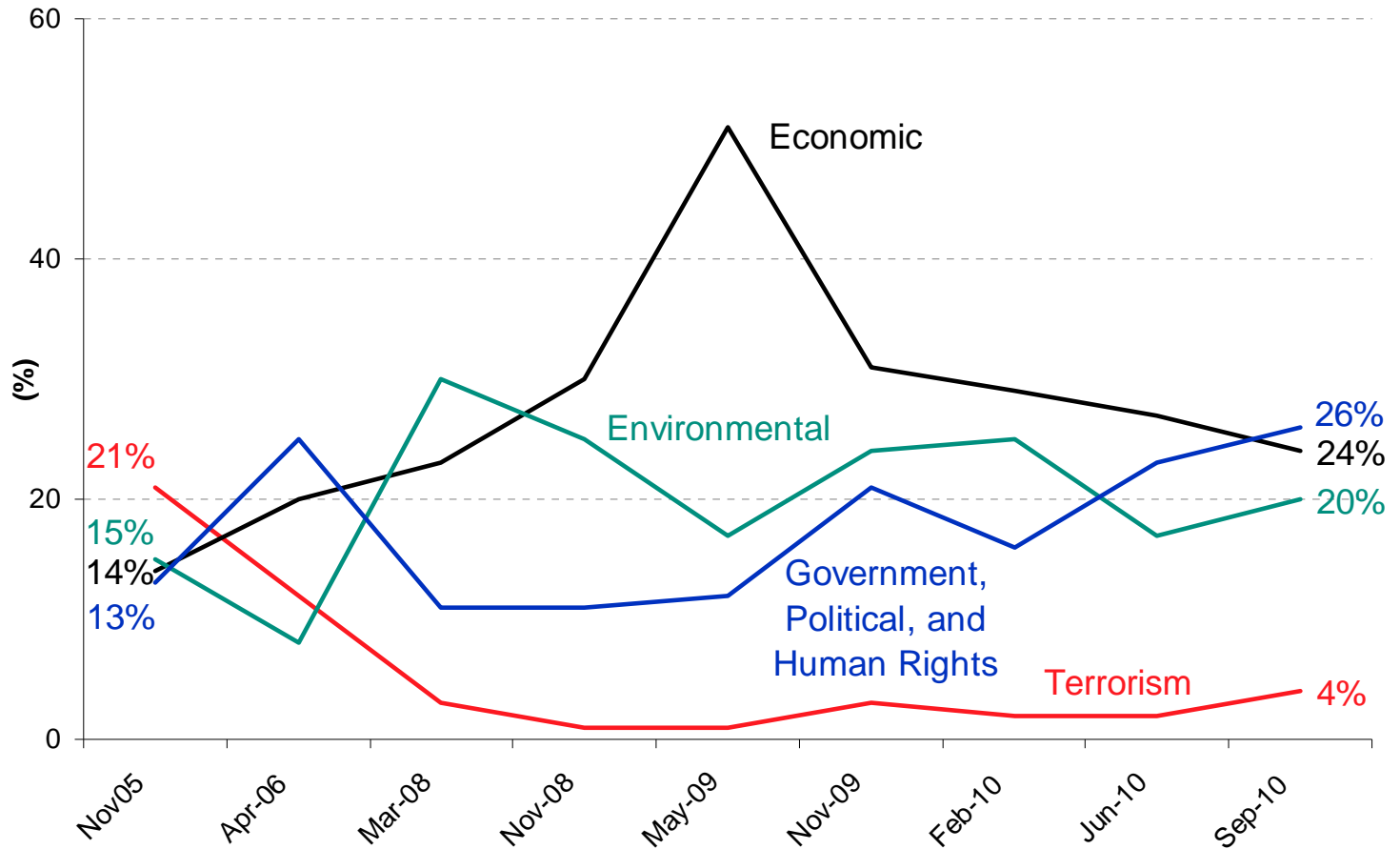


Source: Roy Morgan Research

*Roy Morgan Nationwide telephone poll (n=649) September 15/16, 2010; Aust. Population 14+

Discover your edge

Most Important Issues Facing Australia

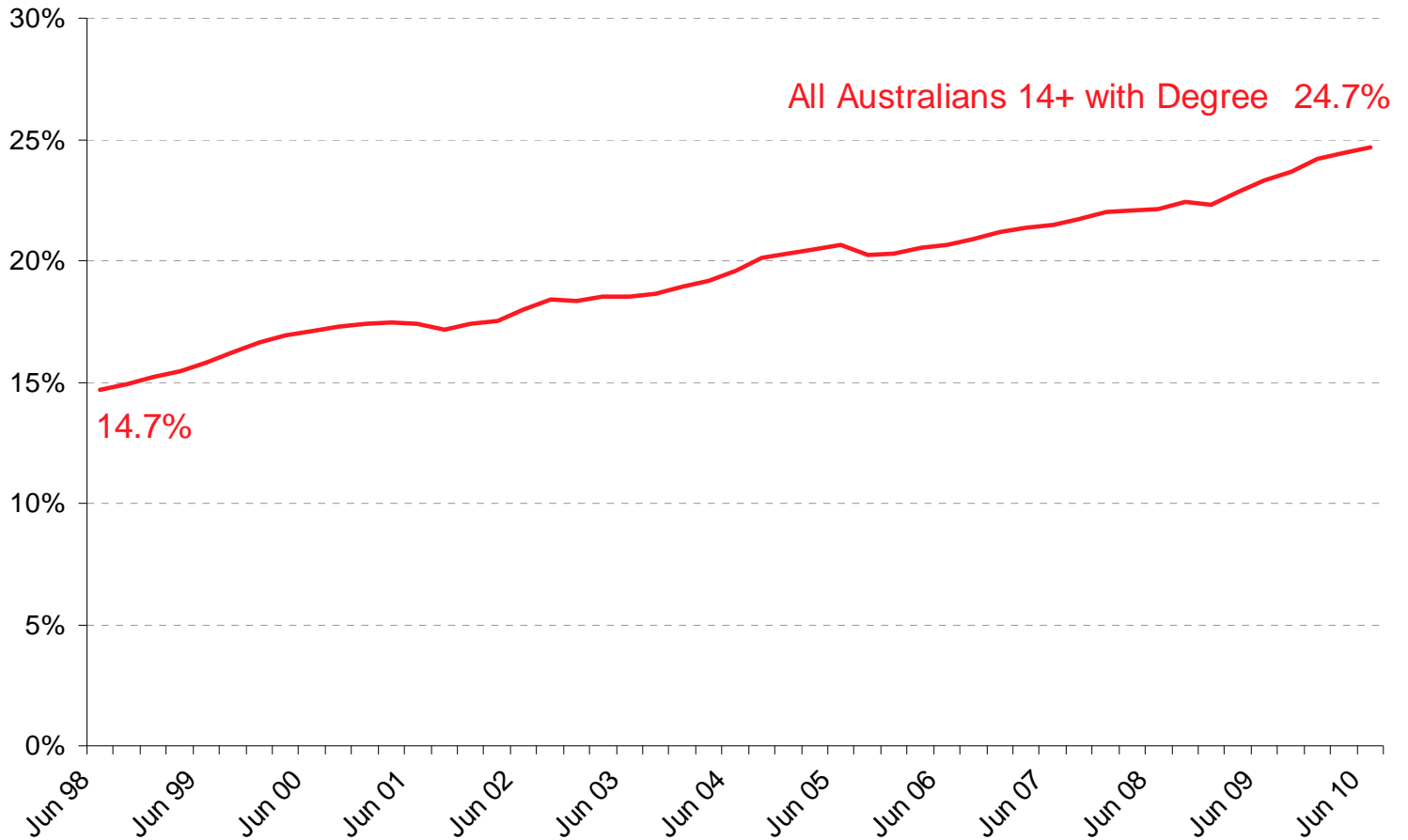


Source: Roy Morgan Research

*Roy Morgan Nationwide telephone poll (n=649) September 15/16, 2010; Aust. Population 14+

SOCIETY

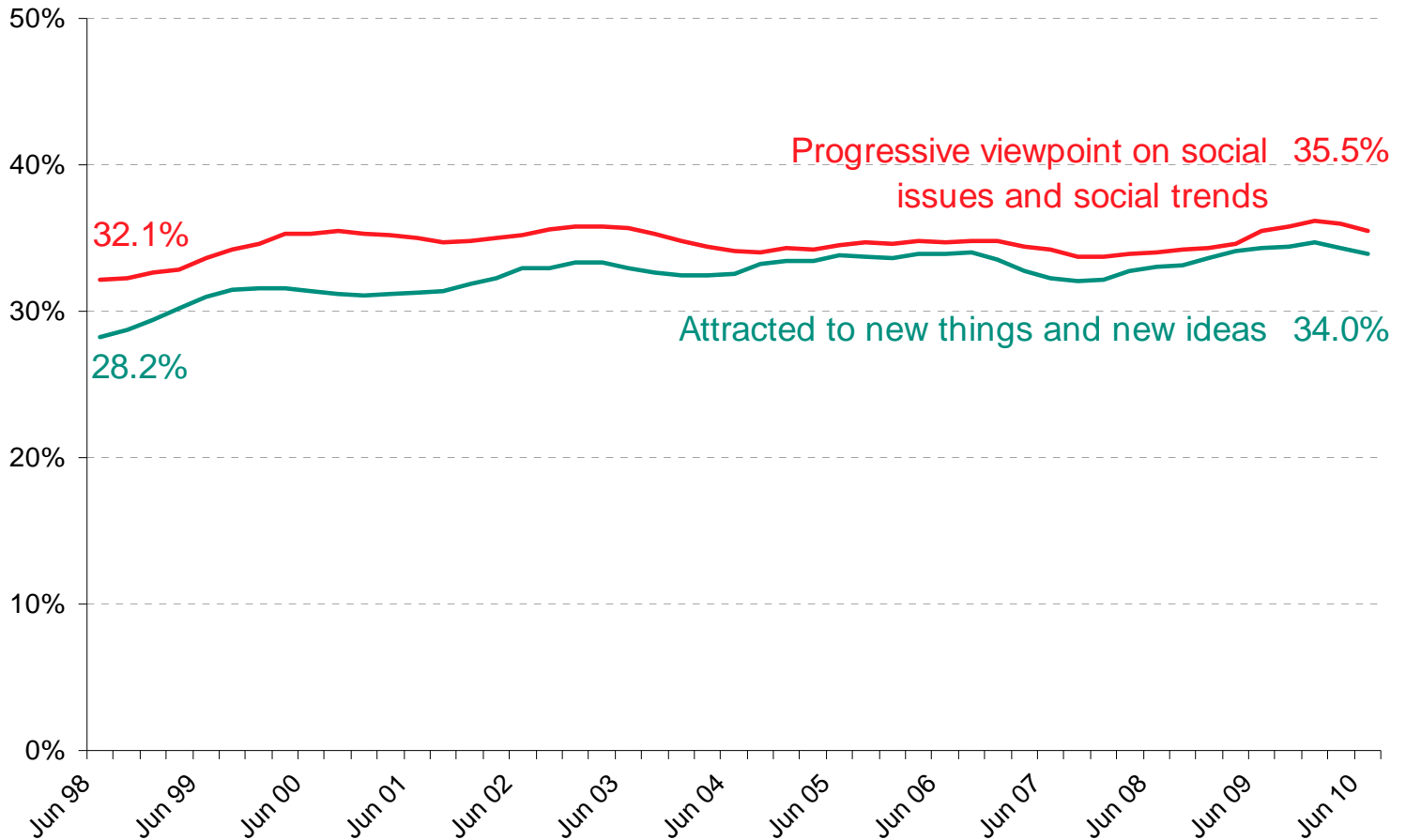
% with a Degree



Base Aust Population aged 14+; Source: Roy Morgan Research; 12 month moving average.

SOCIETY

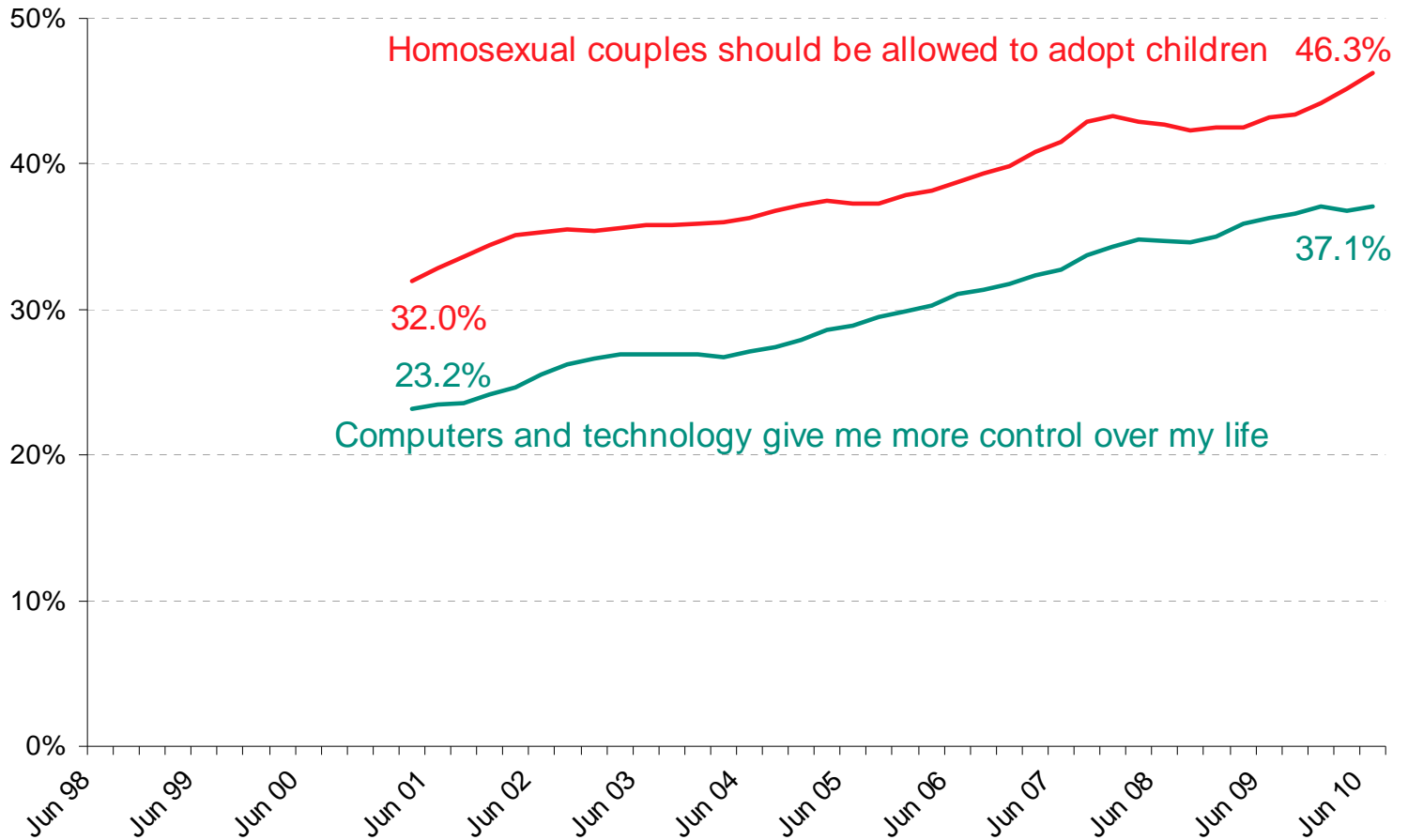
% Consider themselves Progressive and Attracted to New Things and New Ideas



Base Aust Population aged 14+; Source: Roy Morgan Research; 12 month moving average.

SOCIETY

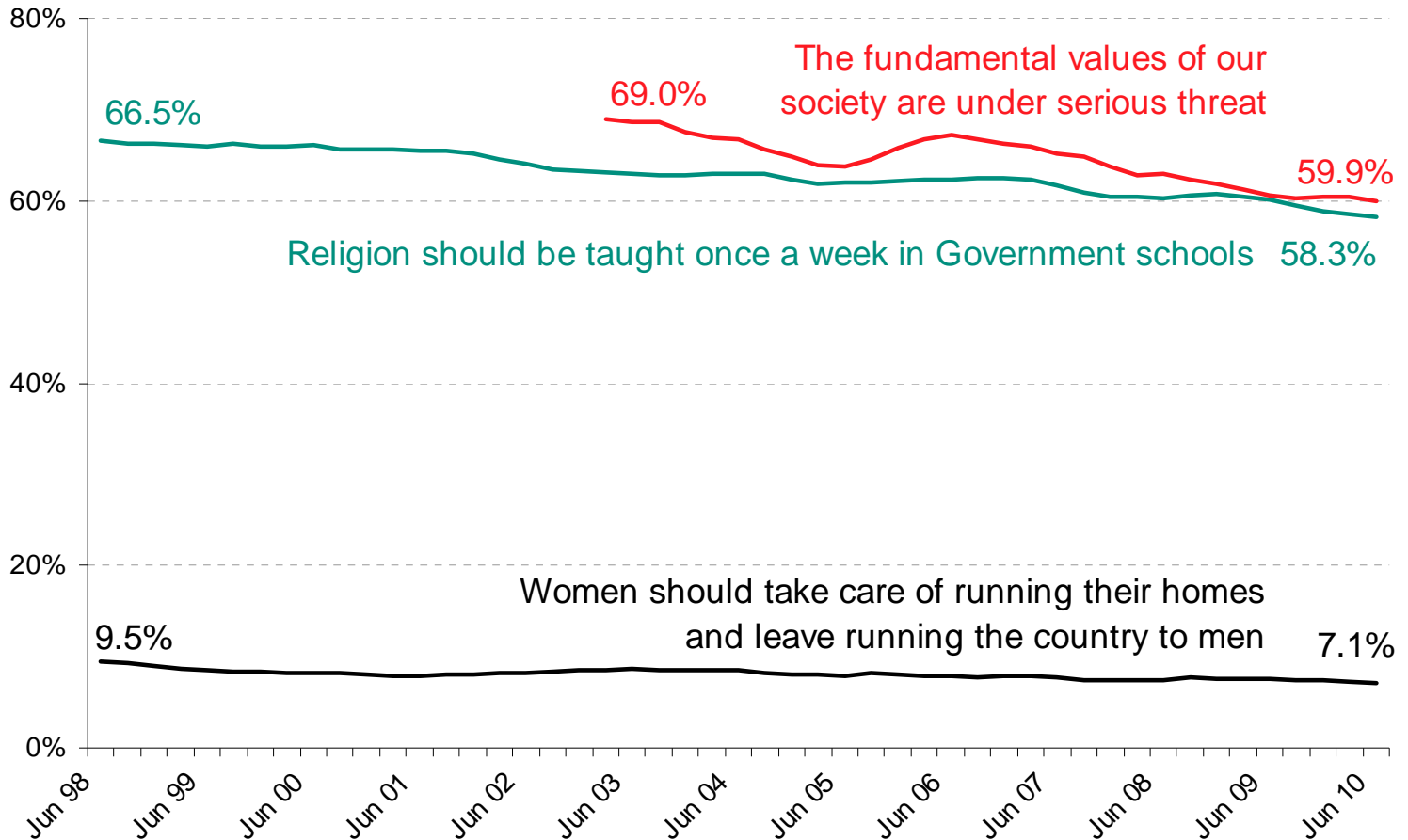
Progressive Attitudes



Base Aust Population aged 14+; Source: Roy Morgan Research; 12 month moving average.

SOCIETY

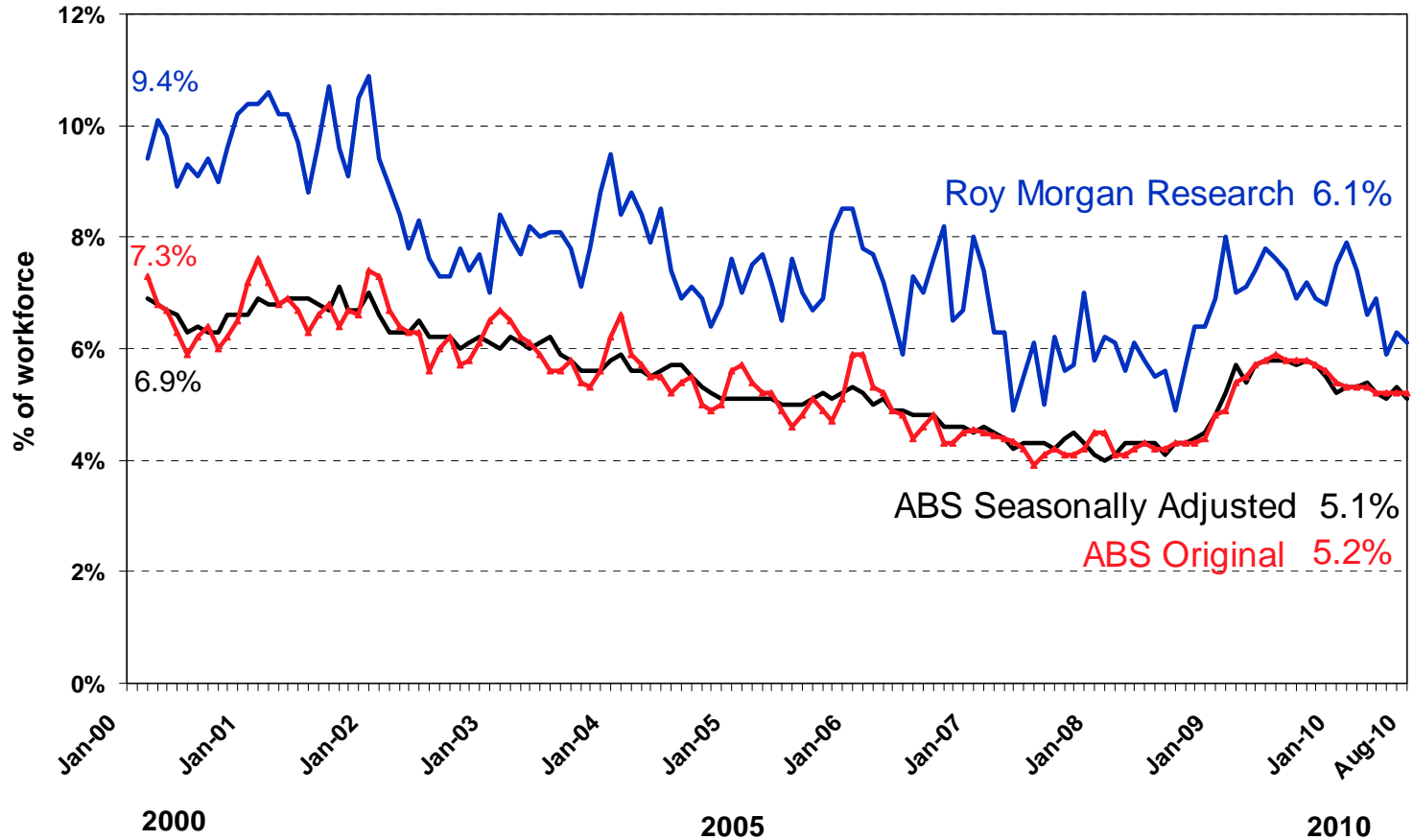
Conservative Attitudes Declining



Base Aust Population aged 14+; Source: Roy Morgan Research; 12 month moving average.

ECONOMY

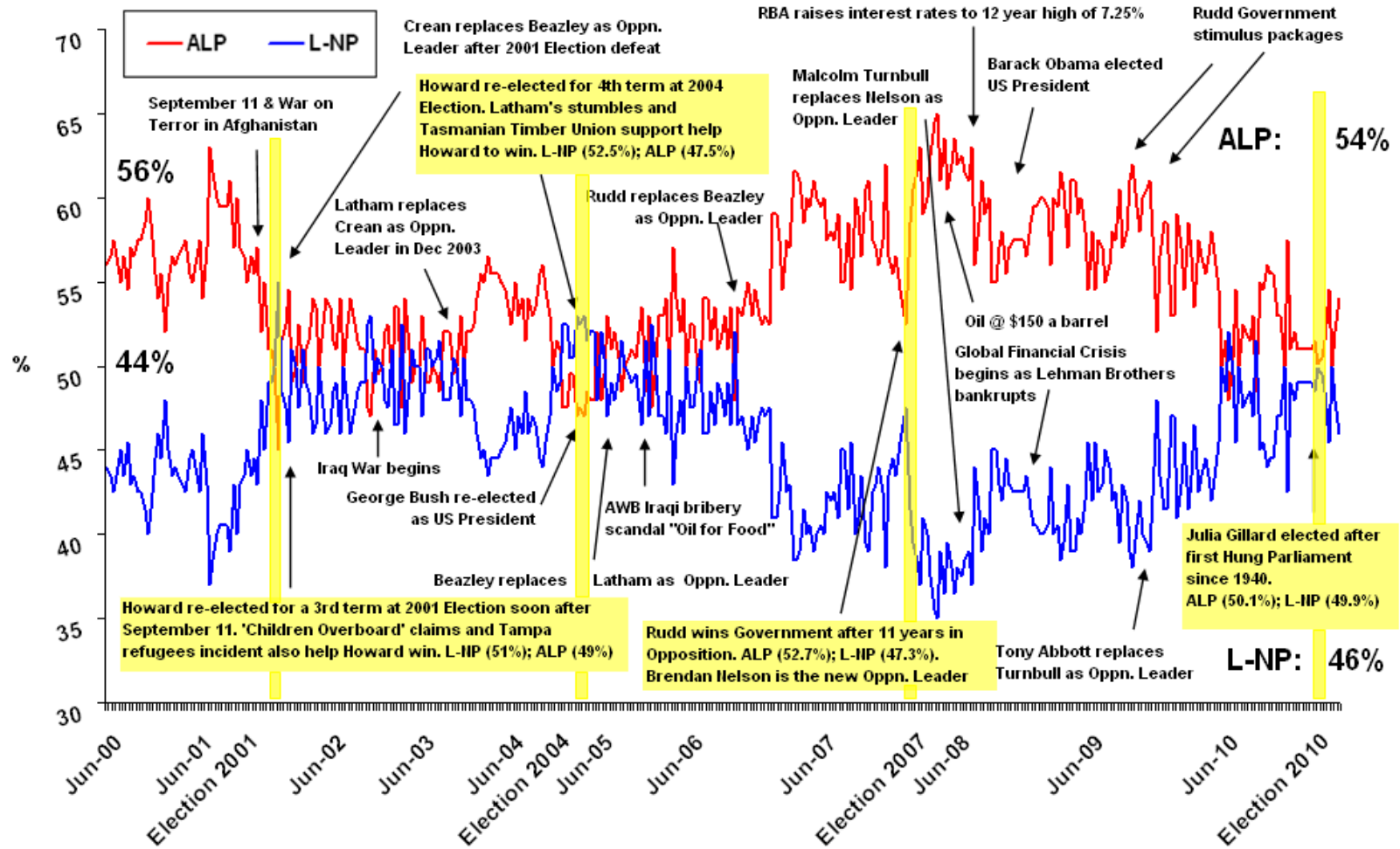
% of Workforce Unemployment – Roy Morgan / ABS Monthly Average



Base: Roy Morgan Research Aust. Population 14+; ABS. Monthly data.

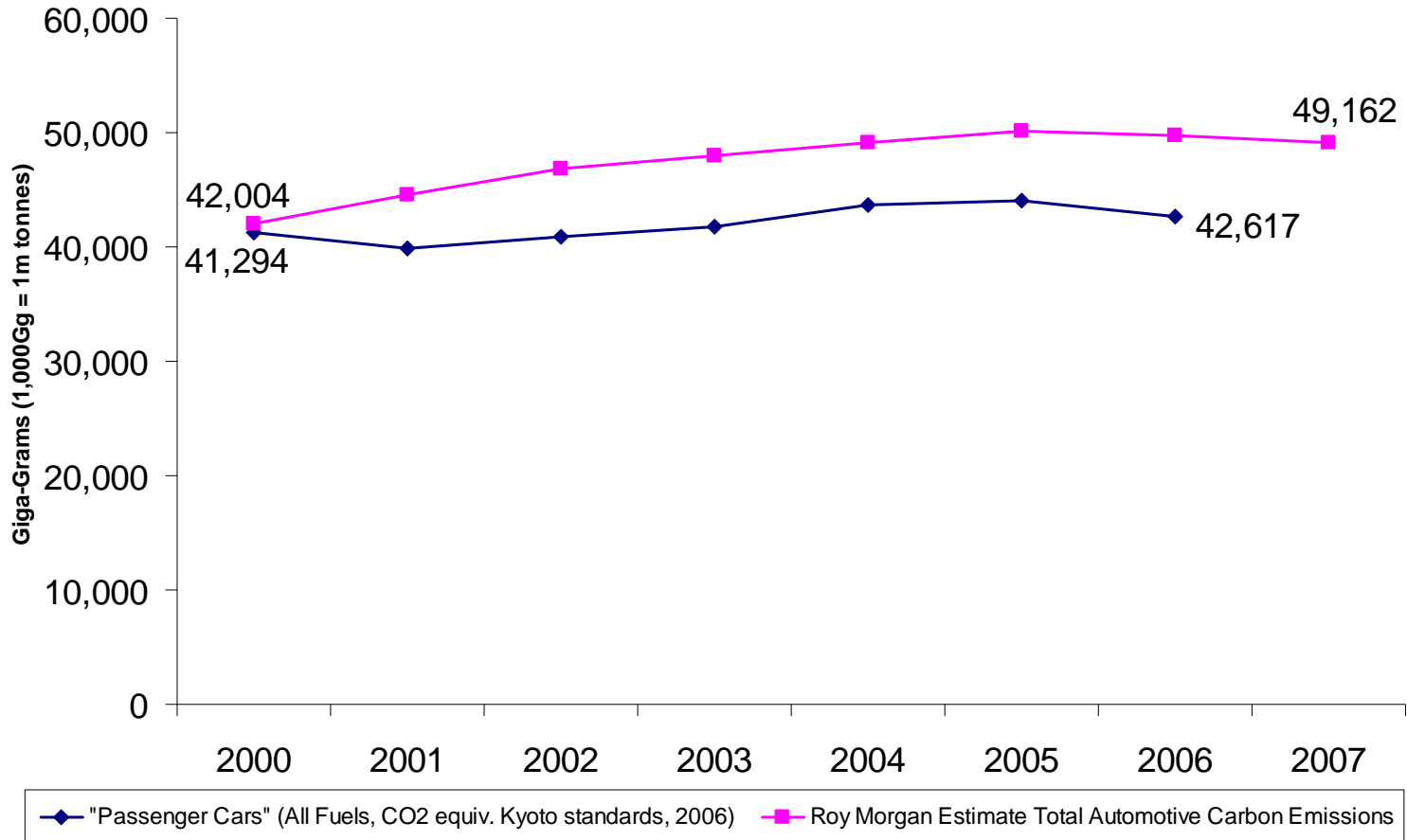
POLITICS

Federal: Two-Party Preferred



Base: Electors; Source: Roy Morgan Research

Comparison to Kyoto Emissions Figures



Base: Australian Drivers aged 18+
Source: Roy Morgan Research (AUTO)

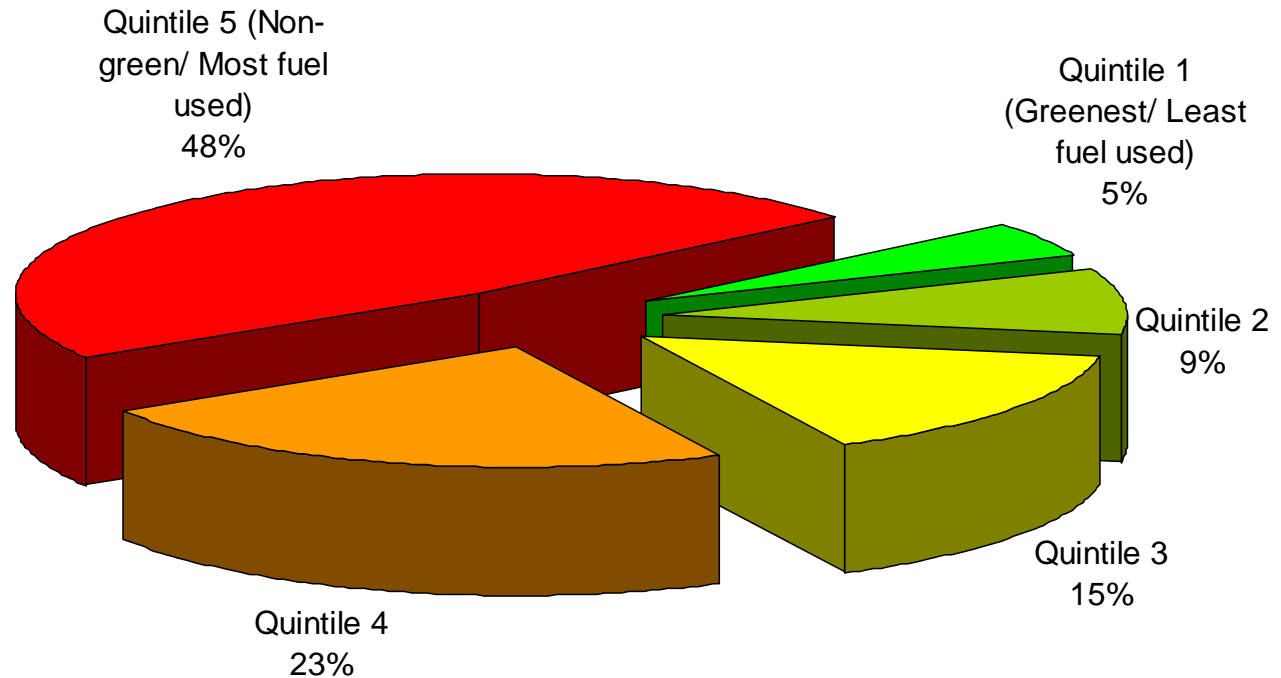
Breakdown of Automotive Carbon Emissions By VFACTS Categories

	% Share of Drivers (18+)	% Share of Auto Carbon Emissions	Per Capita Carbon Emissions	Auto Carbon Emissions in 12 months to March, 2008
Total Light	10%	6%	2,334	2,992,086
Total Small	24%	17%	2,866	8,500,151
Total Medium	15%	13%	3,496	6,623,366
Total Large	30%	39%	5,138	19,056,056
Total Upper Large	1%	2%	5,052	846,036
Total People Movers	2%	2%	4,625	1,202,079
Total Sports	1%	1%	2,938	336,483
Total SUV	15%	20%	5,266	9,896,032
Total Drivers (18+)	100%	100%	4030*	49,452,287

Base: Australian Drivers aged 18+, 12 months to March 2008
Source: Roy Morgan Research (AUTO)

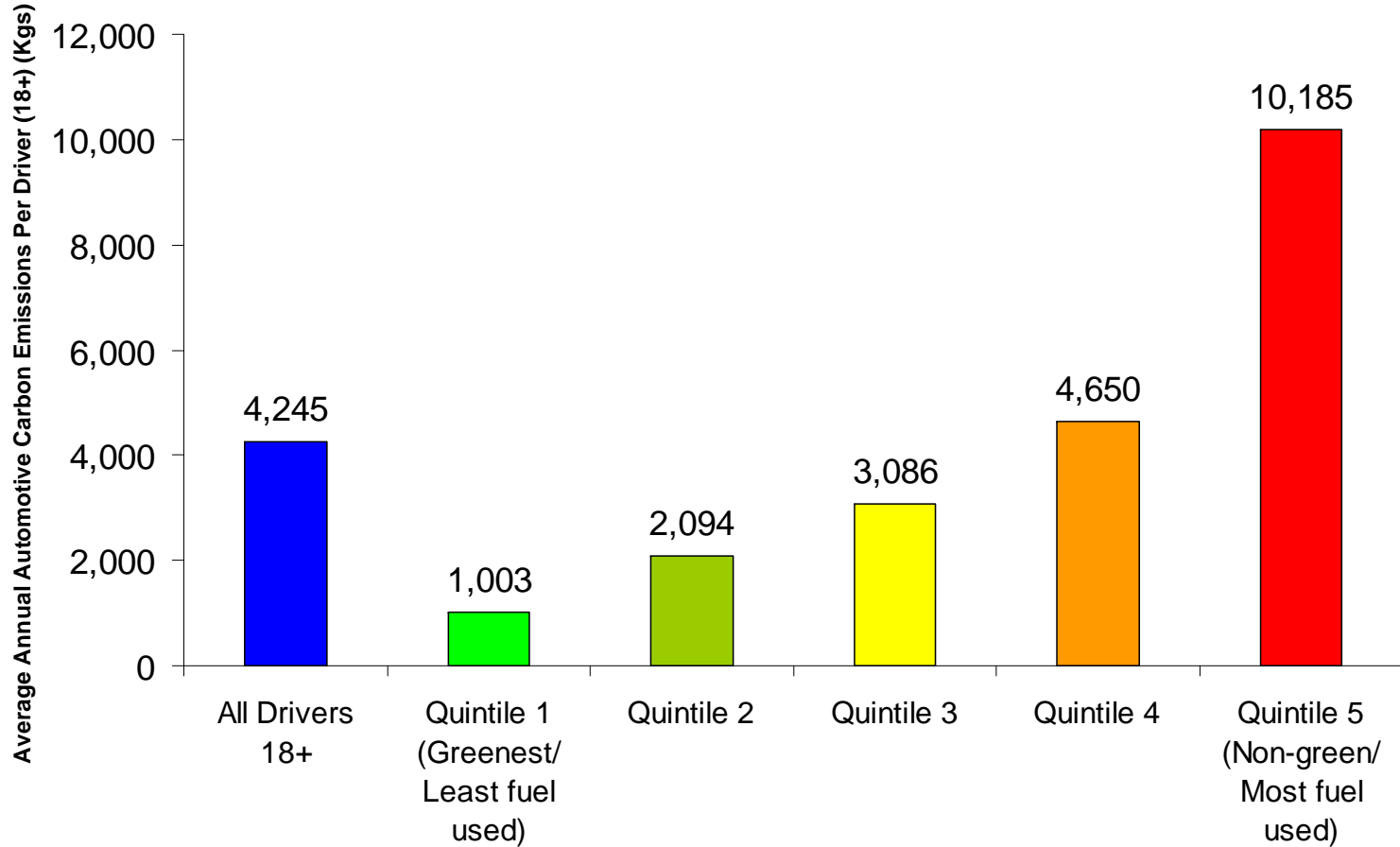
* This average excludes values for "Light Commercial" vehicles used elsewhere in this report.

Share of Personal Automotive Carbon Dioxide Emissions By Population Quintile



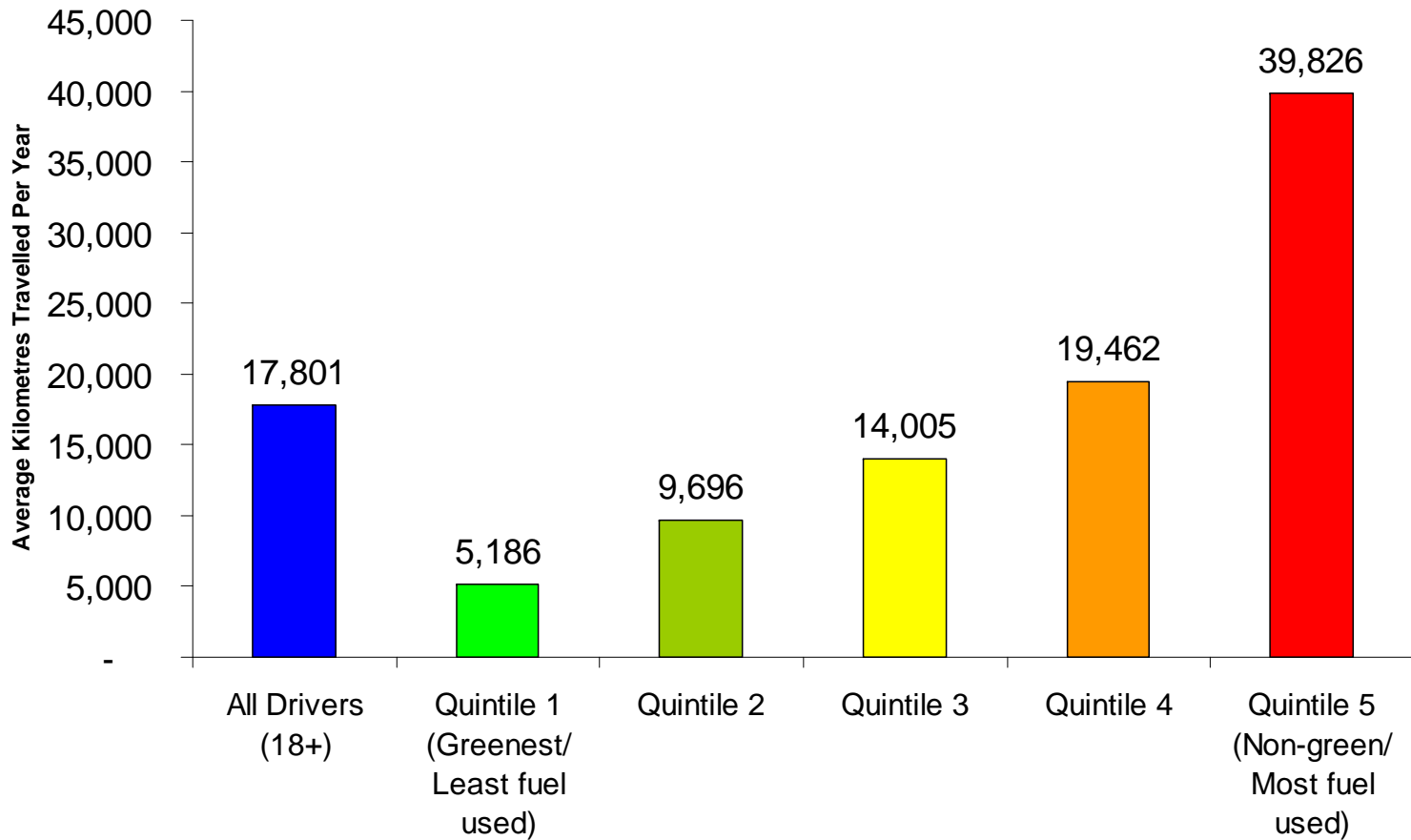
Base: Australian Drivers aged 18+, 12 months to March 2008
Source: Roy Morgan Research (AUTO)

Mean Automotive Carbon Emissions Footprint By Quintile



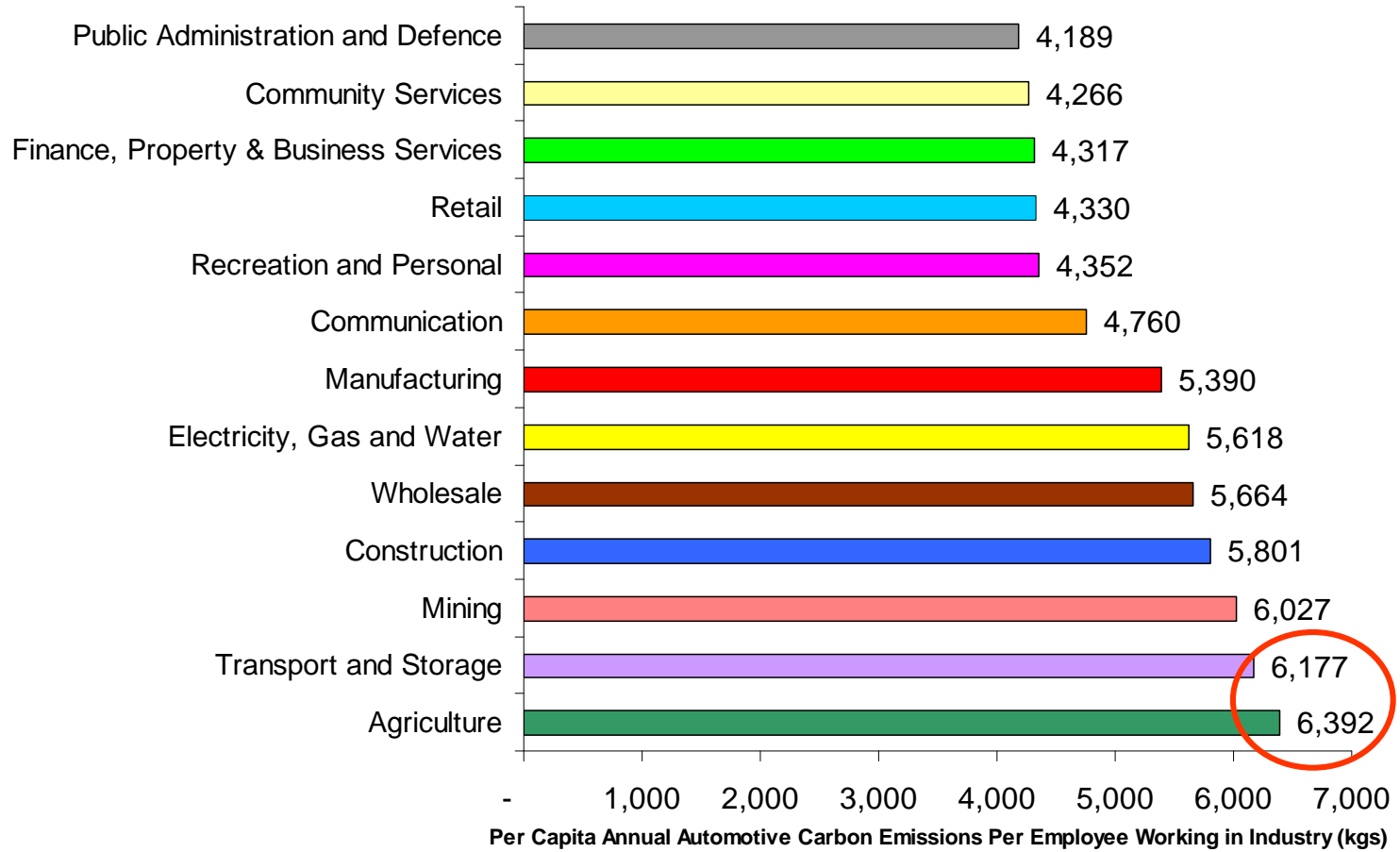
Base: Australian Drivers aged 18+, 12 months to March 2008
Source: Roy Morgan Research (AUTO)

Average Annual KMs Travelled By Carbon Emissions Quintile



Base: Australian Drivers aged 18+, 12 months to March 2008
Source: Roy Morgan Research (AUTO)

Per Capital Automotive Carbon Emissions By Industry of Employment



Base: Australian Employed Drivers aged 18+, 12 months to March 2008
Source: Roy Morgan Research (AUTO)

Highest 10 Federal Electorates By Mean Carbon Emissions Per Driver

Rank	Electorate	Mean Auto Carbon Emissions (kgs)	State	Description
1	McEwen (LNP)	6,610	Vic	Country & Outer North of Melbourne.
2	Gippsland (LNP)	6,256	Vic	Eastern Country Victoria.
3	Dawson (LNP)	6,028	Qld	North costal (Proserpine)
4	Corio (ALP)	5,702	Vic	Western Port Phillip Bay (Geelong)
5	McMillan (LNP)	5,600	Vic	Western Gippsland (Pakenham)
6	Flinders (LNP)	5,596	Vic	SE Port Phillip Bay, Western Port Bay
7	Holt (ALP)	5,548	Vic	Outer SE of Melbourne (Narre Warren, Cranbourne)
8	Canning (LNP)	5,547	WA	SE of Perth, outer Freemantle
9	O'Connor (LNP)	5,539	WA	Regional WA, surrounding Perth.
10	Macarthur (LNP)	5,481	NSW	South Western Sydney suburbs.

Base: Australian Drivers aged 18+, 12 months to March 2008
Source: Roy Morgan Research (AUTO)

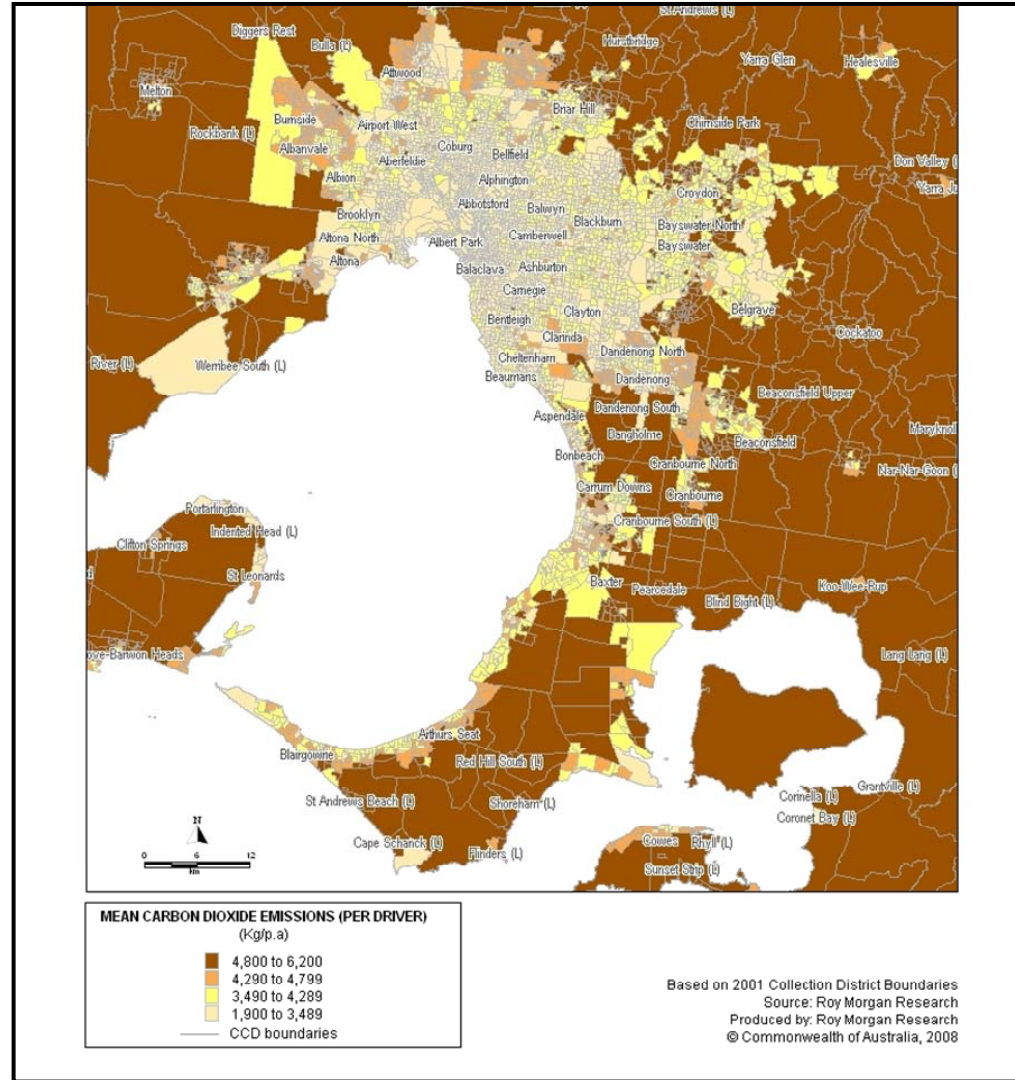
Lowest 10 Federal Electorates By Mean Carbon Emissions Per Driver

Rank	Electorate	Mean Auto Carbon Emissions (kgs)	State	Description
1	Sydney (ALP)	1,715	NSW	City centre.
2	Wentworth (LNP)	1,944	NSW	Inner city Sydney.
3	Melbourne (ALP)	2,401	Vic	City centre.
4	North Sydney (LNP)	2,437	NSW	Inner city Sydney.
5	Warringah (LNP)	2,510	NSW	Inner northern Sydney.
6	Lowe (ALP)	2,562	NSW	Inner city Sydney.
7	Higgins (LNP)	2,702	Vic	Inner south eastern Melbourne.
8	Denison (ALP)	2,737	Tas	City Centre.
9	Hindmarsh (ALP)	2,909	SA	Western central Adelaide.
10	Bradfield (LNP)	2,914	NSW	Inner northern Sydney.

Base: Australian Drivers aged 18+, 12 months to March 2008
Source: Roy Morgan Research (AUTO)

Melbourne, Victoria

Discover your edge



ELECTION 2010 THE POST-MORTEM

	2007 %	2010 %	change %
<i>Of those enrolled</i>			
VOTED LABOR	39.5	33.4	-6.1
VOTED COALITION	38.3	38.4	+0.1
VOTED GREEN	7.1	10.4	+3.3
VOTED OTHERS	6.1	5.8	-0.3
VOTED INFORMAL	3.7	5.2	+1.5
DID NOT VOTE	5.2	6.8	+1.6
NO FORMAL VOTE	9.0	12.0	+3.0

State of the Nation After the Federal Election

By Michele Levine, Gary Morgan & Julian McCrann

Presented at Marcus Oldham College

by

Michele Levine

CEO Roy Morgan Research

September 22, 2010

